

**The INSTITUTE for**  
**Public Policy & Economic Development**



**THE RISE OF LACKAWANNA  
COUNTY:  
AN EXAMINATION OF THE ORIGIN AND  
FUTURE EFFECTS OF RECENT POPULATION SHIFTS**

**2007 Updates**

**FEBRUARY 2009  
THE INSTITUTE FOR PUBLIC POLICY & ECONOMIC DEVELOPMENT**

The **INSTITUTE** for  

---

Public Policy & Economic Development

---

7 South Main Street, Suite 201 Wilkes-Barre, Pennsylvania 18701  
t: 570.408.9850 f: 570.408.9854

120 Wyoming Avenue, Third Floor, Scranton, PA 18503  
t: 570.207.0340 f: 570.408.9854

[info@institutepea.org](mailto:info@institutepea.org)  
[www.institutepea.org](http://www.institutepea.org)

**Staff**

**Teri Ooms**  
Executive Director

**Sherry Tracewski**  
Research and Policy Analyst

**Marla Doddo**  
Administrative and Outreach  
Coordinator

Copyright © 2009 The Institute for Public Policy & Economic Development. All Rights Reserved. No part of this publication may be copied or reproduced in any form or by any means without permission in writing from The Institute.

## **The Institute for Public Policy & Economic Development**

The Institute for Public Policy & Economic Development (formerly Joint Urban Studies Center) was established to provide essential research, analysis, and consultation to small and mid-size cities aiming for full participation in the new economy of the 21<sup>st</sup> century. The Institute mobilizes the resources of regional institutions of higher education to engage communities in planning that is informed by research, energized by broad participation from stakeholders in the community, and validated by successful implementation. As the managing partner in the Center, Wilkes University is joined by Keystone College, King's College, Marywood University, Misericordia University, Luzerne County Community College, Penn State Wilkes-Barre, and the University of Scranton.

## **Note**

The views expressed here do not necessarily reflect those of the educational partners, their offices, trustees or board members, or private businesses that fund The Institute or the staff of The Institute.

## **Acknowledgements**

We would like to acknowledge The Institute for its time, effort, and commitment to this region:

William P. Montague  
Founder  
*Mark IV Industries*

Jim DePolo  
*Covington Forge Ltd.*

Anne Munley., IHM, Ph.D.  
*Marywood University*

Tim Gilmour, Ph.D., Chairman  
*Wilkes University*

Christopher Haran  
*Great Valley Technology Alliance*

Thomas J. O'Hara, C.S.C., Ph.D.  
*King's College*

William B. Sordoni, Vice-Chairman  
*Sordoni Construction Company*

William Host  
*Wyoming Valley Health Care Systems*

Scott Pilarz, S.J.  
*University of Scranton*

Thomas Baldino, Ph.D.  
Chairman Academic Council  
*Wilkes University*

Charles Kasko  
*Custom Signature Homes*

Russell Roberts  
*Bohlin Cywinski Jackson*

Thomas E. Lawson  
*Borton Lawson*

Thomas Romanowski  
*GreenSpace Properties LLC*

Rich Beasley  
*PPL Electric*

Thomas Leary, Ph.D.  
*Luzerne County Community College*

Eugene Roth  
*Rosenn, Jenkins, and Greenwald*

Edward Boehm, Ph.D.  
*Keystone College*

David Lee  
*United Way of Wyoming Valley*

Connie Schintz  
*Geisinger Health Systems*

Terry Casey  
*M&T Bank*

Michael MacDowell, Ph.D.  
*Misericordia University*

Susan W. Shoval  
*GUARD Insurance Group*

John Cefaly  
*Cushman & Wakefield*

Melanie Maslow Lumia  
*Maslow Lumia Bartorillo Advertising*

Todd Vonderheid  
*Greater Wilkes-Barre Chamber of  
Business & Industry*

Charles Davis, Ph.D.  
*Penn State Wilkes-Barre*

## Table of Contents

I. Introduction .....	4
II. In and Out Migration Update .....	4
III. Out Migration Update .....	5
IV. Understanding the Source Update .....	6
V. Breaking Down the Source Update.....	8
VI. Net Migration Update .....	9
VII. County Rankings Update.....	9
VIII. Conclusion .....	10

## I. Introduction

Since The Institute for Public Policy & Economic Development (the “Institute”) last examined Lackawanna County’s population shift in our report *The Rise of Lackawanna County*, more migration data from the Internal Revenue Service (IRS) has become available. New data now includes the years 2006-2007, and, as a result of this additional information, a brief update to the report is now warranted. This report demonstrates Lackawanna County’s 2006-2007 population changes.

## II. In and Out Migration Update

The total in-migration for Lackawanna County in 2006-2007 was 5,557, an increase of .47 percent from the 2005-2006 time period. The total out-migration in 2006-2007 was 5,178. This was a .06 percent change. In the specified time period there was a net gain of 379 migrants.

Lackawanna County Migration 2006-2007		
In	Out	Net
5,557	5,178	379

The table below provides in-migration data for the years 1990 through 2007. The previous report included data for the years 1990 to 2006 only.

Lackawanna County In-Migration 1990-2007			
Rank	Location	Total	%
1	Pennsylvania	41,268	76.4%
2	New York	5,662	10.5%
3	New Jersey	4,005	7.4%
4	Foreign	1,219	2.3%
5	Florida	752	1.4%
6	California	306	0.6%
7	Connecticut	189	0.3%
8	Arizona	175	0.3%
9	Virginia	139	0.3%
10	Maryland	123	0.2%
11	Delaware	48	0.1%
12	Rhode Island	34	0.1%
13	Kansas	26	0.0%
14	Massachusetts	22	0.0%
15	Nevada	21	0.0%
16	Illinois	20	0.0%
17	North Carolina	15	0.0%

Several population changes have occurred since 2006 and 2007 data became available. First, Lackawanna County's percentage of in-migration from other Pennsylvania counties decreased from 77.0% to 76.4%. The percentage of migrants to Lackawanna County from the state of New York increased from 10.3% to 10.5%. The last major change was the appearance of the state of Massachusetts within the table, which contributed its first migrants to Lackawanna County during the 2006 to 2007 period.

### III. Out Migration Update

The table below, which includes the most recent data available, provides an update to a table included in the Institute's prior report.

<b>Lackawanna County Out-Migration 1990 to 2007</b>			
<b>Rank</b>	<b>State</b>	<b>Total</b>	<b>%</b>
1	Pennsylvania	45,076	81.1%
2	Florida	2,667	4.8%
3	New York	2,317	4.2%
4	New Jersey	1,598	2.9%
5	Maryland	713	1.3%
6	California	571	1.0%
7	Arizona	553	1.0%
8	Virginia	494	0.9%
9	North Carolina	258	0.5%
10	Nevada	251	0.5%
11	Delaware	222	0.4%
12	Connecticut	260	0.5%
13	Massachusetts	187	0.3%
14	Illinois	177	0.3%
15	DC	109	0.2%
16	Ohio	33	0.1%
17	Hawaii	26	0.0%
18	Utah	22	0.0%
19	Rhode Island	22	0.0%
20	South Carolina	20	0.0%
21	Texas	16	0.0%

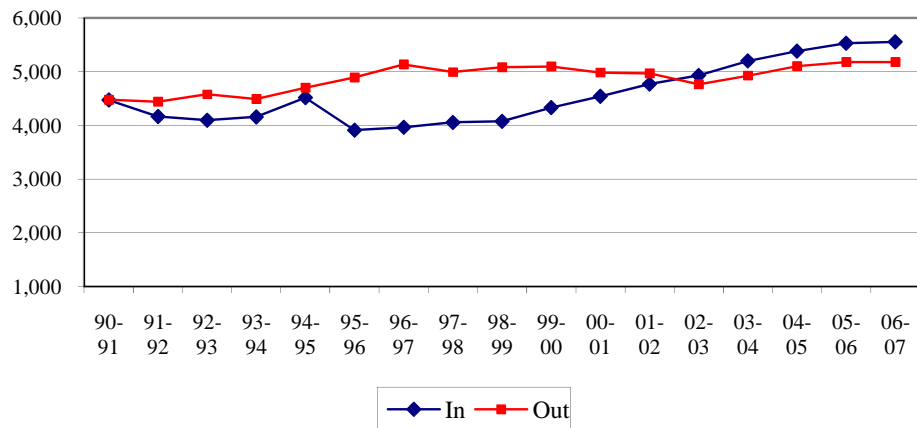
For the 2006 to 2007 period, .1% fewer Lackawanna County residents moved to counties within Pennsylvania or the state of Florida. The county's out-migrants to both the states of New York and New Jersey increased from 4.0% to 4.2%

The table below examines the migration patterns beginning in 2002. There was a positive net migration each year. From 2002 to the present, Lackawanna County gained an additional 1,454 residents.

Lackawanna County Migration Data: 2002-2007			
	In	Out	Net
2002-2003	4,932	4,768	164
2003-2004	5,203	4,927	276
2004-2005	5,383	5,104	279
2005-2006	5,531	5,175	356
2006-2007	5,557	5,178	379
<b>Total</b>	<b>26,606</b>	<b>25,152</b>	<b>1,454</b>

The chart on the next page illustrates Lackawanna County's in-migration vs. out-migration trends from 1990 through 2007.

**In-Migration vs. Out Migration Data:  
Lackawanna County**

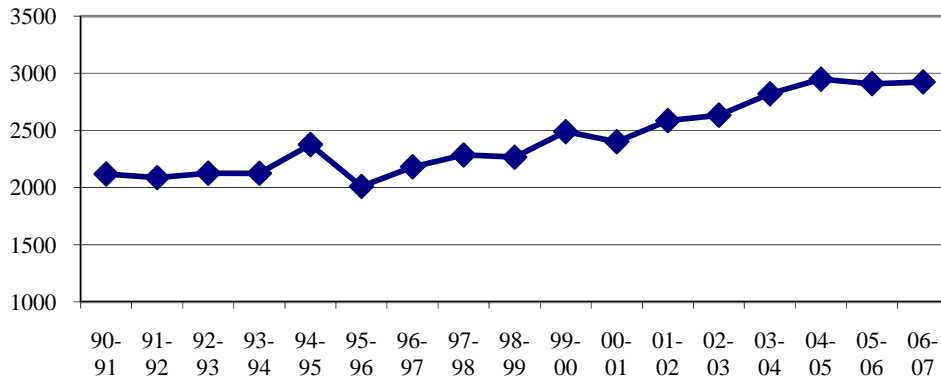


#### IV. Understanding the Source Update

The charts below have been updated to include the 2006 and 2007 migration data in order to better demonstrate each state's current migration patterns.

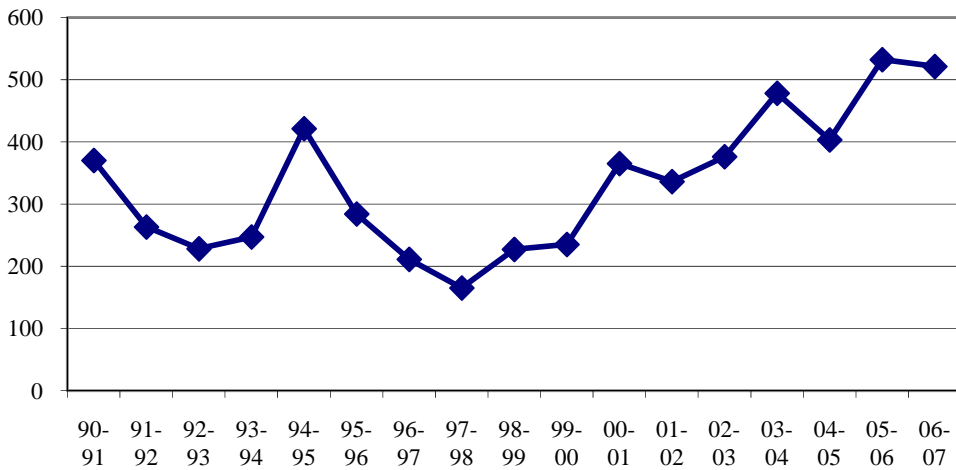
In-migration from Pennsylvania counties increased from 2,909 in the 2005-2006 period to 2,924 in the 2006-2007 period.

**Lackawanna County In-Migration:  
Pennsylvania Counties**



In-migration from New York counties decreased from 532 in the 2005-2006 period to 521 in the 2006-2007 period.

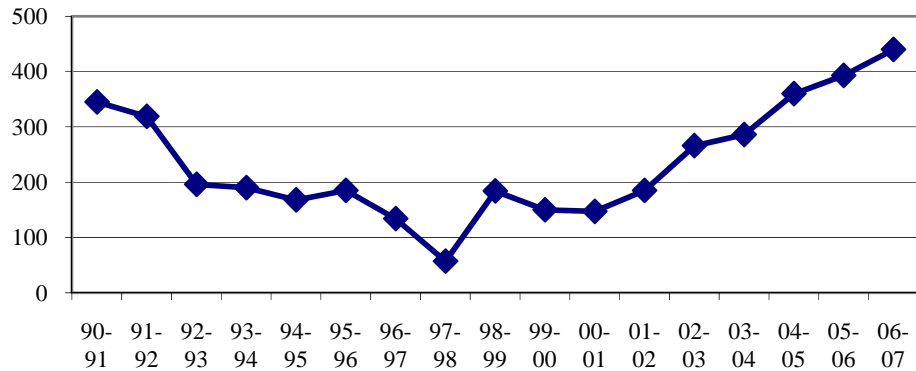
**Lackawanna County In-Migration:  
New York**



In-migration for New Jersey counties increased from 393 in the 2005-2006 period to 440 in the 2006-2007 period.



### Lackawanna County In-Migration: New Jersey



## V. Breaking Down the Source Update

In this section, two county rank changes are notable. The first change occurred in the state of New York, where Nassau and New York Counties switched place in overall ranking for all years examined. From 1990 to 2006, Nassau County’s in-migration was 439, while New York County’s was 427. An increase in migrants from New York County to Lackawanna County in the 2006-2007 period resulted in a change in overall rank from 1990 to 2007.

<b>Lackawanna County In-Migration: New York Counties</b>					
1990 to 2007			2000 to 2007		
Rank	County	Total	Rank	County	Total
1	Kings	887	1	Kings	504
2	Broome	838	2	Queens	429
3	Queens	783	3	Bronx	378
4	Suffolk	700	4	Broome	345
5	New York	479	5	New York	270
6	Nassau	474	6	Suffolk	249
7	Bronx	422	7	Orange	245
8	Orange	366	8	Nassau	164
9	Richmond	142	9	Richmond	116
10	West Chester	165	10	West Chester	110

The second change occurred with New Jersey counties. Previously, for the 2000 to 2006 period, Burlington County’s 100 migrants to Lackawanna County outranked Ocean County’s 91. During the 2000 to 2007 period, these counties also swapped rankings due to a sharp drop in migrants (to zero) from Burlington County between 2006 and 2007.

Lackawanna County In-Migration: NJ Counties					
1990 to 2007			2000 to 2007		
Rank	County	Total	Rank	County	Total
1	Middlesex	577	1	Middlesex	280
2	Morris	494	2	Hudson	262
3	Essex	547	3	Bergen	239
4	Bergen	509	4	Passaic	252
5	Hudson	432	5	Essex	260
6	Passaic	423	6	Morris	165
7	Union	319	7	Union	158
8	Ocean	165	8	Ocean	118
9	Burlington	131	9	Burlington	100
10	Monmouth	135	10	Sussex	97

## VI. Net Migration Update

Major net migration changes occurred from 1990 to 2006, and from 1990 to 2007 within Pennsylvania's Bucks County. From 1990 to 2006, Bucks County had a positive net migration of 2; after the 2006-2007 data became available, Bucks County's net migration dropped to -22. No major net migration changes occurred within the states of New York or New Jersey.

Lackawanna County Net Migration: 1990-2007 Pennsylvania Counties			
County	In Migration	Out Migration	Net
Luzerne	10,080	11,666	-1,586
Wayne	7,304	6,588	716
Wyoming	4,329	5,114	-785
Susquehanna	4,044	4,700	-656
Monroe	2,990	1,908	1,082
Pike	1,186	942	244
Philadelphia	1,122	1,422	-300
Montgomery	1,028	1,469	-441
Lehigh	781	1,120	-339
Bucks	744	766	-22

## VII. County Rankings Update

Several changes in county rankings pertaining to in-migrants contributed to Lackawanna County are included in the revised table below. From 1990 to 2006, Pennsylvania's Lehigh and Bucks Counties ranked 11<sup>th</sup> and 12<sup>th</sup>, while New York's Queens County ranked 13<sup>th</sup>. With the new 2006-2007 data, Queens County moved up to rank 11<sup>th</sup>, Morris County dropped in rank from 17<sup>th</sup> to 20<sup>th</sup>, and Essex County moved up in rank

from 19<sup>th</sup> to 17<sup>th</sup>. Other changes for more recent periods (2000 to 2006 and 2000 to 2007) include a drop in rank from 7<sup>th</sup> to 8<sup>th</sup> for Kings County, an increase in rank from 10<sup>th</sup> to 9<sup>th</sup> for Queens County, a drop in rank from 9<sup>th</sup> to 10<sup>th</sup> for Montgomery County, a drop in rank from 11<sup>th</sup> to 12<sup>th</sup> for Bronx County, and Dauphin County's major drop from 18<sup>th</sup> to 23<sup>rd</sup>.

<b>Lackawanna County In-Migration</b>											
<b>1990 to 2006</b>			<b>2000 to 2006</b>			<b>1990 to 2007</b>			<b>2000 to 2007</b>		
<b>Rank</b>	<b>County</b>	<b>Total</b>	<b>Rank</b>	<b>County</b>	<b>Total</b>	<b>Rank</b>	<b>County</b>	<b>Total</b>	<b>Rank</b>	<b>County</b>	<b>Total</b>
1	Luzerne	9,363	1	Luzerne	3,809	1	Luzerne	10,080	1	Luzerne	4,526
2	Wayne	6,762	2	Wayne	2,890	2	Wayne	7,304	2	Wayne	3,522
3	Wyoming	4,063	3	Susquehanna	1,649	3	Wyoming	4,329	4	Wyoming	1,886
4	Susquehanna	3,807	4	Wyoming	1,588	4	Susquehanna	4,044	3	Susquehanna	1,854
5	Monroe	2,686	5	Monroe	1,401	5	Monroe	2,990	5	Monroe	1,705
6	Pike	1,071	6	Pike	566	6	Pike	1,186	6	Pike	681
7	Philadelphia	1,027	7	Kings	435	7	Philadelphia	1,122	7	Philadelphia	515
8	Montgomery	970	8	Philadelphia	420	8	Montgomery	1,028	8	Kings	504
9	Kings	818	9	Montgomery	366	9	Kings	887	9	Queens	429
10	Broome	780	10	Queens	347	10	Broome	838	10	Montgomery	424
11	Lehigh	744	11	Lehigh	316	11	Queens	783	11	Bronx	378
12	Bucks	705	12	Bronx	296	12	Lehigh	781	12	Lehigh	353
13	Queens	701	13	Broome	287	13	Bucks	744	13	Broome	345
14	Suffolk	666	14	Bucks	251	14	Suffolk	700	14	Northampton	291
15	Northampton	532	15	Northampton	245	15	Northampton	578	15	Bucks	290
16	Middlesex	505	16	New York	218	16	Middlesex	577	16	Middlesex	280
17	Morris	494	17	Suffolk	215	17	Essex	547	17	New York	270
18	Dauphin	484	18	Daupin	211	18	Bergen	509	18	Hudson	262
19	Essex	481	19	Middlesex	208	19	Dauphin	503	19	Essex	260
20	Bergen	467	20	Hudson	198	20	Morris	494	20	Passaic	252
21	Nassau	439	21	Bergen	197	21	New York	479	21	Suffolk	249
22	New York	427	22	Passaic	197	22	Nassau	474	22	Bergen	239
23	Hudson	368	23	Essex	194	23	Hudson	432	23	Daupin	230

## VIII. Conclusion

In conclusion, it's obvious that migration patterns change over the course of a year. For the 2000 to 2007 period, more than half of the counties included in the rankings changed place due to migration pattern fluctuations between 2006 and 2007. As previously discussed, the state of Massachusetts contributed its first migrants to Lackawanna County between 2006 and 2007; this may be the beginning of a trend that lasts for years.

The **INSTITUTE** for  

---

Public Policy & Economic Development

7 South Main Street, Suite 201, Wilkes-Barre, Pennsylvania 18701  
t: 570-408-9850 f: 570-408-9854

120 Wyoming Avenue, Third Floor, Wilkes-Barre, PA 18701  
t: 570207.0340 f:570.408.9854

[info@institutepea.org](mailto:info@institutepea.org)  
[www.institutepea.org](http://www.institutepea.org)

**THE INSTITUTE FOR PUBLIC POLICY & ECONOMIC DEVELOPMENT  
FEBRUARY2009**