

County Business Patterns

1998-2007 Lackawanna & Luzerne Counties

February 2010

The Institute for Public Policy & Economic Development

The **INSTITUTE** for

Public Policy & Economic Development

*A partnership among Keystone College, King's College, Luzerne County Community College,
Marywood University, Misericordia University, Penn State Wilkes-Barre, The Commonwealth Medical College,
University of Scranton, & Wilkes University*

Table of Contents

Executive Summary..... 4

 Luzerne..... 4

 Lackawanna..... 6

 Pennsylvania 7

Research Methodology 10

1998 BUSINESS PATTERNS 12

 Luzerne County 12

 Lackawanna County 14

 Pennsylvania 16

1999 BUSINESS PATTERNS 18

 Luzerne County 18

 Lackawanna County 20

 Pennsylvania 22

2000 BUSINESS PATTERNS 24

 Luzerne County 24

 Lackawanna County 26

 Pennsylvania 28

2001 BUSINESS PATTERNS 30

 Luzerne County 30

 Lackawanna County 32

 Pennsylvania 34

2002 BUSINESS PATTERNS 36

 Luzerne County 36

 Lackawanna County 38

 Pennsylvania 40

2003 BUSINESS PATTERNS 42

 Luzerne County 42

 Lackawanna County 44

 Pennsylvania 46

2004 BUSINESS PATTERNS 48

Luzerne County	48
Lackawanna County	50
Pennsylvania	52
2005 BUSINESS PATTERNS	54
Luzerne County	54
Lackawanna County	56
Pennsylvania	58
2006 BUSINESS PATTERNS	60
Luzerne County	60
Lackawanna County	62
Pennsylvania	64
2007 BUSINESS PATTERNS	66
Luzerne County	66
Lackawanna County	68
Pennsylvania	70
COMPARITIVE ANALYSIS	71
CONCLUSION	76
Luzerne.....	76
Lackawanna.....	77
Pennsylvania	78

Principal Researchers:

Sherry Tracewski

Teri Ooms

Associate Researchers:

Kate Conte

Project Coordinator:

Marla Doddo

©All Rights Reserved. The Institute for Public Policy & Economic Development

Executive Summary

The data gathered in this report from the U.S. Census Bureau provides an historical context and trends in county business patterns. This can be used for future planning by studying various industries sectors, and their patterns of growth and decline over the past ten years. The demographics of the business world have changed fairly quickly over this period, as we have seen many large industries sectors grow (Health Care and Social Assistance) and some slightly decline (Manufacturing). Business patterns in Lackawanna and Luzerne Counties, as well as in the Commonwealth of Pennsylvania as a whole, have been annually reviewed in depth. This study combines other studies and adds additional years of data to provide a long term analysis. The data is presented below and is followed by a comparative analysis.

Luzerne

Luzerne County Business Patterns 1998-2007						
Year	Number of Employees	Change	Annual Payroll	Change	Total Estb.	Change
1998	122,507	-	\$2,922,120,000	-	7,636	-
1999	122,554	47	\$2,998,186,000	\$76,066,000	7,606	-30
2000	127,328	4,774	\$3,203,758,000	\$205,572,000	7,661	55
2001	127,970	642	\$3,286,880,000	\$83,122,000	7,580	-81
2002	124,838	-3,132	\$3,348,498,000	\$61,618,000	7,634	54
2003	123,599	-1,239	\$3,502,182,000	\$153,684,000	7,599	-35
2004	125,682	2,083	\$3,605,352,000	\$103,170,000	7,711	112
2005	125,643	-39	\$3,663,914,000	\$58,562,000	7,790	79
2006	129,972	4,329	\$3,841,074,000	\$177,160,000	7,684	-106
2007	128,627	-1,345	\$4,211,296,000	\$370,222,000	7,705	21
Total Change		6,120		\$1,289,176,000		69
Percent Change		5.00%		44.12%		0.90%

Over the past ten years, Luzerne County's business patterns have slowly changed. During the time frame, the number of employees grew from 122,507 to 128,627 – an increase of 6,120 people. The biggest one-year growth spurts appeared from 1999-2000 and 2005-2006, when increases of 4,300 employees over the prior year were recorded.

Luzerne County's annual payroll grew consistently throughout the ten-year-period – increasing from just over \$2.9 billion in 1998 to more than \$4.2 billion in 2007 – which marks growth of nearly \$1.3 billion. Likewise, it is helpful to consider the county's the ratio of annual payroll to number of employees. When calculated, in 1998, all of Luzerne County's industries averaged an annual payroll of \$23,852 per employee. Ten years later, that grew to \$32,740 per employee. While the number of employees only grew 5% over the ten-year-period, annual payroll grew 44.12%.

The total business establishments in Luzerne County grew by 69 over the timeframe; the greatest increase occurred from 2003-2004, when there was a 112 business establishment increase. The greatest drop in business establishments occurred from 2005-2006, when the number of establishments declined by 106. During the period from

1998-2007, the county's top three industries with the greatest number of establishments accounted for about 41% of all of the county's business establishments. It is also noteworthy that over the ten years examined, approximately 94% of county's the total establishments employed fewer than 50 people. Clearly there are many smaller than large business establishments.

The Manufacturing industry dominated the category of most employees for the first four years of the time period examined. From 2002-2007, Health Care and Social Assistance moved into and remained in the top spot. The Retail Trade industry ranked third in this category until 2004, when it surpassed the Manufacturing industry. The ranking of the top three industries in terms of annual payroll remained the same from 1998-2006, with Manufacturing in the top spot, followed by Health Care and Social Assistance and then Retail Trade. In 2007, however, Health Care and Social Assistance moved into the top spot.

Luzerne County's top three industries with the greatest number of establishments stayed the same over the period examined. The Retail Trade industry ranked first for the most number of business establishments, followed by Health Care and Social Assistance and Other Services (except Public Administration), which alternated between second and third place in this category.

Over the period examined, Luzerne County increased its number of employees by 6,120, its annual payroll by over \$1.2 billion, and its total establishments by 69. Seven of the county's industries experienced large increases in the number of establishments with over 1,000 employees. The greatest employment increase occurred in the Health Care and Social Assistance industry (2,412). Just six industries experienced a drop in their number of employees, but none experienced decreases as great as the Manufacturing industry, which lost 4,800 workers over ten years.

Four Luzerne County industries significantly increased annual payroll by more than \$100 million over the period examined, including Utilities, Retail Trade, Transportation and Warehousing, and Health Care and Social Assistance. The Utilities industry's average annual payroll per employee grew from \$40,922 to \$85,841 – the greatest increase in average annual payroll.

Three industries experienced increases of more than 50 in total number of business establishments, including the Health Care and Social Assistance (09), Professional, Scientific and Technical Services (87) and Transportation and Warehousing (50). Similarly, three industries experienced decreases of more than 50 in their total number of while three experienced decreases of more than 50 in total number of business establishments, including Other Services (except public administration) (86), Retail Trade (110) and Construction (117).

Lackawanna

Lackawanna County Business Patterns 1998-2007						
Year	Number of Employees	Change	Annual Payroll	Change	Total Estb.	Change
1998	90,808	-	\$2,073,488,000	-	5,393	-
1999	89,771	-1,037	\$2,180,815,000	\$107,327,000	5,393	0
2000	93,383	3,612	\$2,356,781,000	\$175,966,000	5,422	29
2001	94,447	1,064	\$2,379,979,000	\$23,198,000	5,397	-25
2002	90,351	-4,096	\$2,358,481,000	-\$21,498,000	5,336	-61
2003	90,855	504	\$2,435,516,000	\$77,035,000	5,336	0
2004	95,887	5,032	\$2,677,704,000	\$242,188,000	5,440	104
2005	93,372	-2,515	\$2,679,681,000	\$1,977,000	5,452	12
2006	96,136	2,764	\$2,845,236,000	\$165,555,000	5,477	25
2007	97,959	1,823	\$2,963,459,000	\$118,223,000	5,554	77
Total Change		7,151		\$889,971,000		161
Percent Change		7.87%		42.92%		2.99%

Lackawanna County experienced similar trends. While the total number of employees increased by more than 7,000 over the ten-year-period. Lackawanna County experienced its greatest decrease in workforce from 2001-2002, when more than 4,000 people were jobless. This drop was offset just two years later, when the county experienced the greatest employment growth – when more than 5,000 people found work.

The county's annual payroll also increased by \$889,971,000 over the ten years. The greatest one-year increase came in 2003-2004, when the annual payroll increased \$242,188,000. As in Luzerne County, in 1998, Lackawanna County's annual payroll to employee ratio for all industries averaged \$22,833 per employee; ten years later, that grew to \$30,252. While the county's number of employees grew nearly 8% over the time period, its average annual payroll increased nearly 43%. As in Luzerne County, from 1998-2006 (the data was disclosed in 2007), the Utilities industry's average annual payroll per employee grew from \$35,376 to \$60,767 – a remarkable 71.77% increase over just nine years.

Lackawanna County witnessed a steady five year growth in business establishments from 2003-2007, with a total increase of 161 business establishments over the ten year span. Similar to Luzerne County, Lackawanna County's top three industries with the greatest number of establishments accounted for about 42% of all business establishments. Also like Luzerne County, about 94% of Lackawanna County's total business establishments employed fewer than 50 people. The top three industries based on number of business establishments remained the same for all ten years – Retail Trade, followed by Health Care and Social Assistance and Other Services (except Public Administration).

The Health Care and Social Assistance industry employed the greatest number of people over the ten years examined. Manufacturing ranked second for the first four years, and was outpaced by the Retail Trade industry, which held that spot from 2002-

2007. Manufacturing was also the county's top industry in annual payroll for the first four years, while Health Care and Social Assistance had the largest annual payroll for the final six years studied - from 2002-2007. The Retail Trade industry ranked third in nine of the ten years examined; in 2006 the Financial and Insurance industry outpaced Retail Trade and took the third place spot.

Overall, Lackawanna County increased its number of employees by 7,151, its annual payroll by over \$889 million, and its total establishments by 161 over the time period. Similar to Luzerne County, six industries increased their respective workforces by more than 1,000 people, and only one experienced a considerable drop in employment level (Manufacturing: -3,351 workers). Four industries increased their respective annual payrolls by more than \$87 million, three of which also increased their total number of business establishments by more than 50. The Health Care and Social Assistance industry experienced the greatest increases in annual payroll (\$2.45 million), while and the Professional, Scientific, and Technical Services industry added the most business establishments (101). The Finance and Insurance industry grew significantly in all three areas, while the Manufacturing industry performed the worst in both annual payroll and total number of business establishments, which dropped by \$29.5 million and 47 establishments, respectively.

Pennsylvania

Commonwealth of Pennsylvania Business Patterns 1998-2007						
Year	Number of Employees	Change	Annual Payroll	Change	Total Estb.	Change
1998	4,906,190	-	\$145,569,019,000	-	292,659	-
1999	4,986,591	80,401	\$154,388,369,000	\$8,819,350,000	293,491	832
2000	5,087,237	100,646	\$165,108,378,000	\$10,720,009,000	294,741	1,250
2001	5,123,111	35,874	\$169,850,265,000	\$4,741,887,000	295,096	355
2002	5,046,442	-76,669	\$169,236,446,000	-\$613,819,000	297,257	2,161
2003	5,029,324	-17,118	\$174,513,098,000	\$5,276,652,000	298,081	824
2004	5,107,044	77,720	\$181,784,478,000	\$7,271,380,000	301,557	3,476
2005	5,082,630	-24,414	\$189,692,284,000	\$7,907,806,000	303,333	1,776
2006	5,189,949	107,319	\$200,537,253,000	\$10,844,969,000	304,058	725
2007	5,195,818	5,869	\$208,045,992,000	\$7,508,739,000	305,345	1,287
Total Change		289,628		\$62,476,973,000		12,686
Percent Change		5.90%		42.92%		4.33%

The Commonwealth of Pennsylvania shared many similarities with Lackawanna and Luzerne Counties. The state's overall number of employees grew by 289,628 over the ten year span, with only three years of a declining workforce numbers from previous years. There were two years when workforce increases exceeded 100,000 workers (1999-2000 and 2005-2006).

Pennsylvania experienced a drastic increase in the annual payroll over the ten years studied, growing from over \$145 billion in 1998 to more than \$200 billion in 2007 – an increase of more than \$62 billion.

In 1998, the Commonwealth's overall annual payroll per employee ratio was \$29,670 per person; ten years later, that grew to \$40,041. The state's number of employees only grew 5.90% during the time span; however annual payroll increased nearly 43%.

Over the ten-year-period, Pennsylvania's total number of business establishments also grew from 292,659 to 305,345. Similar to Luzerne and Lackawanna Counties, the state's top three industries with the greatest number of business establishments accounted for about 39% of all business establishments; likewise, approximately 94% of all of Pennsylvania's business establishments employed fewer than 50 people.

The same industries that dominated the rankings in Luzerne and Lackawanna Counties also dominated statewide. The Manufacturing industry employed the greatest number workers for the first four years examined, while the Health Care and Social Assistance led during the last six years examined. Retail Trade ranked third for the first six years, and then exceeded Manufacturing in 2004. Similarly, the Manufacturing industry had the highest annual payroll from 1998-2003, followed by the Health Care and Social Assistance industry. The Health Care and Social Assistance industry moved into first place from 2004-2007. The Retail Trade industry did not rank among the top three for average annual payroll in any of the years examined. The Professional, Scientific, and Technical Services ranked in each of the ten years studied. Over the time period, the Management of Companies and Enterprises and Utilities industries' average annual payroll per employee grew by 69.7% and 62.1%, respectively. The Management of Companies and Enterprises industry increased its average annual payroll per employee from \$57,679 in 1998 to \$97,913 in 2007. Similarly, the Utilities industry's average annual payroll per employee grew from \$59,671 in 1998 to \$96,758 in 2007. The same top three industries dominated the establishments category over all ten years, and included Retail Trade, followed by Other Services (except Public Administration) and Health Care and Social Assistance.

The Commonwealth also increased its number of employees by 289,628 its annual payroll by more than \$62 billion, and its total number of establishments by 12,686. Five Pennsylvania industries increased their respective workforces by more than 50,000 people; Health Care led this growth (141,701). As in Luzerne and Lackawanna Counties, Pennsylvania's Manufacturing industry experienced the greatest loss of employment - nearly 8,000 workers in ten years.

Four Pennsylvania industries increased their annual payroll by more than \$5 billion, while 14 increased their annual payroll by more than \$1 billion, including the Health Care and Social Assistance industry (\$12.5 billion increase), the Professional, Scientific and Technical Services industry (\$7.7 billion increase), and the Finance and Insurance industry (\$7.1 billion increase).

As for number of business establishments, nine of the state's industries experienced increases of more than 1,000 establishments, while four industries experienced declines of more than 1,000. The Professional, Scientific and Technical Services industry experienced the greatest growth in business establishments (increase of 4,910); while

the Retail Trade industry experienced the greatest decrease in business establishments (decrease of 3,143).

Pennsylvania's fluctuations in its number of employees are fairly similar to Luzerne and Lackawanna Counties. In 2002, 76,000 more Pennsylvania residents were unemployed than in the prior year. Lackawanna County experienced the greatest employment growth, which rose 7.8% over the ten-year-period, compared with 5.0% in Luzerne County and 5.9% statewide. All such growth is a positive indicator.

The top three industries statewide and in both counties (although not in the same order) were Manufacturing, Health Care and Social Assistance, and Retail Trade. The Commonwealth of Pennsylvania and Luzerne County experienced the exact same trend, with the Manufacturing industry employing the greatest number of people from 1998-2001 and the Health Care and Social Assistance industry employing the greatest number of people from 2002-2007. Likewise, the Manufacturing industry in Luzerne County and throughout Pennsylvania was surpassed by the Retail Trade industry for having second greatest number of employees in 2004. The story was a bit different in Lackawanna County, where the Health Care and Social Assistance industry ranked first for all ten years; the Manufacturing industry ranked second from 1998-2001, after which point the Retail Trade industry took its place for the remainder of the years examined. .

Annual payroll grew significantly over the ten-year-period. Throughout the time frame, Luzerne County never posted a year to year drop in annual payroll, compared with Lackawanna County and Pennsylvania, which experienced one decrease from 2001-2002. Luzerne County recorded an increase of 44.1% in annual payroll from 1998-2007, compared with Lackawanna County and Pennsylvania, which each experienced growth of 42.9%. This is another important indicator, as the number of employees increased by an average of 6.2% over the ten years studied and the average annual payroll increased by more than 43%. It is important to note, however, that both Luzerne and Lackawanna Counties lag the Commonwealth of Pennsylvania and the nation in per capita income and average household income.

The Manufacturing industry led in annual payroll for the first four years examined, which is a direct correlation to the industry employing the greatest number of people during that time frame. In the Commonwealth of Pennsylvania, the Health Care and Social Assistance industry knocked Manufacturing from the top spot in 2004 and remained number one for the remainder of the study period; in Pennsylvania, the Professional, Scientific, and Technical Services industry ranked third in terms of annual payroll over all ten years examined. In Lackawanna County, the Health Care and Social Assistance industry surpassed the Manufacturing industry for the top spot in 2002, while the Retail Trade industry ranked third in nine of the ten years. In Luzerne County, the Manufacturing industry recorded the highest annual payroll from 1998-2006, and was topped by the Health Care and Social Assistance industry in 2007; the Retail Trade industry ranked third over all ten years.

While Luzerne County increased its number of business establishments by 0.90% over the period examined, and Lackawanna County increased its business establishments 2.9%, Pennsylvania increased its total number of business establishments in each year examined and by 4.3% over the entire period. It is important to note that the percentage of establishments with fewer than 50 employees never drastically changed throughout over the ten years in either county or statewide (hovering around 93-94%). This shows that although more people joined the workforce, the 20-21 industries they joined were small businesses.

The three industries with the greatest number of business establishments were almost identical both counties and in Pennsylvania as a whole. The Retail Trade industry recorded the greatest number of business establishments over all ten years, followed by the Health Care and Social Assistance and Other Services (except Public Administration) industries, which alternated between second and third. Although not the case in the Luzerne and Lackawanna Counties, Pennsylvania's Other Services (except Public Administration) industry recorded the second greatest number of business establishments in all ten years, followed by the Health Care and Social Assistance industry. The opposite was true in Lackawanna County, where the Health Care and Social Assistance industry ranked second and the Other Services (except Public Administration) industry ranked third. In Luzerne County, Other Services (except Public Administration) ranked second for just three years, and the Health Care and Social Assistance industry ranked second for seven years. It is important to again point out that in each region (Luzerne County, Lackawanna County and Pennsylvania), the same three industries accounted for about 40.5% of total business establishments each year.

In the end, Lackawanna County experienced the greatest increase in number of employees, Luzerne County experienced the greatest increase in annual payroll, and Pennsylvania as a whole experienced the greatest increase in number of business establishments. It can be assumed that such increases in employment, payroll, and business establishments are a result of overall growth within the three areas examined. The changes are largely signs of expansion in the years to come, and for the development of those professions that will be needed in the future.

While both counties increased their number of business establishments, employees, and payrolls, it is important to note that the growth rates were not as great as demonstrated by Pennsylvania as a whole. Lackawanna and Luzerne Counties continued to post lower per capita incomes and lower household income levels than the Commonwealth and the nation. The region should focus on sustaining and growing its finance and insurance and the professional and scientific industries. The diversity is not only helpful to the economy, but higher wages help to provide more balance to the regional economy, which for decades has been plagued by low wage jobs.

Research Methodology

The purpose of the U.S. Census Bureau's County Business Pattern data collection is to provide a thorough data analysis for various business establishments in the U.S. and Puerto Rico. It organizes and measures annual industry statistics for individual counties,

as well as for the state as a whole. The data in this report compiled by The Institute for Public Policy and Economic Development provides information for Lackawanna and Luzerne Counties as well as the Commonwealth of Pennsylvania. Pennsylvania includes 67 counties 46,058 square miles. Lackawanna and Luzerne Counties account for just 2.9% of Pennsylvania's total area and Luzerne County is nearly double the size of Lackawanna County; this information is crucial to keep in mind when comparing statistics included herein.

This report contains data from 1998-2007 on 21 different industries:

- Number of employees for the pay period including March 12
- First quarter payrolls
- Annual payrolls
- Total business establishments (which is further broken down by employment size)

Under each of the charts/tables of the following pages is a brief summary that reports on Luzerne and Lackawanna Counties, as well as on the Commonwealth of Pennsylvania. Near the end of the report is an in-depth review of each indicator over the ten-year-period. Finally, a comparative analysis displays noteworthy changes, similarities and differences between each of the counties and Pennsylvania.

*NOTE: For the charts containing the character "D," information was withheld to avoid disclosing data for individual companies' and data are included in higher level totals.

1998 BUSINESS PATTERNS

Luzerne County

1998 Luzerne County Business Patterns					
Code	Industry Code Description	# of Employees for week including March 12	1st Quarter Payroll (\$1,000)	Annual Payroll (\$1,000)	Total Establishments
-----	Total	122,507	694,274	2,922,120	7,636
11----	Forestry, Fishing, Hunting, and Agriculture Support	0-19	D	D	4
21----	Mining	224	1,542	6,299	17
22----	Utilities	1,073	11,060	43,910	15
23----	Construction	5,359	33,955	179,006	818
31----	Manufacturing	23,026	167,743	684,959	406
42----	Wholesale Trade	5,865	39,442	172,650	383
44----	Retail Trade	18,011	64,862	277,864	1,392
48----	Transportation and Warehousing	4,598	25,524	112,811	226
51----	Information	3,327	28,026	106,668	101
52----	Finance and Insurance	5,607	43,967	179,846	441
53----	Real Estate and Rental and Leasing	1,343	16,272	38,031	206
54----	Professional, Scientific and Technical Services	3,810	21,968	104,945	520
55----	Management of Companies and Enterprises	2,499	24,136	92,713	40
56----	Admin, Support, Waste Mgt, Remediation Services	6,365	20,788	97,259	359
61----	Educational Services	3,353	14,046	57,068	56
62----	Health Care and Social Assistance	20,701	130,652	552,238	893
71----	Arts, Entertainment and Recreation	1,249	3,339	17,069	74
72----	Accommodation and Food Services	9,511	19,417	83,685	698
81----	Other Services (except public administration)	4,742	15,779	66,945	927
95----	Auxiliaries (exc corporate, subsidiary and regional mgt)	1,718	11,341	45,803	15
99----	Unclassified Establishments	100-249	D	D	45

In 1998, Luzerne County had a total of 7,636 business establishments employing 122,507 workers for the pay period including March 12. The first quarter payroll was \$694,274,000 and more than \$2.9 billion for the year. The Manufacturing industry was the industry with the highest level of employment and the highest annual payroll. The industry employed 23,026 workers, which comprise about 18.8% of Luzerne County's total workforce. The Manufacturing industry's overall payroll totaled \$684,959,000, which equated to approximately 23.4% of the total annual payroll for all of the county's industries. The Health Care and Social Assistance industry held the second highest employment rate and annual payroll, with a total of 20,701 workers earning \$552,238,000 that year. The Retail Trade industry had the greatest number of business establishments, with 1,392 separate institutions, accounting for 18.2% of all of the county's business establishments. The Forestry, Fishing, Hunting and Agricultural Support industry had the fewest business establishments. The Utility industry had the highest average annual payroll per employee, at \$40,922.

1998 Luzerne County Number of Establishments by Employment-size class											
Code	Industry Code Description	Total Estb.	1-4	5-9	10-19	20-49	50-99	100-249	250-499	500-999	1000 or more
-----	Total	7,636	3,992	1,551	944	703	222	167	36	16	5
11----	Forestry, Fishing, Hunting, and Agriculture Support	4	3	0	1	0	0	0	0	0	0
21----	Mining	17	5	5	3	3	1	0	0	0	0
22----	Utilities	15	3	4	2	1	1	2	2	0	0
23----	Construction	818	579	105	67	53	9	5	0	0	0
31----	Manufacturing	406	108	58	60	77	38	46	15	3	1
42----	Wholesale Trade	383	168	73	63	58	13	7	0	1	0
44----	Retail Trade	1,392	620	382	211	105	47	22	5	0	0
48----	Transportation and Warehousing	226	103	40	25	48	5	3	1	0	1
51----	Information	101	44	15	14	13	7	4	4	0	0
52----	Finance and Insurance	441	228	119	56	21	10	4	1	2	0
53----	Real Estate and Rental and Leasing	206	140	34	20	10	1	1	0	0	0
54----	Professional, Scientific and Technical Services	520	362	85	41	20	3	8	1	0	0
55----	Management of Companies and Enterprises	40	4	11	5	9	3	6	1	1	0
56----	Admin, Support, Waste Mgt, Remediation Services	359	189	58	41	43	15	12	0	1	0
61----	Educational Services	56	12	13	13	9	4	2	1	1	1
62----	Health Care and Social Assistance	893	387	227	136	75	29	27	5	5	2
71----	Arts, Entertainment and Recreation	74	39	9	9	11	3	3	0	0	0
72----	Accommodation and Food Services	698	324	113	105	117	29	10	0	0	0
81----	Other Services (except public administration)	927	633	197	65	27	3	2	0	0	0
95----	Auxiliaries (exc corporate, subsidiary and regional)	15	1	2	4	2	1	3	0	2	0
99----	Unclassified Establishments	45	40	1	3	1	0	0	0	0	0

In 1998, the majority of Luzerne County's business establishments (3,992) employed between 1-4 people. The county included just two business establishments that employed 1,000 or more people; both establishments were in the Health Care and Social Assistance industry. Nearly 89% of business establishments in the Unclassified Establishments category employed between 1-4 people. Also, 89.68% of all Luzerne County business establishments employed fewer than 50 people. Generally, as the employment-base increases, the number of establishments greatly declines.

Lackawanna County

1998 Lackawanna County Business Patterns					
Code	Industry Code Description	# of Employees for week including March 12	1st Quarter Payroll (\$1,000)	Annual Payroll (\$1,000)	Total Establishments
-----	Total	90,808	481,554	2,073,488	5,393
11----	Forestry, Fishing, Hunting, and Agriculture Support	0-19	D	D	1
21----	Mining	20-99	D	D	8
22----	Utilities	186	1,651	6,580	10
23----	Construction	2,791	16,267	83,700	529
31----	Manufacturing	16,087	114,560	473,745	312
42----	Wholesale Trade	3,544	23,782	103,402	277
44----	Retail Trade	13,420	45,377	196,927	1,027
48----	Transportation and Warehousing	1,904	11,123	51,282	122
51----	Information	2,908	19,727	74,689	61
52----	Finance and Insurance	4,426	35,729	148,866	294
53----	Real Estate and Rental and Leasing	848	3,270	14,366	140
54----	Professional, Scientific and Technical Services	2,725	19,161	84,506	378
55----	Management of Companies and Enterprises	1,825	15,357	63,478	23
56----	Admin, Support, Waste Mgt, Remediation Services	4,159	15,714	73,108	216
61----	Educational Services	5,255	23,821	93,745	55
62----	Health Care and Social Assistance	16,202	95,209	430,728	661
71----	Arts, Entertainment and Recreation	724	1,861	10,222	80
72----	Accommodation and Food Services	7,527	15,824	66,350	515
81----	Other Services (except public administration)	4,386	14,924	61,846	614
95----	Auxiliaries (exc corporate, subsidiary and regional mgt)	1,723	7,700	32,893	10
99----	Unclassified Establishments	122	290	1,502	60

In 1998, Lackawanna County included 90,808 people employed in 5,393 business establishments. The year's first quarter payroll totaled \$481,554,000, and reached more than \$2 billion for the year. The Health Care and Social Assistance industry employed 16,202 workers and the second highest annual payroll (\$430,728,000). The Manufacturing industry had the highest annual payroll at \$473,745,000 and the second highest number of employees (16,087). Like Luzerne County, Lackawanna's Retail Trade industry included the most establishments at 1,027, or 19% of all of the county's business establishments. While the Mining industry included just eight establishments, the Forestry, Fishing, Hunting and Agriculture Support industry included just one business establishment. The average annual payroll per employee for all of Lackawanna County's industries was just \$22,833.

1998 Lackawanna County Number of Establishments by Employment-size class											
Code	Industry Code Description	Total Estb.	1-4	5-9	10-19	20-49	50-99	100-249	250-499	500-999	1000 or more
-----	Total	5,393	2,843	1,070	671	473	172	119	29	11	5
11----	Forestry, Fishing, Hunting, and Agriculture Support	1	1	0	0	0	0	0	0	0	0
21----	Mining	8	5	1	2	0	0	0	0	0	0
22----	Utilities	10	5	2	1	1	0	1	0	0	0
23----	Construction	529	376	86	36	26	4	1	0	0	0
31----	Manufacturing	312	100	42	39	53	38	28	9	1	2
42----	Wholesale Trade	277	121	63	45	36	8	4	0	0	0
44----	Retail Trade	1,027	479	247	164	88	28	17	4	0	0
48----	Transportation and Warehousing	122	57	21	14	20	7	3	0	0	0
51----	Information	61	19	9	9	15	1	5	1	2	0
52----	Finance and Insurance	294	140	78	46	15	6	6	1	2	0
53----	Real Estate and Rental and Leasing	140	84	30	21	4	1	0	0	0	0
54----	Professional, Scientific and Technical Services	378	236	70	39	26	6	1	0	0	0
55----	Management of Companies and Enterprises	23	3	4	4	6	2	1	3	0	0
56----	Admin, Support, Waste Mgt, Remediation Services	216	126	30	19	16	12	13	0	0	0
61----	Educational Services	55	21	6	5	12	4	1	3	2	1
62----	Health Care and Social Assistance	661	330	145	78	55	22	21	5	3	2
71----	Arts, Entertainment and Recreation	80	46	12	8	13	0	1	0	0	0
72----	Accommodation and Food Services	515	241	91	81	65	29	7	1	0	0
81----	Other Services (except public administration)	614	400	128	54	22	3	6	1	0	0
95----	Auxiliaries (exc corporate, subsidiary and regional)	10	1	2	1	0	1	3	1	1	0
99----	Unclassified Establishments	60	52	3	5	0	0	0	0	0	0

The majority of Lackawanna County's business establishments (2,843) employed between 1-4 people. Most of the county's industries had over 60% of their business establishments in the 1-4 workers range; about 94% of all establishments employed fewer than 50 workers. Similarly, establishments employing 1,000 or more people had the fewest total establishments and were primarily in the Manufacturing and Health Care and Social Assistance industries.

Pennsylvania

1998 Pennsylvania Business Patterns					
Code	Industry Code Description	# of Employees for week including March 12	1st Quarter Payroll (\$1,000)	Annual Payroll (\$1,000)	Total Establishments
-----	Total	4,906,190	34,629,675	145,569,019	292,659
11----	Forestry, Fishing, Hunting, and Agriculture Support	2,508	11,717	56,532	630
21----	Mining	17,820	167,142	730,716	915
22----	Utilities	37,333	590,488	2,227,699	611
23----	Construction	225,797	1,658,515	8,279,710	28,407
31----	Manufacturing	818,215	6,873,327	28,636,023	17,267
42----	Wholesale Trade	234,940	2,189,434	9,203,086	17,082
44----	Retail Trade	645,472	2,573,110	11,092,400	49,471
48----	Transportation and Warehousing	149,640	1,072,662	4,602,314	6,633
51----	Information	122,065	1,283,500	5,019,865	4,351
52----	Finance and Insurance	272,427	3,015,753	11,510,271	17,149
53----	Real Estate and Rental and Leasing	60,852	378,908	1,637,670	8,574
54----	Professional, Scientific and Technical Services	266,917	2,798,879	12,571,204	25,507
55----	Management of Companies and Enterprises	135,655	2,152,118	7,824,453	1,835
56----	Admin, Support, Waste Mgt, Remediation Services	278,403	1,272,886	5,632,982	13,517
61----	Educational Services	179,134	1,005,927	4,140,756	2,583
62----	Health Care and Social Assistance	740,333	4,914,761	20,979,688	31,307
71----	Arts, Entertainment and Recreation	60,183	264,888	1,274,987	4,031
72----	Accommodation and Food Services	364,480	851,991	3,736,716	24,471
81----	Other Services (except public administration)	239,673	969,025	4,148,515	35,493
95----	Auxiliaries (exc corporate, subsidiary and regional mgt)	51,690	576,303	2,212,474	629
99----	Unclassified Establishments	2,653	8,341	50,958	2,196

Pennsylvania's 1998 data revealed that more than 4.9 million employees worked in 292,659 business establishments. The state's estimated annual payroll was well over \$145 billion. Pennsylvania's most heavily employed and highest paid industries were similar to Luzerne and Lackawanna Counties. The state's manufacturing industry employed 818,215 workers, and represents the industry with the greatest number of paid employees. In addition, the industry had the highest annual payroll at \$28,636,023,000. Health Care and Social Assistance was the state's second largest industry, employing 740,333 people who earned a total of \$20.9 billion that year. The Professional, Technical and Scientific Services industry ranked third, with a total annual payroll of \$12.5 billion (showing a significant gap between annual payroll of the Health Care and Social Assistance industry). Like Luzerne and Lackawanna counties, the Retail Trade industry had the most business establishments, totaling 49,471; the Retail Trade industry also had the third highest number of paid employees at 645,472. The lowest number of paid employees worked in the Unclassified Establishments and Forestry, Fishing, Hunting and Agriculture Support industries. Statewide, the average annual payroll per worker was \$29,670. The Utilities industry had the highest annual payroll per worker; Utility industry workers, on average, earned \$30,000 more per year than the average state salary.

1998 Pennsylvania Number of Establishments by Employment-size class											
Code	Industry Code Description	Total Estb.	1-4	5-9	10-19	20-49	50-99	100-249	250-499	500-999	1000 or more
-----	Total	292,659	152,029	60,967	37,826	25,263	8,800	5,482	1,418	553	321
11----	Forestry, Fishing, Hunting, and Agriculture Support	630	484	101	31	9	3	2	0	0	0
21----	Mining	915	369	184	168	120	47	19	5	3	0
22----	Utilities	611	181	98	83	101	61	59	15	8	5
23----	Construction	28,407	18,507	4,930	2,720	1,599	431	172	33	10	5
31----	Manufacturing	17,267	5,168	2,860	2,848	3,040	1,506	1,197	432	153	63
42----	Wholesale Trade	17,082	8,218	3,506	2,634	1,874	543	239	51	12	5
44----	Retail Trade	49,471	21,740	13,360	7,956	3,942	1,393	914	155	8	3
48----	Transportation and Warehousing	6,633	3,353	1,062	897	808	284	184	26	11	8
51----	Information	4,351	2,004	743	553	543	256	171	52	22	7
52----	Finance and Insurance	17,149	8,740	4,443	2,217	1,029	377	205	73	37	28
53----	Real Estate and Rental and Leasing	8,574	5,528	1,682	850	371	85	48	7	3	0
54----	Professional, Scientific and Technical Services	25,507	16,765	4,200	2,367	1,398	420	240	80	26	11
55----	Management of Companies and Enterprises	1,835	495	312	281	313	169	140	67	35	23
56----	Admin, Support, Waste Mgt, Remediation Services	13,517	7,688	2,182	1,384	1,153	534	411	108	47	10
61----	Educational Services	2,583	1,047	448	343	396	154	98	31	31	35
62----	Health Care and Social Assistance	31,307	14,186	7,870	4,614	2,661	760	816	188	106	106
71----	Arts, Entertainment and Recreation	4,031	2,193	660	507	405	162	82	15	6	1
72----	Accommodation and Food Services	24,471	10,863	4,286	3,836	3,876	1,249	312	37	10	2
81----	Other Services (except public administration)	35,493	22,301	7,849	3,378	1,498	316	122	24	3	2
95----	Auxiliaries (exc corporate, subsidiary and regional)	629	155	92	116	117	50	51	19	22	7
99----	Unclassified Establishments	2,196	2,044	99	43	10	0	0	0	0	0

Nearly 52% of Pennsylvania's business establishments (or 152,029 total establishments) employed between 1-4 people; this percentage is nearly identical to the Luzerne and Lackawanna Counties' figures. The greatest number of business establishments (49,471) fell into the Retail industry, followed by 35,493 business establishments in the Other Services (except public administration) industry. As in Luzerne and Lackawanna Counties, Pennsylvania includes a fewer number of establishments that employ a large number of people. Just 0.1% of all business establishments employed 1,000 or more people, compared with 86% of business establishments with fewer than 20 employees, and 94% of establishments employing fewer than 50 people.

1999 BUSINESS PATTERNS

Luzerne County

1999 Luzerne County Business Patterns					
Code	Industry Code Description	# of Employees for week including March 12	1st Quarter Payroll (\$1,000)	Annual Payroll (\$1,000)	Total Establishments
-----	Total	122,554	695,110	2,998,186	7,606
11----	Forestry, Fishing, Hunting, and Agriculture Support	0-19	D	D	1
21----	Mining	144	1,041	5,392	19
22----	Utilities	1,065	10,500	46,996	15
23----	Construction	5,633	37,603	194,043	800
31----	Manufacturing	22,159	165,459	671,754	397
42----	Wholesale Trade	6,754	49,365	211,141	379
44----	Retail Trade	17,925	66,182	291,884	1,371
48----	Transportation and Warehousing	4,348	25,228	111,931	230
51----	Information	3,073	26,185	104,700	102
52----	Finance and Insurance	5,855	47,194	192,158	448
53----	Real Estate and Rental and Leasing	1,300	6,696	30,063	199
54----	Professional, Scientific and Technical Services	3,806	24,697	118,593	543
55----	Management of Companies and Enterprises	1,963	16,409	69,991	45
56----	Admin, Support, Waste Mgt, Remediation Services	6,433	21,760	102,978	362
61----	Educational Services	3,635	13,404	58,044	58
62----	Health Care and Social Assistance	20,674	131,956	554,172	877
71----	Arts, Entertainment and Recreation	1,656	3,975	21,357	74
72----	Accommodation and Food Services	9,337	19,562	89,444	678
81----	Other Services (except public administration)	4,790	16,178	70,749	918
95----	Auxiliaries (exc corporate, subsidiary and regional mgt)	1,932	11,394	51,244	16
99----	Unclassified Establishments	20-99	D	D	74

For 1999, Luzerne County had 122,554 employees working in 7,606 business establishments. In 1999, there were 30 fewer business establishments than the prior year. The first quarter payroll in Luzerne County was \$695,110,000, while the annual payroll reached nearly \$3 billion. As in the prior year the Manufacturing industry employed the greatest number of people (22,159) and had the highest annual payroll (\$671,754,000); it should be noted, however, that both figures represented declines from the prior year. The Health Care and Social Assistance industry employed 20,674 people, which was a slight decrease from the prior year; the industry, however, increased its annual payroll from 1998. The Health Care and Social Assistance industry again had the second highest payroll at \$554,172,000. The Retail Trade industry again had the greatest number of business establishments at 1,371; 597 establishments employed between 1-4 people. The Utilities had the highest average annual payroll per employee of \$44,127 - a \$4,000 increase over the previous year.

1999 Luzerne County Number of Establishments by Employment-size class											
Code	Industry Code Description	Total Estb.	1-4	5-9	10-19	20-49	50-99	100-249	250-499	500-999	1000 or more
-----	Total	7,606	3,998	1,527	966	661	231	159	43	16	5
11----	Forestry, Fishing, Hunting, and Agriculture Support	1	1	0	0	0	0	0	0	0	0
21----	Mining	19	7	7	4	1	0	0	0	0	0
22----	Utilities	15	3	4	2	1	1	2	2	0	0
23----	Construction	800	547	110	80	43	14	6	0	0	0
31----	Manufacturing	397	117	57	50	76	39	38	15	4	1
42----	Wholesale Trade	379	164	77	62	50	15	8	2	1	0
44----	Retail Trade	1,371	597	382	224	97	40	25	6	0	0
48----	Transportation and Warehousing	230	99	39	33	47	7	4	0	1	0
51----	Information	102	48	11	13	15	9	3	3	0	0
52----	Finance and Insurance	448	234	123	57	19	6	6	1	1	1
53----	Real Estate and Rental and Leasing	199	134	33	21	9	1	1	0	0	0
54----	Professional, Scientific and Technical Services	543	382	87	45	16	7	5	1	0	0
55----	Management of Companies and Enterprises	45	9	10	8	9	3	4	2	0	0
56----	Admin, Support, Waste Mgt, Remediation Services	362	194	53	48	35	16	13	3	0	0
61----	Educational Services	58	13	15	11	10	4	2	0	2	1
62----	Health Care and Social Assistance	877	378	218	136	76	27	29	6	5	2
71----	Arts, Entertainment and Recreation	74	38	9	11	8	5	2	1	0	0
72----	Accommodation and Food Services	678	322	105	94	118	33	6	0	0	0
81----	Other Services (except public administration)	918	639	181	63	29	3	3	0	0	0
95----	Auxiliaries (exc corporate, subsidiary and regional)	16	2	3	3	2	1	2	1	2	0
99----	Unclassified Establishments	74	70	3	1	0	0	0	0	0	0

In 1999, the greatest number of Luzerne County business establishments (3,998 or 52%) employed between 1-4 people. Industries employing 1,000 or more people included the fewest number of business establishments. The Health Care and Social Assistance industry accounted for two of the five establishments that employed more than 1,000 people; Manufacturing, Finance and Insurance and Educational Services comprised the other three.

Lackawanna County

1999 Lackawanna County Business Patterns					
Code	Industry Code Description	# of Employees for week including March 12	1st Quarter Payroll (\$1,000)	Annual Payroll (\$1,000)	Total Establishments
-----	Total	89,771	502,550	2,180,815	5,393
11----	Forestry, Fishing, Hunting, and Agriculture Support	0-19	D	D	2
21----	Mining	20-99	D	D	9
22----	Utilities	231	2,411	7,451	10
23----	Construction	2,930	17,425	91,186	515
31----	Manufacturing	15,753	116,984	489,363	303
42----	Wholesale Trade	3,359	23,757	103,027	278
44----	Retail Trade	12,891	46,612	208,893	1,007
48----	Transportation and Warehousing	2,108	13,612	62,927	131
51----	Information	2,600	18,214	75,990	68
52----	Finance and Insurance	4,236	38,694	148,596	320
53----	Real Estate and Rental and Leasing	862	3,527	15,797	143
54----	Professional, Scientific and Technical Services	2,683	18,977	94,496	391
55----	Management of Companies and Enterprises	1,914	14,806	63,876	25
56----	Admin, Support, Waste Mgt, Remediation Services	4,657	18,543	78,515	205
61----	Educational Services	5,316	28,419	99,167	53
62----	Health Care and Social Assistance	16,231	99,808	463,040	666
71----	Arts, Entertainment and Recreation	712	1,741	10,423	72
72----	Accommodation and Food Services	7,240	15,601	66,925	511
81----	Other Services (except public administration)	4,307	14,964	63,956	606
95----	Auxiliaries (exc corporate, subsidiary and regional mgt)	1,628	8,052	34,257	10
99----	Unclassified Establishments	63	153	1,258	68

In 1999, Lackawanna County reported 89,771 paid employees, which was a decrease of 1,037 workers from the prior year – although the number of total establishments remained the same. The Health Care and Social Assistance industry employed 478 more people than the Manufacturing industry – and both were the county’s leading industries. The Manufacturing industry’s annual payroll surpassed the Health Care and Social Assistance industry’s annual payroll by more than \$26 million. Unlike Luzerne County, the highest average annual payroll per employee was in the Professional, Scientific, and Technical Services industry, at over \$35,000. The Accommodation and Food Services industry had the lowest annual payroll per employee, at just \$9,243 per year. The Retail Trade industry had the greatest number of business establishments (1,007).

1999 Lackawanna County Number of Establishments by Employment-size class											
Code	Industry Code Description	Total Estb.	1-4	5-9	10-19	20-49	50-99	100-249	250-499	500-999	1000 or more
-----	Total	5,393	2,859	1,060	687	460	166	114	32	10	5
11----	Forestry, Fishing, Hunting, and Agriculture Support	2	2	0	0	0	0	0	0	0	0
21----	Mining	9	6	1	2	0	0	0	0	0	0
22----	Utilities	10	5	1	2	0	1	1	0	0	0
23----	Construction	515	354	84	43	28	6	0	0	0	0
31----	Manufacturing	303	93	43	38	53	38	25	10	1	2
42----	Wholesale Trade	278	116	72	47	32	8	3	0	0	0
44----	Retail Trade	1,007	462	239	171	93	20	18	4	0	0
48----	Transportation and Warehousing	131	63	25	15	16	7	5	0	0	0
51----	Information	68	26	11	7	14	4	3	2	1	0
52----	Finance and Insurance	320	165	77	49	15	7	5	1	1	0
53----	Real Estate and Rental and Leasing	143	87	27	25	2	2	0	0	0	0
54----	Professional, Scientific and Technical Services	391	253	72	38	22	5	1	0	0	0
55----	Management of Companies and Enterprises	25	3	7	4	6	1	1	2	1	0
56----	Admin, Support, Waste Mgt, Remediation Services	205	116	24	23	19	6	15	2	0	0
61----	Educational Services	53	17	5	10	12	2	1	3	2	1
62----	Health Care and Social Assistance	666	335	144	79	54	24	20	5	3	2
71----	Arts, Entertainment and Recreation	72	39	12	12	7	2	0	0	0	0
72----	Accommodation and Food Services	511	251	87	73	63	28	8	1	0	0
81----	Other Services (except public administration)	606	399	125	48	24	4	5	1	0	0
95----	Auxiliaries (exc corporate, subsidiary and regional)	10	1	2	1	0	1	3	1	1	0
99----	Unclassified Establishments	68	66	2	0	0	0	0	0	0	0

Most of Lackawanna County's establishments employed between 1-4 people. In 1999, 2,859 business establishments (53%) fell into this range. Approximately 94% of all business establishments employed fewer than 50 people. Further, 96% of the leading industry's (Retail Trade) business establishments employed 50 or fewer workers. Five establishments that employed 1,000 or more people were in the Manufacturing and Health Care and Social Assistance industries.

Pennsylvania

1999 Pennsylvania Business Patterns					
Code	Industry Code Description	# of Employees for week including March 12	1st Quarter Payroll (\$1,000)	Annual Payroll (\$1,000)	Total Establishments
-----	Total	4,986,591	36,140,232	154,388,369	293,491
11----	Forestry, Fishing, Hunting, and Agriculture Support	3,033	14,759	67,338	642
21----	Mining	17,102	165,010	721,023	913
22----	Utilities	37,052	621,577	2,398,247	626
23----	Construction	240,414	1,845,598	9,075,867	28,325
31----	Manufacturing	809,825	6,946,162	29,662,634	17,038
42----	Wholesale Trade	237,240	2,272,923	9,625,546	16,909
44----	Retail Trade	653,260	2,699,204	11,896,641	48,978
48----	Transportation and Warehousing	155,320	1,081,368	4,871,773	6,663
51----	Information	128,182	1,445,062	5,487,894	4,626
52----	Finance and Insurance	278,808	3,264,842	12,399,714	17,144
53----	Real Estate and Rental and Leasing	63,254	399,443	1,783,470	8,577
54----	Professional, Scientific and Technical Services	284,105	3,090,612	13,915,444	26,221
55----	Management of Companies and Enterprises	137,552	2,255,591	8,581,157	1,955
56----	Admin, Support, Waste Mgt, Remediation Services	289,706	1,368,011	6,098,983	13,517
61----	Educational Services	192,572	1,094,855	4,578,601	2,667
62----	Health Care and Social Assistance	733,507	4,802,385	21,207,267	31,383
71----	Arts, Entertainment and Recreation	63,000	290,034	1,402,088	4,008
72----	Accommodation and Food Services	364,085	879,183	3,914,586	24,039
81----	Other Services (except public administration)	243,961	1,007,522	4,358,601	35,354
95----	Auxiliaries (exc corporate, subsidiary and regional mgt)	51,478	586,161	2,257,916	652
99----	Unclassified Establishments	3,135	9,930	83,579	3,254

In 1999, Pennsylvania reported 5 million people in the workforce. State data revealed that there were 293,491 total business establishments with an annual payroll of more than \$154 billion. Although Health Care and Social Assistance grew at a fast pace in Lackawanna and Luzerne Counties, the Manufacturing industry remained the state's top industry in terms of employment level and annual payroll – with 809,825 workers who earned over \$29 billion that year. The Health Care and Social Assistance industry ranked second in terms of employment and annual payroll – with 733,507 workers earning \$21.2 billion that year. The Professional, Technical and Scientific Services industry ranked third in terms of annual payroll, which reached \$13.9 billion. The Utilities and Management of Companies and Enterprises industries ranked highest in terms of average annual payroll, as employees in that industry earned more than double the average annual payroll of all other Pennsylvania industries. The Retail Trade industry ranked third in employment – with 653,260 workers; this industry had the greatest number of business establishments (48,978), although 1999 figures showed a decline from the prior year's total. The Utilities and Forestry, Fishing, Hunting and Agriculture Support industries had the fewest number of business establishments.

1999 Pennsylvania Number of Establishments by Employment-size class											
Code	Industry Code Description	Total Estb.	1-4	5-9	10-19	20-49	50-99	100-249	250-499	500-999	1000 or more
-----	Total	293,491	152,761	60,387	37,968	25,401	9,012	5,577	1,520	549	316
11----	Forestry, Fishing, Hunting, and Agriculture Support	642	489	95	39	10	6	3	0	0	0
21----	Mining	913	381	184	164	115	41	20	6	2	0
22----	Utilities	626	197	95	89	98	59	60	15	9	4
23----	Construction	28,325	18,193	4,927	2,863	1,627	475	185	39	10	6
31----	Manufacturing	17,038	5,135	2,781	2,838	2,940	1,510	1,189	429	156	60
42----	Wholesale Trade	16,909	8,099	3,487	2,601	1,849	558	245	52	13	5
44----	Retail Trade	48,978	21,550	12,942	7,988	3,970	1,402	952	165	6	3
48----	Transportation and Warehousing	6,663	3,355	1,050	914	799	291	202	31	13	8
51----	Information	4,626	2,196	740	606	563	264	173	53	24	7
52----	Finance and Insurance	17,144	8,886	4,430	2,098	997	370	217	80	37	29
53----	Real Estate and Rental and Leasing	8,577	5,503	1,661	881	373	92	51	13	3	0
54----	Professional, Scientific and Technical Services	26,221	17,211	4,255	2,445	1,470	453	259	92	24	12
55----	Management of Companies and Enterprises	1,955	581	326	271	335	176	145	59	38	24
56----	Admin, Support, Waste Mgt, Remediation Services	13,517	7,674	2,142	1,399	1,143	550	428	132	37	12
61----	Educational Services	2,667	1,060	468	346	416	169	104	33	32	39
62----	Health Care and Social Assistance	31,383	13,994	7,962	4,714	2,724	795	777	215	109	93
71----	Arts, Entertainment and Recreation	4,008	2,192	625	494	426	174	69	19	8	1
72----	Accommodation and Food Services	24,039	10,632	4,262	3,656	3,884	1,240	316	38	9	2
81----	Other Services (except public administration)	35,354	22,199	7,723	3,408	1,525	339	132	23	2	3
95----	Auxiliaries (exc corporate, subsidiary and regional)	652	157	95	122	129	48	50	26	17	8
99----	Unclassified Establishments	3,254	3,077	137	32	8	0	0	0	0	0

Of all business establishments in Pennsylvania, 152,761 (52%) employed between 1-4 people. Most business establishments (22,199) in this range were in the Other Services (except public administration) industry. The Retail Trade industry included 21,550 business establishments. In the 1,000 or more employee range, the Health Care and Social Assistance industry had the greatest number of business establishments – even though there was a decline in establishments from the prior year. Like in 1998, just 0.1% of all business establishments employed 1,000 or more people, compared with 86% of all business establishments that employed less than 20 people.

2000 BUSINESS PATTERNS

Luzerne County

2000 Luzerne County Business Patterns					
Code	Industry Code Description	# of Employees for week including March 12	1st Quarter Payroll (\$1,000)	Annual Payroll (\$1,000)	Total Establishments
-----	Total	127,328	763,027	3,203,758	7,661
11----	Forestry, Fishing, Hunting, and Agriculture Support	0-19	D	D	3
21----	Mining	183	1,429	6,804	18
22----	Utilities	1,245	15,006	61,260	21
23----	Construction	5,721	40,761	196,424	777
31----	Manufacturing	21,722	171,815	704,138	383
42----	Wholesale Trade	6,529	55,712	225,820	375
44----	Retail Trade	18,914	75,067	320,793	1,375
48----	Transportation and Warehousing	4,356	27,934	121,662	233
51----	Information	3,079	28,405	110,568	103
52----	Finance and Insurance	5,622	50,210	185,367	457
53----	Real Estate and Rental and Leasing	1,907	12,517	53,367	200
54----	Professional, Scientific and Technical Services	4,138	31,127	128,245	554
55----	Management of Companies and Enterprises	2,276	14,725	61,584	42
56----	Admin, Support, Waste Mgt, Remediation Services	9,631	31,742	145,795	359
61----	Educational Services	3,630	15,041	62,384	60
62----	Health Care and Social Assistance	20,248	132,560	565,122	946
71----	Arts, Entertainment and Recreation	1,348	4,060	19,390	74
72----	Accommodation and Food Services	9,728	21,703	93,204	690
81----	Other Services (except public administration)	4,637	17,329	72,097	908
95----	Auxiliaries (exc corporate, subsidiary and regional mgt)	2,357	15,770	68,458	18
99----	Unclassified Establishments	20-99	D	D	65

From 1999 to 2000, Luzerne County experienced a significant increase in both paid employees and annual payroll. In 2000, Luzerne County had 127,328 paid employees - 4,774 more than the prior year – a first quarter payroll of \$763 million, and an annual payroll of \$3.2 billion. In addition, the number of business establishments increased to 7,661. The Manufacturing industry had the highest employment rate and annual payroll, with 21,722 employees earning \$704 million that year. The Health Care and Social Assistance had the second highest employment rate and annual payroll, with 20,248 workers earning \$565 million that year. The Utilities industry paid the highest average annual payroll per employee, which was about \$5,000 higher than the prior year. The Retail Trade industry had the greatest number of business establishments at 1,375.

2000 Luzerne County Number of Establishments by Employment-size class											
Code	Industry Code Description	Total Estb.	1-4	5-9	10-19	20-49	50-99	100-249	250-499	500-999	1000 or more
-----	Total	7,661	3,979	1,578	988	665	225	161	36	24	5
11----	Forestry, Fishing, Hunting, and Agriculture Support	3	3	0	0	0	0	0	0	0	0
21----	Mining	18	7	6	2	2	1	0	0	0	0
22----	Utilities	21	4	4	3	2	4	3	1	0	0
23----	Construction	777	521	118	67	52	13	6	0	0	0
31----	Manufacturing	383	94	65	57	73	36	41	12	4	1
42----	Wholesale Trade	375	164	76	63	50	11	9	1	1	0
44----	Retail Trade	1,375	588	372	228	113	38	30	6	0	0
48----	Transportation and Warehousing	233	106	35	34	44	9	4	0	1	0
51----	Information	103	46	14	14	14	8	4	3	0	0
52----	Finance and Insurance	457	246	126	52	21	7	2	1	2	0
53----	Real Estate and Rental and Leasing	200	128	37	25	6	2	1	0	1	0
54----	Professional, Scientific and Technical Services	554	384	95	44	18	6	6	1	0	0
55----	Management of Companies and Enterprises	42	8	10	7	11	1	3	0	2	0
56----	Admin, Support, Waste Mgt, Remediation Services	359	179	64	45	37	13	16	2	2	1
61----	Educational Services	60	17	13	11	10	4	2	0	2	1
62----	Health Care and Social Assistance	946	432	232	145	76	22	25	5	7	2
71----	Arts, Entertainment and Recreation	74	35	14	9	9	5	1	1	0	0
72----	Accommodation and Food Services	690	323	112	107	101	41	6	0	0	0
81----	Other Services (except public administration)	908	629	178	72	24	3	2	0	0	0
95----	Auxiliaries (exc corporate, subsidiary and regional)	18	3	4	3	2	1	0	3	2	0
99----	Unclassified Establishments	65	62	3	0	0	0	0	0	0	0

Most Luzerne County business establishments (3,979 or 52%) employed between 1-4 people. The county included just five business establishments employing 1,000 or more people; two of which were in the Health Care and Social Assistance industry.

Lackawanna County

2000 Lackawanna County Business Patterns					
Code	Industry Code Description	# of Employees for week including March 12	1st Quarter Payroll (\$1,000)	Annual Payroll (\$1,000)	Total Establishments
-----	Total	93,383	574,120	2,356,781	5,422
11----	Forestry, Fishing, Hunting, and Agriculture Support	6	30	136	3
21----	Mining	88	370	2,453	10
22----	Utilities	398	4,881	20,277	12
23----	Construction	3,203	20,938	100,126	512
31----	Manufacturing	15,324	124,958	494,799	293
42----	Wholesale Trade	3,629	27,979	114,895	273
44----	Retail Trade	13,391	51,392	219,539	1,012
48----	Transportation and Warehousing	2,128	14,779	64,654	131
51----	Information	3,959	29,980	121,699	86
52----	Finance and Insurance	4,668	48,574	193,687	324
53----	Real Estate and Rental and Leasing	847	3,682	13,985	148
54----	Professional, Scientific and Technical Services	2,685	21,099	94,290	401
55----	Management of Companies and Enterprises	1,463	12,364	49,321	23
56----	Admin, Support, Waste Mgt, Remediation Services	4,546	21,389	92,447	205
61----	Educational Services	5,410	32,993	110,687	52
62----	Health Care and Social Assistance	17,419	114,774	476,775	680
71----	Arts, Entertainment and Recreation	669	1,847	10,472	72
72----	Accommodation and Food Services	7,480	17,027	70,751	512
81----	Other Services (except public administration)	4,283	15,721	67,912	610
95----	Auxiliaries (exc corporate, subsidiary and regional mgt)	1,698	9,092	36,298	10
99----	Unclassified Establishments	89	251	1,578	53

In 2000, Lackawanna County experienced a significant increase in the number of paid employees after a drop in 1999. That year, the county had 93,383 workers earning a first quarter payroll of \$574 million and annual payroll of \$2.3 billion. The Health Care and Social Assistance Industry employed 17,419 people – the highest number of paid employees – who earned an annual payroll of over \$476 billion. This was just short of the Manufacturing industry’s annual payroll, which topped \$494 billion. The Manufacturing industry had 15,324 paid employees, which was slightly less than the previous year. The Utilities industry took a huge leap in its average annual payroll per employee, which was more than \$50,000 per year; this is exactly double Lackawanna County’s average annual payroll per employee. Of the county’s 5,422 total business establishments, 1,012 (over 18%) were in the Retail Trade industry.

2000 Lackawanna County Number of Establishments by Employment-size class											
Code	Industry Code Description	Total Estb.	1-4	5-9	10-19	20-49	50-99	100-249	250-499	500-999	1000 or more
-----	Total	5,422	2,807	1,134	669	469	173	118	37	9	6
11----	Forestry, Fishing, Hunting, and Agriculture Support	3	3	0	0	0	0	0	0	0	0
21----	Mining	10	3	3	3	1	0	0	0	0	0
22----	Utilities	12	6	1	3	0	0	2	0	0	0
23----	Construction	512	330	107	42	26	4	3	0	0	0
31----	Manufacturing	293	90	42	42	47	35	23	12	0	2
42----	Wholesale Trade	273	115	65	45	31	12	5	0	0	0
44----	Retail Trade	1,012	437	271	167	92	24	16	5	0	0
48----	Transportation and Warehousing	131	67	21	13	20	6	4	0	0	0
51----	Information	86	35	16	8	11	6	6	3	1	0
52----	Finance and Insurance	324	159	87	45	18	9	3	2	1	0
53----	Real Estate and Rental and Leasing	148	86	36	21	4	1	0	0	0	0
54----	Professional, Scientific and Technical Services	401	251	82	38	24	5	1	0	0	0
55----	Management of Companies and Enterprises	23	3	6	4	5	2	1	1	1	0
56----	Admin, Support, Waste Mgt, Remediation Services	205	119	22	27	13	8	13	3	0	0
61----	Educational Services	52	15	4	10	12	4	1	3	2	1
62----	Health Care and Social Assistance	680	336	149	77	63	22	22	5	3	3
71----	Arts, Entertainment and Recreation	72	39	13	11	8	1	0	0	0	0
72----	Accommodation and Food Services	512	257	81	62	72	30	9	1	0	0
81----	Other Services (except public administration)	610	405	125	50	19	4	6	1	0	0
95----	Auxiliaries (exc corporate, subsidiary and regional)	10	1	1	1	2	0	3	1	1	0
99----	Unclassified Establishments	53	50	2	0	1	0	0	0	0	0

In 2000, 2,807 (51.7%) Lackawanna County business establishments employed between 1-4 people. Six of Lackawanna County's business establishments employed 1,000 or more people, half of which were in the Health Care and Social Assistance industry, and the remainder of which were in the Manufacturing and Educational Services industries.

Pennsylvania

2000 Pennsylvania Business Patterns					
Code	Industry Code Description	# of Employees for week including March 12	1st Quarter Payroll (\$1,000)	Annual Payroll (\$1,000)	Total Establishments
-----	Total	5,087,237	40,094,308	165,108,376	294,741
11----	Forestry, Fishing, Hunting, and Agriculture Support	2,909	14,938	61,307	636
21----	Mining	16,330	169,074	712,285	901
22----	Utilities	35,112	668,904	2,492,518	699
23----	Construction	254,421	2,035,381	9,454,025	28,455
31----	Manufacturing	798,333	7,442,158	30,576,146	16,762
42----	Wholesale Trade	243,026	2,560,741	10,287,390	16,796
44----	Retail Trade	668,251	2,997,110	12,555,971	48,518
48----	Transportation and Warehousing	163,210	1,210,221	5,256,808	6,889
51----	Information	135,135	1,654,410	6,368,921	4,916
52----	Finance and Insurance	280,315	3,700,664	13,953,478	17,358
53----	Real Estate and Rental and Leasing	67,356	462,316	1,981,664	8,640
54----	Professional, Scientific and Technical Services	295,444	3,594,938	15,576,644	26,830
55----	Management of Companies and Enterprises	142,691	2,571,495	9,233,149	2,011
56----	Admin, Support, Waste Mgt, Remediation Services	298,970	1,524,547	6,581,200	13,509
61----	Educational Services	196,127	1,204,179	4,977,182	2,700
62----	Health Care and Social Assistance	743,276	5,199,817	22,074,448	31,598
71----	Arts, Entertainment and Recreation	66,266	320,473	1,515,571	4,031
72----	Accommodation and Food Services	374,828	961,298	4,151,714	24,039
81----	Other Services (except public administration)	248,967	1,095,012	4,617,502	35,529
95----	Auxiliaries (exc corporate, subsidiary and regional mgt)	52,118	690,522	2,557,131	656
99----	Unclassified Establishments	4,152	16,110	123,322	3,268

In 2000, Pennsylvania had over 5 million paid employees in more than 294,500 business establishments. The estimated annual payroll was \$165 billion, which was over \$10.7 billion more than the prior year. The Manufacturing industry remained Pennsylvania's most employed and highest paid industry in 2000. However, its 798,333 workers were significantly less than nearly 810,000 workers recorded in 1999. The state's payroll was slightly higher for 2000, reaching over \$30.5 billion. The Health Care and Social Assistance industry had 743,276 employees earning an annual payroll of over \$22 billion; this industry was the state's second largest industry with the second highest annual payroll. The Utilities industry had the highest average annual payroll per employee, which topped \$70,000. The average annual payroll per employee for the entire state also grew to over \$32,000. The Retail Trade industry included 48,518 business establishments – the most in any Pennsylvania industry. The Professional, Scientific and Technical Services industry experienced a spike in employment – from 284,105 employees in 1999 to 295,444 in 2000. The Construction industry also grew rapidly, from 240,414 in 1999 employees to 254,421 in 2000.

2000 Pennsylvania Number of Establishments by Employment-size class											
Code	Industry Code Description	Total Estb.	1-4	5-9	10-19	20-49	50-99	100-249	250-499	500-999	1000 or more
-----	Total	294,741	152,171	60,254	38,721	26,143	9,311	5,714	1,510	599	318
11----	Forestry, Fishing, Hunting, and Agriculture Support	636	476	97	42	15	3	3	0	0	0
21----	Mining	901	373	178	169	118	39	16	6	2	0
22----	Utilities	699	240	112	97	102	58	61	16	10	3
23----	Construction	28,455	17,921	5,114	2,890	1,764	492	222	32	17	3
31----	Manufacturing	16,762	4,994	2,783	2,791	2,895	1,486	1,181	411	164	57
42----	Wholesale Trade	16,796	7,946	3,436	2,635	1,885	571	243	56	18	6
44----	Retail Trade	48,518	21,050	12,600	8,095	4,167	1,465	946	182	9	4
48----	Transportation and Warehousing	6,889	3,479	1,098	902	856	294	203	34	16	7
51----	Information	4,916	2,286	853	640	588	278	190	48	24	9
52----	Finance and Insurance	17,358	9,152	4,435	2,112	941	358	201	91	41	27
53----	Real Estate and Rental and Leasing	8,640	5,443	1,702	956	374	95	50	12	8	0
54----	Professional, Scientific and Technical Services	26,830	17,539	4,361	2,490	1,583	462	267	81	34	13
55----	Management of Companies and Enterprises	2,011	597	317	295	375	164	146	54	40	23
56----	Admin, Support, Waste Mgt, Remediation Services	13,509	7,502	2,223	1,396	1,174	553	468	135	40	18
61----	Educational Services	2,700	1,054	450	351	444	190	106	34	34	37
62----	Health Care and Social Assistance	31,598	13,931	7,777	4,989	2,826	866	794	213	108	94
71----	Arts, Entertainment and Recreation	4,031	2,166	629	491	453	186	80	17	6	3
72----	Accommodation and Food Services	24,039	10,529	4,120	3,789	3,895	1,302	356	37	8	3
81----	Other Services (except public administration)	35,529	22,277	7,700	3,434	1,573	386	127	27	3	2
95----	Auxiliaries (exc corporate, subsidiary and regional)	656	172	102	111	104	63	54	24	17	9
99----	Unclassified Establishments	3,268	3,044	167	46	11	0	0	0	0	0

Out of the 294,741 establishments in Pennsylvania in the year 2000, 152,171 employed between 1-4 people. Although the Retail Trade industry dropped a few hundred establishments from 1999, it remained the top industry with 48,518 total business establishments. With 31,598 total establishments, the Other Services (except public administration) industry ranked second, followed by the Health Care and Social Assistance industry, which had 31,598 total establishments. . Those industries employing 1,000 or more people totaled 318; 94 such industries were in the Health Care and Social Assistance industry and 57 were in the Manufacturing industry. Approximately 85% of all business establishments in Pennsylvania employed fewer than 20 people.

2001 BUSINESS PATTERNS

Luzerne County

2001 Luzerne County Business Patterns					
Code	Industry Code Description	# of Employees for week including March 12	1st Quarter Payroll (\$1,000)	Annual Payroll (\$1,000)	Total Establishments
-----	Total	127,970	799,240	3,286,880	7,580
11----	Forestry, Fishing, Hunting, and Agriculture Support	5	17	74	3
21----	Mining	283	2,309	9,699	18
22----	Utilities	1,335	15,199	64,427	23
23----	Construction	5,410	39,466	194,957	744
31----	Manufacturing	21,032	171,475	670,501	378
42----	Wholesale Trade	7,195	63,327	255,980	368
44----	Retail Trade	18,681	77,466	326,131	1,327
48----	Transportation and Warehousing	3,977	26,517	114,056	231
51----	Information	3,334	33,054	125,467	100
52----	Finance and Insurance	5,646	57,728	214,931	458
53----	Real Estate and Rental and Leasing	1,730	8,526	37,832	196
54----	Professional, Scientific and Technical Services	4,422	32,023	135,449	555
55----	Management of Companies and Enterprises	2,374	20,126	80,062	47
56----	Admin, Support, Waste Mgt, Remediation Services	10,340	37,529	160,057	390
61----	Educational Services	3,842	16,224	68,124	63
62----	Health Care and Social Assistance	19,795	135,570	575,219	925
71----	Arts, Entertainment and Recreation	1,466	4,545	20,336	79
72----	Accommodation and Food Services	10,217	23,762	101,334	712
81----	Other Services (except public administration)	4,488	16,984	72,803	914
95----	Auxiliaries (exc corporate, subsidiary and regional mgt)	2,362	17,283	58,893	17
99----	Unclassified Establishments	36	110	548	32

In 2001, Luzerne County recorded 127,970 paid employees in 7,580 business establishments – a decrease of 81 establishments from the prior year. The county’s first quarter payroll exceeded \$799 million and the annual payroll was well over \$3.2 billion – both figures pointing to a steady increase over the prior year. Although the highest employment level and annual payroll were in the Manufacturing industry, both decreased slightly from the prior year. The Manufacturing industry employed 21,032 people, which was 690 less than the prior year, and suffered a large decrease in annual payroll to just under \$671 million. The Health Care and Social Assistance Industry was the county’s second largest industry, with 19,795 employees and an annual payroll over more than \$575 million. The Utilities industry paid its employees the most per year, although the average annual salary dropped from \$49,204 in 2000 to \$48,259 in 2001. The same year, Pennsylvania’s average annual payroll increased by about \$700.

2001 Luzerne County Number of Establishments by Employment-size class											
Code	Industry Code Description	Total Estb.	1-4	5-9	10-19	20-49	50-99	100-249	250-499	500-999	1000 or more
-----	Total	7,580	3,926	1,580	967	647	230	161	44	19	6
11----	Forestry, Fishing, Hunting, and Agriculture Support	3	3	0	0	0	0	0	0	0	0
21----	Mining	18	5	4	5	2	2	0	0	0	0
22----	Utilities	23	5	5	3	2	4	2	2	0	0
23----	Construction	744	504	115	59	47	13	6	0	0	0
31----	Manufacturing	378	109	55	64	64	32	38	11	4	1
42----	Wholesale Trade	368	159	75	61	47	15	7	3	1	0
44----	Retail Trade	1,327	536	387	216	111	42	30	5	0	0
48----	Transportation and Warehousing	231	114	30	31	44	8	3	0	1	0
51----	Information	100	41	13	15	13	9	6	3	0	0
52----	Finance and Insurance	458	245	117	58	24	5	6	1	2	0
53----	Real Estate and Rental and Leasing	196	132	33	20	7	1	1	2	0	0
54----	Professional, Scientific and Technical Services	555	377	100	46	17	8	5	2	0	0
55----	Management of Companies and Enterprises	47	13	10	6	9	4	3	1	1	0
56----	Admin, Support, Waste Mgt, Remediation Services	390	220	54	42	38	14	14	5	1	2
61----	Educational Services	63	18	14	11	11	4	2	0	2	1
62----	Health Care and Social Assistance	925	413	232	149	70	22	26	6	5	2
71----	Arts, Entertainment and Recreation	79	37	15	8	11	6	1	1	0	0
72----	Accommodation and Food Services	712	337	120	106	103	36	10	0	0	0
81----	Other Services (except public administration)	914	626	194	64	24	5	1	0	0	0
95----	Auxiliaries (exc corporate, subsidiary and regional)	17	2	5	3	3	0	0	2	2	0
99----	Unclassified Establishments	32	30	2	0	0	0	0	0	0	0

Luzerne County's Retail Trade industry included the greatest number of business establishments at 1,327 - 48 less than the prior year. The Health Care and Social Assistance industry had the second greatest number of establishments at 925 – also a drop from 946 establishments in 2000. The Auxiliaries (18) industry and the Forestry, Fishing, Hunting and Agriculture Support (3) industry included the fewest number of business establishments. Those establishments employing between 1-4 people totaled 3,926, or nearly 52% of all business establishments. Similarly, only six total establishments in all industries employed 1,000 or more people.

Lackawanna County

2001 Lackawanna County Business Patterns					
Code	Industry Code Description	# of Employees for week including March 12	1st Quarter Payroll (\$1,000)	Annual Payroll (\$1,000)	Total Establishments
-----	Total	94,447	591,070	2,379,979	5,397
11----	Forestry, Fishing, Hunting, and Agriculture Support	8	42	185	4
21----	Mining	93	402	2,680	10
22----	Utilities	418	4,923	21,277	13
23----	Construction	2,925	20,586	99,042	500
31----	Manufacturing	16,649	132,716	485,079	302
42----	Wholesale Trade	3,637	28,839	113,412	264
44----	Retail Trade	13,476	53,656	229,486	1,021
48----	Transportation and Warehousing	2,226	14,858	60,237	137
51----	Information	3,792	28,684	113,106	79
52----	Finance and Insurance	4,710	49,120	173,196	324
53----	Real Estate and Rental and Leasing	749	3,618	15,369	149
54----	Professional, Scientific and Technical Services	2,644	21,422	100,685	414
55----	Management of Companies and Enterprises	1,506	13,602	52,669	26
56----	Admin, Support, Waste Mgt, Remediation Services	5,015	23,223	97,210	208
61----	Educational Services	5,501	30,867	113,759	53
62----	Health Care and Social Assistance	17,201	122,119	524,237	671
71----	Arts, Entertainment and Recreation	680	1,939	11,100	79
72----	Accommodation and Food Services	7,692	17,670	73,515	509
81----	Other Services (except public administration)	4,368	16,657	69,744	600
95----	Auxiliaries (exc corporate, subsidiary and regional mgt)	1,131	6,042	23,501	8
99----	Unclassified Establishments	26	85	490	26

In 2001, Lackawanna County recorded 94,447 people employed in 5,397 business establishments. Of the total workforce, 17,201 people were employed in the Health Care and Social Assistance industry - the highest employed occupation that year; this industry also recorded the annual payroll, which topped \$524 million. The Manufacturing industry ranked second in terms of employment and annual salary, with 6,649 workers earning a total of \$485 million. Together, these industries comprised a significant portion of Lackawanna's paid workforce and \$2.3 billion annual payroll. The Utilities industry remained the top for average payroll, at nearly \$51,000 per year.

2001 Lackawanna County Number of Establishments by Employment-size class											
Code	Industry Code Description	Total Estb.	1-4	5-9	10-19	20-49	50-99	100-249	250-499	500-999	1000 or more
-----	Total	5,397	2,789	1,105	679	479	174	122	32	12	5
11----	Forestry, Fishing, Hunting, and Agriculture Support	4	4	0	0	0	0	0	0	0	0
21----	Mining	10	4	1	4	1	0	0	0	0	0
22----	Utilities	13	7	1	3	0	0	2	0	0	0
23----	Construction	500	335	91	41	27	5	1	0	0	0
31----	Manufacturing	302	92	42	47	50	31	25	11	3	1
42----	Wholesale Trade	264	103	65	45	35	11	5	0	0	0
44----	Retail Trade	1,021	445	269	167	91	29	17	3	0	0
48----	Transportation and Warehousing	137	66	23	18	22	4	4	0	0	0
51----	Information	79	33	11	7	13	6	5	2	2	0
52----	Finance and Insurance	324	166	77	45	19	8	6	2	1	0
53----	Real Estate and Rental and Leasing	149	92	35	20	1	1	0	0	0	0
54----	Professional, Scientific and Technical Services	414	271	74	38	26	3	2	0	0	0
55----	Management of Companies and Enterprises	26	4	6	4	6	2	2	2	0	0
56----	Admin, Support, Waste Mgt, Remediation Services	208	113	24	29	13	11	16	2	0	0
61----	Educational Services	53	17	9	5	11	4	1	3	2	1
62----	Health Care and Social Assistance	671	322	157	74	67	22	18	5	3	3
71----	Arts, Entertainment and Recreation	79	48	9	12	8	2	0	0	0	0
72----	Accommodation and Food Services	509	248	87	64	70	29	10	1	0	0
81----	Other Services (except public administration)	600	393	122	56	18	5	5	1	0	0
95----	Auxiliaries (exc corporate, subsidiary and regional)	8	2	0	0	1	1	3	0	1	0
99----	Unclassified Establishments	26	24	2	0	0	0	0	0	0	0

In 2001, Lackawanna County had 5,397 business establishments, which was slightly less than the prior year. The Retail Trade industry held the greatest number of business establishments at 1,021. The majority of Lackawanna County's establishments (2,789) employed between 1-4 people. The fewest number of establishments (5) employed 1,000 or more people; the Health Care and Social Assistance industry fell into this category.

Pennsylvania

2001 Pennsylvania Business Patterns					
Code	Industry Code Description	# of Employees for week including March 12	1st Quarter Payroll (\$1,000)	Annual Payroll (\$1,000)	Total Establishments
-----	Total	5,123,111	42,599,480	169,850,265	295,096
11----	Forestry, Fishing, Hunting, and Agriculture Support	2,842	13,975	61,639	667
21----	Mining	16,775	182,043	765,142	932
22----	Utilities	35,275	682,407	2,465,042	740
23----	Construction	243,523	2,098,532	9,896,134	27,869
31----	Manufacturing	780,266	7,437,241	29,311,679	16,796
42----	Wholesale Trade	244,395	2,721,203	10,679,240	16,447
44----	Retail Trade	670,446	3,121,096	13,154,814	48,597
48----	Transportation and Warehousing	171,746	1,368,327	5,611,050	6,999
51----	Information	144,219	1,896,666	6,778,620	4,991
52----	Finance and Insurance	307,930	4,492,987	14,858,079	17,842
53----	Real Estate and Rental and Leasing	70,736	510,551	2,118,256	8,755
54----	Professional, Scientific and Technical Services	302,487	3,847,288	16,003,065	27,210
55----	Management of Companies and Enterprises	134,416	2,521,243	9,056,158	2,072
56----	Admin, Support, Waste Mgt, Remediation Services	294,291	1,648,714	6,933,411	14,071
61----	Educational Services	203,762	1,318,140	5,420,064	2,851
62----	Health Care and Social Assistance	758,225	5,575,045	23,374,551	31,713
71----	Arts, Entertainment and Recreation	68,900	365,185	1,712,085	4,144
72----	Accommodation and Food Services	367,312	987,616	4,237,861	24,144
81----	Other Services (except public administration)	252,533	1,145,544	4,771,540	35,279
95----	Auxiliaries (exc corporate, subsidiary and regional mgt)	49,993	653,918	2,567,990	651
99----	Unclassified Establishments	3,039	11,759	73,845	2,326

In 2001, the Commonwealth of Pennsylvania had over 5.1 million people employed in 295,096 business establishments, and an estimated annual payroll of more than \$169 billion. The Manufacturing industry had the highest employment level, with 780,266 workers; the industry also recorded the highest annual payroll of over \$29 billion. While the state's total employees and yearly earnings decreased slightly in 2001, the Manufacturing industry remained the state's top industry. With 758,225 workers and an annual payroll of \$23 billion, the Health Care and Social Assistance industry ranked second for employment and experienced an overall payroll increase. The Professional, Scientific and Technical Services industry had the state's third highest payroll at \$16 billion; the Retail Trade industry was Pennsylvania's third largest industry in terms of employment (670,446 workers) and total establishments (48,597).

2001 Pennsylvania Number of Establishments by Employment-size class											
Code	Industry Code Description	Total Estb.	1-4	5-9	10-19	20-49	50-99	100-249	250-499	500-999	1000 or more
-----	Total	295,096	152,252	60,271	38,619	26,415	9,328	5,776	1,515	592	328
11----	Forestry, Fishing, Hunting, and Agriculture Support	667	507	96	43	16	3	2	0	0	0
21----	Mining	932	409	182	154	119	44	16	5	3	0
22----	Utilities	740	262	110	101	107	73	59	13	12	3
23----	Construction	27,869	17,843	4,889	2,759	1,656	459	199	43	15	6
31----	Manufacturing	16,796	5,124	2,818	2,726	2,918	1,427	1,181	389	161	52
42----	Wholesale Trade	16,447	7,708	3,396	2,585	1,865	548	257	67	14	7
44----	Retail Trade	48,597	21,158	12,536	7,996	4,329	1,404	986	175	8	5
48----	Transportation and Warehousing	6,999	3,494	1,132	920	878	302	209	40	14	10
51----	Information	4,991	2,284	880	637	613	281	208	52	24	12
52----	Finance and Insurance	17,842	9,099	4,598	2,338	1,037	373	234	86	47	30
53----	Real Estate and Rental and Leasing	8,755	5,551	1,709	944	372	102	56	13	5	3
54----	Professional, Scientific and Technical Services	27,210	17,691	4,388	2,588	1,618	522	272	84	36	11
55----	Management of Companies and Enterprises	2,072	661	317	299	342	183	148	64	41	17
56----	Admin, Support, Waste Mgt, Remediation Services	14,071	7,957	2,252	1,459	1,192	577	450	125	41	18
61----	Educational Services	2,851	1,212	450	344	435	201	103	36	32	38
62----	Health Care and Social Assistance	31,713	14,085	7,647	4,896	2,960	893	804	225	107	96
71----	Arts, Entertainment and Recreation	4,144	2,274	627	483	454	184	94	16	7	5
72----	Accommodation and Food Services	24,144	10,710	4,171	3,777	3,820	1,301	321	35	6	3
81----	Other Services (except public administration)	35,279	21,870	7,843	3,447	1,566	389	134	24	3	3
95----	Auxiliaries (exc corporate, subsidiary and regional)	651	186	96	106	110	62	43	23	16	9
99----	Unclassified Establishments	2,326	2,167	134	17	8	0	0	0	0	0

Of Pennsylvania's 295,096 business establishments, 152,252 employed between 1-4 people. The majority of business establishments employed between 1-4 people, and included the Other Services (except public administration) industry (21,870 establishments), and the Retail Trade industry (21,158 establishments). Those establishments employing 1,000 or more people totaled 328 and largely fell into the Health Care and Social Assistance industry, which included 96 such establishments.

2002 BUSINESS PATTERNS

Luzerne County

2002 Luzerne County Business Patterns					
Code	Industry Code Description	# of Employees for week including March 12	1st Quarter Payroll (\$1,000)	Annual Payroll (\$1,000)	Total Establishments
-----	Total	124,838	806,807	3,348,498	7,634
11----	Forestry, Fishing, Hunting, and Agriculture Support	6	18	83	3
21----	Mining	181	1,714	7,615	14
22----	Utilities	1,301	15,687	67,391	26
23----	Construction	4,984	39,836	185,630	727
31----	Manufacturing	20,255	169,398	691,398	360
42----	Wholesale Trade	7,766	64,520	264,239	372
44----	Retail Trade	18,663	78,810	332,426	1,332
48----	Transportation and Warehousing	4,331	28,977	120,261	232
51----	Information	3,214	28,530	116,941	100
52----	Finance and Insurance	5,699	58,928	208,602	482
53----	Real Estate and Rental and Leasing	1,637	8,991	38,996	234
54----	Professional, Scientific and Technical Services	3,952	29,388	132,391	581
55----	Management of Companies and Enterprises	2,402	20,088	82,620	44
56----	Admin, Support, Waste Mgt, Remediation Services	6,279	28,359	126,114	362
61----	Educational Services	3,932	17,488	72,993	67
62----	Health Care and Social Assistance	20,420	147,475	618,604	923
71----	Arts, Entertainment and Recreation	1,229	3,498	16,875	83
72----	Accommodation and Food Services	11,556	29,987	122,216	718
81----	Other Services (except public administration)	4,699	17,897	78,387	934
95----	Auxiliaries (exc corporate, subsidiary and regional mgt)	2,323	17,192	64,245	15
99----	Unclassified Establishments	9	26	471	25

Luzerne County's total number of paid employees dropped to 124,838 in 2002 – which was 3,132 less than the prior year. However, the county did experience growth in its total number of business establishments, which reached 7,634 with a \$3.3 billion combined annual payroll. With 20,420 workers, the Health Care and Social Assistance industry surpassed Manufacturing as the industry with the greatest number of paid employees. The Health Care and Social Assistance industry also substantially increased its total annual payroll to \$618 million. In terms of paid employees, the Manufacturing (20,255) and Retail Trade (18,663) industries both experienced decreases from the prior year. Both industries, however, experienced increases in their annual payrolls, with Manufacturing reaching over \$691 million and Retail Trade reaching more than \$332 million. The Utilities industry paid the highest average annual payroll, at \$51,799 per employee.

2002 Luzerne County Number of Establishments by Employment-size class											
Code	Industry Code Description	Total Estb.	1-4	5-9	10-19	20-49	50-99	100-249	250-499	500-999	1000 or more
-----	Total	7,634	3,980	1,554	974	659	238	162	43	17	7
11----	Forestry, Fishing, Hunting, and Agriculture Support	3	3	0	0	0	0	0	0	0	0
21----	Mining	14	4	3	4	2	1	0	0	0	0
22----	Utilities	26	8	4	4	2	4	2	2	0	0
23----	Construction	727	508	102	55	44	13	5	0	0	0
31----	Manufacturing	360	106	58	49	61	29	38	14	3	2
42----	Wholesale Trade	372	166	72	63	41	17	8	3	2	0
44----	Retail Trade	1,332	569	352	219	115	43	29	5	0	0
48----	Transportation and Warehousing	232	104	35	33	44	10	5	0	1	0
51----	Information	100	41	14	18	9	9	6	3	0	0
52----	Finance and Insurance	482	252	124	68	24	7	4	1	2	0
53----	Real Estate and Rental and Leasing	234	161	43	22	4	2	0	2	0	0
54----	Professional, Scientific and Technical Services	581	393	106	48	20	8	6	0	0	0
55----	Management of Companies and Enterprises	44	11	5	6	12	5	3	1	1	0
56----	Admin, Support, Waste Mgt, Remediation Services	362	199	59	34	41	14	12	2	1	0
61----	Educational Services	67	24	13	9	11	5	2	0	1	2
62----	Health Care and Social Assistance	923	390	245	143	81	25	25	8	4	2
71----	Arts, Entertainment and Recreation	83	46	11	11	8	5	2	0	0	0
72----	Accommodation and Food Services	718	338	109	112	109	35	14	0	0	1
81----	Other Services (except public administration)	934	629	197	72	29	6	1	0	0	0
95----	Auxiliaries (exc corporate, subsidiary and regional)	15	3	2	4	2	0	0	2	2	0
99----	Unclassified Establishments	25	25	0	0	0	0	0	0	0	0

In 2002, the Retail Trade industry had Luzerne County's greatest number of business establishments (1,332), followed by the Other Services (except public administration) (934) and the Health Care and Social Assistance industry (923). Of all of Luzerne County's business establishments, 3,926 employed between 1-4 people; the Retail Trade industry held 17% of all business establishments, 596 of which employed between 1-4 people.

Lackawanna County

2002 Lackawanna County Business Patterns					
Code	Industry Code Description	# of Employees for week including March 12	1st Quarter Payroll (\$1,000)	Annual Payroll (\$1,000)	Total Establishments
-----	Total	90,351	562,675	2,358,481	5,336
11----	Forestry, Fishing, Hunting, and Agriculture Support	5	23	111	3
21----	Mining	89	304	2,115	8
22----	Utilities	384	4,723	20,208	10
23----	Construction	2,765	18,893	95,396	481
31----	Manufacturing	13,013	101,201	418,867	291
42----	Wholesale Trade	3,734	31,325	130,050	262
44----	Retail Trade	13,716	56,535	237,071	998
48----	Transportation and Warehousing	2,228	14,508	62,473	132
51----	Information	3,416	27,073	104,195	77
52----	Finance and Insurance	4,797	50,960	181,739	325
53----	Real Estate and Rental and Leasing	672	3,710	17,420	146
54----	Professional, Scientific and Technical Services	3,218	25,089	120,481	455
55----	Management of Companies and Enterprises	2,035	16,464	64,809	27
56----	Admin, Support, Waste Mgt, Remediation Services	3,944	18,379	79,294	204
61----	Educational Services	5,716	28,971	115,039	53
62----	Health Care and Social Assistance	16,927	123,345	534,676	674
71----	Arts, Entertainment and Recreation	691	1,932	11,407	74
72----	Accommodation and Food Services	7,630	16,926	71,067	503
81----	Other Services (except public administration)	4,337	16,811	69,896	594
95----	Auxiliaries (exc corporate, subsidiary and regional mgt)	1,023	5,470	21,971	7
99----	Unclassified Establishments	11	33	196	12

In 2002, the number of paid employees in Lackawanna County dropped by 4,096 to 90,351. The first quarter payroll decreased to about \$562.6 million and the annual payroll dropped to \$2.35 billion. There was also a loss of 61 business establishments, which totaled 5,336 for the year. Although the Health Care and Social Assistance continued to employ the greatest number of people, the Retail Trade industry surpassed the Manufacturing industry for second place. Also, the Health Care and Social Assistance industry surpassed the Manufacturing industry for the highest annual payroll. The Utilities industry continued to pay the highest average annual payroll per employee, which reached \$52,625. From 1998 to 2002, that grew by \$17,249.

2002 Lackawanna County Number of Establishments by Employment-size class											
Code	Industry Code Description	Total Estb.	1-4	5-9	10-19	20-49	50-99	100-249	250-499	500-999	1000 or more
-----	Total	5,336	2,739	1,113	661	495	167	117	30	9	5
11----	Forestry, Fishing, Hunting, and Agriculture Support	3	3	0	0	0	0	0	0	0	0
21----	Mining	8	3	0	4	1	0	0	0	0	0
22----	Utilities	10	3	2	3	0	1	1	0	0	0
23----	Construction	481	342	70	41	23	3	2	0	0	0
31----	Manufacturing	291	86	50	35	57	32	23	6	1	1
42----	Wholesale Trade	262	111	61	37	35	14	4	0	0	0
44----	Retail Trade	998	440	250	164	97	26	17	3	1	0
48----	Transportation and Warehousing	132	66	18	19	18	6	5	0	0	0
51----	Information	77	30	15	9	11	4	4	3	1	0
52----	Finance and Insurance	325	159	84	44	21	9	6	0	2	0
53----	Real Estate and Rental and Leasing	146	92	36	15	2	1	0	0	0	0
54----	Professional, Scientific and Technical Services	455	297	84	41	27	3	2	1	0	0
55----	Management of Companies and Enterprises	27	6	3	5	6	2	3	1	1	0
56----	Admin, Support, Waste Mgt, Remediation Services	204	106	33	21	21	8	15	0	0	0
61----	Educational Services	53	17	6	6	14	3	1	2	3	1
62----	Health Care and Social Assistance	674	313	159	86	65	22	15	11	0	3
71----	Arts, Entertainment and Recreation	74	46	7	11	7	3	0	0	0	0
72----	Accommodation and Food Services	503	221	105	69	71	26	10	1	0	0
81----	Other Services (except public administration)	594	386	129	50	19	3	6	1	0	0
95----	Auxiliaries (exc corporate, subsidiary and regional)	7	1	0	1	0	1	3	1	0	0
99----	Unclassified Establishments	12	11	1	0	0	0	0	0	0	0

Of Lackawanna County's 5,336 total establishments in 2002, the majority (998) were in the Retail Trade industry, followed by the Health Care and Social Assistance industry (674). There were 2,739 total establishments (51.3%) that employed between 1-4 people; the majority of all business establishments in all industries fell into this employment range. The Retail trade industry included 440 business establishments (44%) that employed between 1-4 people, while 342 of the Construction industry's 481 business establishments (71%) fell into this range. Three of the Health Care and Social Assistance industry's five business establishments employed 1,000 or more people.

Pennsylvania

2002 Pennsylvania Business Patterns					
Code	Industry Code Description	# of Employees for week including March 12	1st Quarter Payroll (\$1,000)	Annual Payroll (\$1,000)	Total Establishments
-----	Total	5,046,442	42,033,333	169,236,446	297,257
11----	Forestry, Fishing, Hunting, and Agriculture Support	3,413	18,471	77,865	674
21----	Mining	16,037	185,626	742,671	893
22----	Utilities	34,985	694,176	2,400,343	764
23----	Construction	243,151	2,186,287	9,993,468	27,920
31----	Manufacturing	710,581	6,920,926	27,869,819	16,399
42----	Wholesale Trade	239,897	2,601,458	10,399,206	16,272
44----	Retail Trade	669,379	3,159,783	13,228,771	48,444
48----	Transportation and Warehousing	164,682	1,327,228	5,438,506	7,239
51----	Information	146,715	1,853,418	6,922,960	5,149
52----	Finance and Insurance	312,018	4,211,605	14,565,786	18,477
53----	Real Estate and Rental and Leasing	66,423	490,610	2,110,195	9,111
54----	Professional, Scientific and Technical Services	284,647	3,554,935	14,780,725	28,466
55----	Management of Companies and Enterprises	139,367	2,480,422	9,026,580	2,013
56----	Admin, Support, Waste Mgt, Remediation Services	273,566	1,586,860	6,666,269	13,304
61----	Educational Services	201,321	1,351,945	5,594,513	2,932
62----	Health Care and Social Assistance	772,930	5,951,954	24,975,672	32,506
71----	Arts, Entertainment and Recreation	72,478	394,229	1,808,053	4,286
72----	Accommodation and Food Services	380,450	1,023,913	4,404,417	24,729
81----	Other Services (except public administration)	253,639	1,181,346	4,921,118	36,252
95----	Auxiliaries (exc corporate, subsidiary and regional mgt)	60,043	855,479	3,288,555	617
99----	Unclassified Establishments	720	2,662	20,954	810

In 2002, the Commonwealth of Pennsylvania had over five million people in its workforce, which was 76,669 less than the prior year. In fact, 2002 was the only year that Pennsylvania's annual payroll decreased from the prior year – which held true for the rest of the ten-year-period examined. Pennsylvania's annual payroll dropped from \$165.8 billion to \$165.2 billion in 2002. The Health Care and Social Assistance industry was the state's highest employed industry (772,930 workers), which surpassed Manufacturing (710,581 workers) for the first time. While the Manufacturing industry experienced a tremendous drop in employees, it experienced only a slight decrease in payroll. Nonetheless at over \$27.8 billion, the industry continued to have the state's highest annual payroll. The Professional, Scientific and Technical Services industry suffered a loss of 17,840 employees, but experienced a slight payroll increase. On the other hand, the Management of Companies and Enterprises industries grew to 139,367 employees from 2001, but had a slightly less annual payroll. The Retail Trade industry continued to hold the greatest number of business establishments (48,444). No industry experienced a significant change in total number of business establishments.

2002 Pennsylvania Number of Establishments by Employment-size class											
Code	Industry Code Description	Total Estb.	1-4	5-9	10-19	20-49	50-99	100-249	250-499	500-999	1000 or more
-----	Total	297,257	153,076	61,032	39,297	26,667	9,294	5,575	1,434	561	321
11----	Forestry, Fishing, Hunting, and Agriculture Support	674	511	87	54	13	5	4	0	0	0
21----	Mining	893	376	167	168	114	52	9	1	6	0
22----	Utilities	764	290	114	108	103	69	49	16	12	3
23----	Construction	27,920	18,158	4,692	2,753	1,600	447	212	37	15	6
31----	Manufacturing	16,399	5,212	2,829	2,693	2,723	1,328	1,073	354	138	49
42----	Wholesale Trade	16,272	7,892	3,259	2,487	1,793	522	238	56	17	8
44----	Retail Trade	48,444	20,957	12,542	8,033	4,369	1,386	978	159	16	4
48----	Transportation and Warehousing	7,239	3,772	1,108	917	860	324	204	30	16	8
51----	Information	5,149	2,351	933	647	629	294	209	53	22	11
52----	Finance and Insurance	18,477	9,468	4,747	2,378	1,148	334	234	93	45	30
53----	Real Estate and Rental and Leasing	9,111	5,797	1,790	975	398	76	56	15	4	0
54----	Professional, Scientific and Technical Services	28,466	18,608	4,494	2,720	1,754	522	242	90	30	6
55----	Management of Companies and Enterprises	2,013	630	319	280	340	182	140	60	42	20
56----	Admin, Support, Waste Mgt, Remediation Services	13,304	7,522	2,075	1,381	1,201	592	370	106	40	17
61----	Educational Services	2,932	1,193	467	380	476	195	118	34	31	38
62----	Health Care and Social Assistance	32,506	13,926	8,144	5,190	3,074	926	821	230	93	102
71----	Arts, Entertainment and Recreation	4,286	2,345	662	506	440	208	93	21	7	4
72----	Accommodation and Food Services	24,729	10,690	4,356	3,931	3,961	1,412	338	31	7	3
81----	Other Services (except public administration)	36,252	22,460	8,124	3,573	1,562	360	149	21	1	2
95----	Auxiliaries (exc corporate, subsidiary and regional)	617	149	98	110	106	60	38	27	19	10
99----	Unclassified Establishments	810	769	25	13	3	0	0	0	0	0

Of Pennsylvania's total business establishments, 152,076 (51.5%) employed between 1-4 people. While the Retail Trade industry had the greatest number of establishments, most establishments employing between 1-4 people were in the Other Services (except public administration) industry (22,460). There were 321 business establishments that employed 1,000 or more people, and those establishments largely fell into the Health Care and Social Assistance (102) and Manufacturing (49) industries. It is important to note that this was the last year in which industry code 95 (Auxiliaries) appeared. From 2003-2007, the state posted 20 total industries, rather than 21.

2003 BUSINESS PATTERNS

Luzerne County

2003 Luzerne County Business Patterns					
Code	Industry Code Description	# of Employees for week including March 12	1st Quarter Payroll (\$1,000)	Annual Payroll (\$1,000)	Total Establishments
-----	Total	123,599	825,594	3,502,182	7,599
11----	Forestry, Fishing, Hunting, and Agriculture Support	0-19	D	D	1
21----	Mining	1,348	19,180	89,138	18
22----	Utilities	1,319	17,871	78,798	27
23----	Construction	4,956	38,542	195,986	731
31----	Manufacturing	19,856	177,053	722,162	350
42----	Wholesale Trade	6,243	52,968	215,123	353
44----	Retail Trade	18,265	79,614	342,202	1,310
48----	Transportation and Warehousing	6,316	40,856	178,574	250
51----	Information	3,524	35,152	137,226	122
52----	Finance and Insurance	5,257	51,052	196,201	473
53----	Real Estate and Rental and Leasing	1,520	9,814	43,870	223
54----	Professional, Scientific and Technical Services	4,475	39,542	157,917	594
55----	Management of Companies and Enterprises	2,314	20,645	89,452	46
56----	Admin, Support, Waste Mgt, Remediation Services	6,410	30,419	145,300	365
61----	Educational Services	3,888	17,797	75,327	67
62----	Health Care and Social Assistance	20,912	146,896	629,150	922
71----	Arts, Entertainment and Recreation	1,845	5,063	23,252	87
72----	Accommodation and Food Services	10,669	25,977	110,180	731
81----	Other Services (except public administration)	4,452	17,029	71,893	910
99----	Unclassified Establishments	20-99	D	D	19

Although not as significant as in the prior year, in 2003 Luzerne County's number of paid employees dropped number of paid employees to 123,599. This marked Luzerne County's only consecutive decline in employees. Nonetheless, the county's annual payroll increased to over \$3.5 billion in 2003. For the second year in a row, the Health Care and Social Assistance industry held the highest number of paid employees (20,912), and it increased its annual payroll to over \$629 million. Similar to the prior year, the Manufacturing and Retail Trade industries lost employees, but increased their annual payrolls to \$722 million and \$342 million, respectively. This was the first year in Luzerne County that the Utility industry did not rank first for highest average annual payroll; in 2003, the Mining industry took the top spot, paying its employees an average annual payroll of \$66,126.

2003 Luzerne County Number of Establishments by Employment-size class											
Code	Industry Code Description	Total Estb.	1-4	5-9	10-19	20-49	50-99	100-249	250-499	500-999	1000 or more
-----	Total	7,599	3,951	1,551	968	681	220	167	37	21	3
11----	Forestry, Fishing, Hunting, and Agriculture Support	1	1	0	0	0	0	0	0	0	0
21----	Mining	18	4	3	7	1	1	0	1	1	0
22----	Utilities	27	5	7	3	4	5	1	2	0	0
23----	Construction	731	518	98	51	48	10	6	0	0	0
31----	Manufacturing	350	101	53	47	64	29	40	11	4	1
42----	Wholesale Trade	353	157	72	63	39	13	6	1	2	0
44----	Retail Trade	1,310	544	363	205	127	40	27	4	0	0
48----	Transportation and Warehousing	250	111	40	32	42	14	7	1	3	0
51----	Information	122	45	21	21	16	9	7	3	0	0
52----	Finance and Insurance	473	250	133	58	23	3	4	0	2	0
53----	Real Estate and Rental and Leasing	223	148	44	20	7	2	1	1	0	0
54----	Professional, Scientific and Technical Services	594	412	95	56	14	11	5	1	0	0
55----	Management of Companies and Enterprises	46	12	6	10	7	6	2	3	0	0
56----	Admin, Support, Waste Mgt, Remediation Services	365	197	63	44	34	9	16	1	1	0
61----	Educational Services	67	22	13	10	13	4	2	0	3	0
62----	Health Care and Social Assistance	922	406	214	152	87	21	29	6	5	2
71----	Arts, Entertainment and Recreation	87	44	15	11	8	6	1	2	0	0
72----	Accommodation and Food Services	731	331	126	112	116	34	12	0	0	0
81----	Other Services (except public administration)	910	626	184	65	31	3	1	0	0	0
99----	Unclassified Establishments	19	17	1	1	0	0	0	0	0	0

In 2003, Luzerne County recorded 7,599 total business establishments – which was 35 less than in 2002. Establishments in the Retail Trade industry dropped to 1,310. A few other industries experienced mild decrease in total business establishments including the Other Services (except public administration) industry, which dropped low enough to allow the Health Care and Social Assistance industry to surpass it as the industry with the second greatest number of business establishments. The Information and Professional, Scientific and Technical industries were among the industries that grew in 2003, while the number of establishments in the Educational Services industry remained the same at 67, and the Health Care and Social Assistance industry grew by just one over the prior year. There was a sharp decrease in the number of business establishments that employed 1,000 or more people – a drop from seven in 2002 to just four in 2003.

Lackawanna County

2003 Lackawanna County Business Patterns					
Code	Industry Code Description	# of Employees for week including March 12	1st Quarter Payroll (\$1,000)	Annual Payroll (\$1,000)	Total Establishments
-----	Total	90,855	578,323	2,435,516	5,336
11----	Forestry, Fishing, Hunting, and Agriculture Support	7	35	150	5
21----	Mining	73	294	2,344	9
22----	Utilities	370	4,964	21,641	13
23----	Construction	2,641	17,714	91,186	499
31----	Manufacturing	12,674	106,258	432,435	273
42----	Wholesale Trade	3,937	34,273	138,490	254
44----	Retail Trade	13,693	56,189	239,487	986
48----	Transportation and Warehousing	3,827	24,864	105,828	133
51----	Information	2,068	17,518	67,967	82
52----	Finance and Insurance	5,935	58,971	213,950	321
53----	Real Estate and Rental and Leasing	828	4,006	20,014	146
54----	Professional, Scientific and Technical Services	2,956	24,785	115,093	440
55----	Management of Companies and Enterprises	1,752	13,396	56,102	29
56----	Admin, Support, Waste Mgt, Remediation Services	4,718	20,741	89,844	203
61----	Educational Services	5,825	29,742	117,984	51
62----	Health Care and Social Assistance	17,086	127,212	560,588	685
71----	Arts, Entertainment and Recreation	587	1,991	11,417	69
72----	Accommodation and Food Services	7,719	19,088	82,707	529
81----	Other Services (except public administration)	4,149	16,253	68,080	595
99----	Unclassified Establishments	10	29	209	14

In 2003, Lackawanna County recorded 90,855 paid employees and an annual payroll of more than \$2.4 billion. A large percentage of that increase came from the Health Care and Social Assistance industry – where the annual payroll grew to over \$560.5 million and the number of employees to 17,086. It is important to watch the evolution of the smaller industries as well as the large. A field that hadn't been on the top of the payroll or employee count was Finance and Insurance; this industry gained 1,138 employees in 2003, while its payroll increased almost 18% from 2002. The Manufacturing and Retail Trade industries both experienced declines in number of paid employees, but annual payroll increases. The Manufacturing industry included 12,674 workers who earned an annual payroll of more than \$432 million, while the Retail Trade industry had 13,693 workers who earned an annual payroll of more than \$239 million.

2003 Lackawanna County Number of Establishments by Employment-size class											
Code	Industry Code Description	Total Estb.	1-4	5-9	10-19	20-49	50-99	100-249	250-499	500-999	1000 or more
-----	Total	5,336	2,716	1,111	665	527	158	115	28	11	5
11----	Forestry, Fishing, Hunting, and Agriculture Support	5	5	0	0	0	0	0	0	0	0
21----	Mining	9	4	2	2	1	0	0	0	0	0
22----	Utilities	13	7	1	3	0	1	1	0	0	0
23----	Construction	499	339	86	40	31	3	0	0	0	0
31----	Manufacturing	273	78	43	41	46	31	27	5	1	1
42----	Wholesale Trade	254	102	57	37	43	10	4	1	0	0
44----	Retail Trade	986	419	275	147	93	30	19	2	1	0
48----	Transportation and Warehousing	133	61	21	20	17	5	7	0	2	0
51----	Information	82	39	13	10	10	5	4	1	0	0
52----	Finance and Insurance	321	154	77	49	24	8	5	1	3	0
53----	Real Estate and Rental and Leasing	146	92	33	15	5	1	0	0	0	0
54----	Professional, Scientific and Technical Services	440	286	79	37	32	4	2	0	0	0
55----	Management of Companies and Enterprises	29	8	4	3	8	0	4	2	0	0
56----	Admin, Support, Waste Mgt, Remediation Services	203	111	31	20	16	11	11	2	1	0
61----	Educational Services	51	10	7	11	13	3	1	2	3	1
62----	Health Care and Social Assistance	685	314	162	87	72	20	18	9	0	3
71----	Arts, Entertainment and Recreation	69	44	5	8	11	1	0	0	0	0
72----	Accommodation and Food Services	529	241	98	72	85	24	8	1	0	0
81----	Other Services (except public administration)	595	389	116	63	20	1	4	2	0	0
99----	Unclassified Establishments	14	13	1	0	0	0	0	0	0	0

Like from 1998-1999, from 2002-2003, Lackawanna County's total number of business establishments remained exactly the same. While Retail Trade continued to have the greatest number of total establishments, that figure dropped to 986. Business establishments employing 1,000 or more people included (5) were dominated by the Health Care and Social Assistance industry (3); the other two fell into the Educational Services and Manufacturing industries.

Pennsylvania

2003 Pennsylvania Business Patterns					
Code	Industry Code Description	# of Employees for week including March 12	1st Quarter Payroll (\$1,000)	Annual Payroll (\$1,000)	Total Establishments
-----	Total	5,029,324	42,852,594	174,513,098	298,081
11----	Forestry, Fishing, Hunting, and Agriculture Support	3,127	18,085	77,968	619
21----	Mining	18,007	217,657	924,663	900
22----	Utilities	34,708	722,926	2,548,468	756
23----	Construction	233,583	2,090,253	9,985,069	28,648
31----	Manufacturing	682,547	6,743,187	27,205,038	16,185
42----	Wholesale Trade	242,422	2,814,050	11,281,914	15,848
44----	Retail Trade	659,804	3,158,110	13,376,874	47,589
48----	Transportation and Warehousing	184,118	1,434,160	5,974,645	7,503
51----	Information	140,551	1,834,252	6,862,246	5,244
52----	Finance and Insurance	311,556	4,489,768	15,948,942	18,852
53----	Real Estate and Rental and Leasing	66,835	502,597	2,134,870	9,237
54----	Professional, Scientific and Technical Services	305,644	4,157,622	17,169,141	28,741
55----	Management of Companies and Enterprises	135,457	2,793,142	10,222,317	1,939
56----	Admin, Support, Waste Mgt, Remediation Services	287,896	1,663,768	7,197,889	13,523
61----	Educational Services	204,266	1,327,585	5,717,359	3,047
62----	Health Care and Social Assistance	800,789	6,183,260	26,368,057	32,864
71----	Arts, Entertainment and Recreation	76,292	419,566	1,876,813	4,460
72----	Accommodation and Food Services	396,187	1,101,395	4,700,045	25,343
81----	Other Services (except public administration)	244,509	1,178,107	4,924,166	35,884
99----	Unclassified Establishments	1,026	3,104	16,614	899

Pennsylvania's total number of paid employees totaled just over 5 million. Pennsylvania workers were employed by 298,081 business establishments, with an annual payroll of more than \$174 billion. The Health Care and Social Assistance industry was highest employed industry, and experienced a significant increase in employees to 800,789; the industry's annual payroll reached \$26.3 billion – just short of the industry with the highest payroll. At \$27.2 billion in annual payroll, the Manufacturing industry paid its workers the most. In 2003 the Manufacturing industry employed 682,547 people, which was 28,034 less than the prior year. An unexpected payroll increase occurred in the Mining industry; while its employment level remained relatively the same between the two years, annual payroll skyrocketed by about 24% to over \$924.6 million. The Professional, Scientific and Technical Services industry also showed signs of development. One of the biggest changes came in average annual payroll per employee, which reached over \$73,000 in two industries – Utilities and the Management of Companies and Enterprises. Employees in these industries earned more than twice the state average annual payroll per employee.

2003 Pennsylvania Number of Establishments by Employment-size class											
Code	Industry Code Description	Total Estb.	1-4	5-9	10-19	20-49	50-99	100-249	250-499	500-999	1000 or more
-----	Total	298,081	154,213	60,648	39,276	26,713	9,315	5,576	1,432	602	306
11----	Forestry, Fishing, Hunting, and Agriculture Support	619	468	93	33	16	4	5	0	0	0
21----	Mining	900	389	173	146	118	51	12	5	6	0
22----	Utilities	756	269	129	112	101	66	48	15	13	3
23----	Construction	28,648	18,811	4,806	2,739	1,591	436	205	43	14	3
31----	Manufacturing	16,185	5,066	2,826	2,662	2,756	1,293	1,071	333	139	39
42----	Wholesale Trade	15,848	7,675	3,183	2,440	1,732	495	236	60	19	8
44----	Retail Trade	47,589	20,492	12,509	7,689	4,339	1,409	989	139	20	3
48----	Transportation and Warehousing	7,503	3,765	1,184	946	882	400	240	44	30	12
51----	Information	5,244	2,425	942	665	619	309	197	51	26	10
52----	Finance and Insurance	18,852	9,676	4,942	2,394	1,109	326	223	86	68	28
53----	Real Estate and Rental and Leasing	9,237	5,890	1,720	1,065	413	85	50	11	3	0
54----	Professional, Scientific and Technical Services	28,741	18,840	4,463	2,846	1,676	530	247	84	39	16
55----	Management of Companies and Enterprises	1,939	563	269	303	359	188	134	64	36	23
56----	Admin, Support, Waste Mgt, Remediation Services	13,523	7,677	2,081	1,443	1,198	570	379	115	39	21
61----	Educational Services	3,047	1,242	468	419	493	215	105	39	35	31
62----	Health Care and Social Assistance	32,864	14,174	7,967	5,269	3,197	968	834	257	97	101
71----	Arts, Entertainment and Recreation	4,460	2,533	658	501	447	185	100	24	6	6
72----	Accommodation and Food Services	25,343	11,019	4,378	4,007	4,102	1,425	363	40	8	1
81----	Other Services (except public administration)	35,884	22,395	7,815	3,585	1,564	360	138	22	4	1
99----	Unclassified Establishments	899	844	42	12	1	0	0	0	0	0

Pennsylvania's Retail Trade industry included 47,589 business establishments, which was number one, but gradually declining each year. With 154,213 of all business establishments (51.7%) employing between 1-4 people, the pattern of a greater number of establishments employing the fewest number of people continued. Those establishments employing 1,000 or more people remained about the same from 2002 to 2003.

2004 BUSINESS PATTERNS

Luzerne County

2004 Luzerne County Business Patterns					
Code	Industry Code Description	# of Employees for week including March 12	1st Quarter Payroll (\$1,000)	Annual Payroll (\$1,000)	Total Establishments
-----	Total	125,682	845,596	3,605,352	7,711
11----	Forestry, Fishing, Hunting, and Agriculture Support	0-19	D	D	1
21----	Mining	1,248	15,973	82,800	21
22----	Utilities	1,077	14,411	61,987	26
23----	Construction	5,236	40,597	201,375	728
31----	Manufacturing	19,526	172,547	699,144	349
42----	Wholesale Trade	6,238	54,064	225,452	352
44----	Retail Trade	19,700	86,086	364,555	1,317
48----	Transportation and Warehousing	6,986	43,206	189,989	250
51----	Information	4,244	43,971	157,276	133
52----	Finance and Insurance	5,271	52,461	211,505	468
53----	Real Estate and Rental and Leasing	1,498	8,638	40,887	226
54----	Professional, Scientific and Technical Services	4,452	39,314	162,954	614
55----	Management of Companies and Enterprises	1,889	22,381	86,081	48
56----	Admin, Support, Waste Mgt, Remediation Services	6,249	28,884	147,339	370
61----	Educational Services	3,757	18,756	80,202	81
62----	Health Care and Social Assistance	20,911	152,463	671,209	977
71----	Arts, Entertainment and Recreation	1,716	5,506	25,765	90
72----	Accommodation and Food Services	10,962	27,301	115,882	741
81----	Other Services (except public administration)	4,691	18,971	80,527	899
99----	Unclassified Establishments	20-99	D	D	20

Luzerne County experienced an increase of 2,083 workers in 2004, with the 125,683 paid employees earning an annual payroll of \$3.6 billion. The Health Care and Social Assistance industry had essentially the same number of employees from 2003 (20,911), and had the second highest annual payroll at \$671.2 million. The industry's payroll was rapidly increasing, although it remained behind the Manufacturing industry in 2004. At \$699.1 million, the Manufacturing industry had the highest annual payroll, which was on a pattern of decline. The Retail Trade industry surpassed the manufacturing industry with 19,700 employees – an increase of 1,435 over 2003.

2004 Luzerne County Number of Establishments by Employment-size class											
Code	Industry Code Description	Total Estb.	1-4	5-9	10-19	20-49	50-99	100-249	250-499	500-999	1000 or more
-----	Total	7,711	4,002	1,580	945	714	236	168	44	18	4
11----	Forestry, Fishing, Hunting, and Agriculture Support	1	1	0	0	0	0	0	0	0	0
21----	Mining	21	6	4	5	3	1	0	1	1	0
22----	Utilities	26	9	2	6	1	5	2	1	0	0
23----	Construction	728	495	115	47	52	14	5	0	0	0
31----	Manufacturing	349	97	57	52	57	32	39	10	4	1
42----	Wholesale Trade	352	157	73	61	38	11	9	2	1	0
44----	Retail Trade	1,317	566	334	188	151	44	28	5	1	0
48----	Transportation and Warehousing	250	106	38	36	43	16	6	2	2	1
51----	Information	133	56	19	22	16	10	6	3	1	0
52----	Finance and Insurance	468	243	140	51	24	3	5	0	2	0
53----	Real Estate and Rental and Leasing	226	150	48	21	3	2	1	1	0	0
54----	Professional, Scientific and Technical Services	614	422	107	53	16	11	4	1	0	0
55----	Management of Companies and Enterprises	48	14	8	9	6	8	1	2	0	0
56----	Admin, Support, Waste Mgt, Remediation Services	370	210	59	43	32	9	13	4	0	0
61----	Educational Services	81	32	16	7	17	4	2	0	3	0
62----	Health Care and Social Assistance	977	426	230	152	100	27	27	10	3	2
71----	Arts, Entertainment and Recreation	90	46	11	16	9	5	1	2	0	0
72----	Accommodation and Food Services	741	336	130	107	120	32	16	0	0	0
81----	Other Services (except public administration)	899	611	189	68	26	2	3	0	0	0
99----	Unclassified Establishments	20	19	0	1	0	0	0	0	0	0

Of Luzerne County's 7,711 business establishments, 1,317 (17%) were in the Retail Trade industry. The Health Care and Social Assistance had the second greatest number of establishments (977). The Retail Trade industry experienced an increase in the number of establishments employing between 1-4 people (566). The Professional, Scientific, and Technical Services, Educational Services, and Health Care and Social Assistance industries experienced significant increases in the number of establishments employing between 1-4 people. Just four establishments employed 1,000 or more people, two of which were in the Health Care and Social Assistance industry.

Lackawanna County

2004 Lackawanna County Business Patterns					
Code	Industry Code Description	# of Employees for week including March 12	1st Quarter Payroll (\$1,000)	Annual Payroll (\$1,000)	Total Establishments
-----	Total	95,887	619,075	2,677,704	5,440
11----	Forestry, Fishing, Hunting, and Agriculture Support	5	22	131	4
21----	Mining	87	369	2,771	8
22----	Utilities	240-499	D	D	11
23----	Construction	2,738	19,251	99,289	489
31----	Manufacturing	12,871	103,117	436,399	262
42----	Wholesale Trade	4,271	37,581	156,701	264
44----	Retail Trade	14,225	59,368	252,952	991
48----	Transportation and Warehousing	3,929	26,628	114,124	141
51----	Information	3,812	43,775	188,102	78
52----	Finance and Insurance	7,114	62,349	236,497	332
53----	Real Estate and Rental and Leasing	852	4,422	20,773	148
54----	Professional, Scientific and Technical Services	3,169	26,045	130,987	459
55----	Management of Companies and Enterprises	1,571	12,738	56,277	28
56----	Admin, Support, Waste Mgt, Remediation Services	4,805	21,008	95,737	205
61----	Educational Services	5,892	30,576	121,195	53
62----	Health Care and Social Assistance	17,417	130,661	585,359	715
71----	Arts, Entertainment and Recreation	687	2,212	13,045	77
72----	Accommodation and Food Services	8,227	19,662	82,311	530
81----	Other Services (except public administration)	3,897	14,796	65,290	597
99----	Unclassified Establishments	0-19	D	D	48

In 2004, Lackawanna County's number of paid employees increased greatly. With 95,887 employees and an annual payroll well over \$2.6 billion, Lackawanna County business establishments performed well in 2004. The Health Care and Social Assistance industry included 17,417 paid employees who earned over \$585.3 million annually – more than a 4% increase over 2003. The Manufacturing and Retail Trade industries also expanded in 2004; the Retail Trade industry had 14,225 employees with an annual payroll of nearly \$252.3 million, and the Manufacturing industry included 12,871 workers earning more than \$436.3 million annually.

2004 Lackawanna County Number of Establishments by Employment-size class											
Code	Industry Code Description	Total Estb.	1-4	5-9	10-19	20-49	50-99	100-249	250-499	500-999	1000 or more
-----	Total	5,440	2,763	1,136	695	512	173	112	30	13	6
11----	Forestry, Fishing, Hunting, and Agriculture Support	4	4	0	0	0	0	0	0	0	0
21----	Mining	8	3	1	3	1	0	0	0	0	0
22----	Utilities	11	5	3	1	1	0	1	0	0	0
23----	Construction	489	340	77	39	29	3	1	0	0	0
31----	Manufacturing	262	67	46	42	48	29	22	5	2	1
42----	Wholesale Trade	264	119	48	44	34	12	6	1	0	0
44----	Retail Trade	991	403	268	163	99	39	17	1	1	0
48----	Transportation and Warehousing	141	55	30	24	18	6	4	3	1	0
51----	Information	78	37	13	9	9	2	5	2	0	1
52----	Finance and Insurance	332	165	84	45	18	8	7	0	5	0
53----	Real Estate and Rental and Leasing	148	97	28	18	3	2	0	0	0	0
54----	Professional, Scientific and Technical Services	459	302	82	39	29	4	3	0	0	0
55----	Management of Companies and Enterprises	28	7	4	2	9	1	3	2	0	0
56----	Admin, Support, Waste Mgt, Remediation Services	205	109	31	26	15	13	8	2	1	0
61----	Educational Services	53	15	5	8	14	3	2	2	3	1
62----	Health Care and Social Assistance	715	323	173	95	70	21	20	10	0	3
71----	Arts, Entertainment and Recreation	77	50	6	11	7	3	0	0	0	0
72----	Accommodation and Food Services	530	235	99	73	87	26	9	1	0	0
81----	Other Services (except public administration)	597	381	136	53	21	1	4	1	0	0
99----	Unclassified Establishments	48	46	2	0	0	0	0	0	0	0

In 2004, Lackawanna County's Retail Trade industry also experienced slight growth in the number of business establishments, and, with 991 total establishments, was the county's top industry. The Health Care and Social Assistance industry followed, with 715 business establishments – up 30 from 2003. . Of the county's 5,440 total business establishments, 2,763 (50.7%) employed between 1-4 people. In the Retail Trade Industry, 403 of 991 business establishments fell into this employment range. The Health Care and Social Assistance and Other Services (except public administration) industries ranked second and third, respectively, in terms of size by number of establishments. Six business establishments employed 1,000 or more people; three were in the Health Care and Social Assistance industry, and the remaining three were in the Manufacturing, Educational Services and Information industries.

Pennsylvania

2004 Pennsylvania Business Patterns					
Code	Industry Code Description	# of Employees for week including March 12	1st Quarter Payroll (\$1,000)	Annual Payroll (\$1,000)	Total Establishments
-----	Total	5,107,044	44,115,618	181,784,478	301,557
11----	Forestry, Fishing, Hunting, and Agriculture Support	2,905	16,486	73,710	609
21----	Mining	19,282	230,847	1,024,457	887
22----	Utilities	32,833	720,165	2,517,988	716
23----	Construction	256,193	2,269,692	10,729,128	29,377
31----	Manufacturing	667,829	6,709,375	27,930,501	15,915
42----	Wholesale Trade	245,044	2,896,414	11,987,747	15,818
44----	Retail Trade	678,236	3,255,113	13,898,143	47,430
48----	Transportation and Warehousing	193,413	1,507,598	6,271,865	7,688
51----	Information	139,128	1,930,370	6,974,228	5,239
52----	Finance and Insurance	299,033	4,605,991	16,197,060	19,059
53----	Real Estate and Rental and Leasing	67,213	528,154	2,275,950	9,472
54----	Professional, Scientific and Technical Services	308,253	4,225,196	17,757,464	29,279
55----	Management of Companies and Enterprises	140,048	2,941,675	10,843,817	1,921
56----	Admin, Support, Waste Mgt, Remediation Services	290,143	1,649,003	7,363,540	13,822
61----	Educational Services	214,795	1,411,481	6,086,635	3,112
62----	Health Care and Social Assistance	822,824	6,486,474	28,073,329	33,419
71----	Arts, Entertainment and Recreation	76,259	389,064	1,840,787	4,664
72----	Accommodation and Food Services	403,150	1,113,597	4,777,797	25,749
81----	Other Services (except public administration)	248,940	1,223,788	5,132,493	36,183
99----	Unclassified Establishments	1,523	5,135	27,839	1,198

In 2004, just about every Pennsylvania industry either leveled off or experienced slight growth. The state recorded 5.1 million employees working in 301,557 business establishments, which was similar to 2003. The first quarter payroll was \$44 billion, while the annual payroll reached \$181 billion. A noteworthy change took place as the Health Care and Social Assistance industry surpassed the Manufacturing industry for highest annual payroll. At \$28.0 billion, the Health Care and Social Assistance industry cleared the Manufacturing industry's \$27.9 billion annual payroll. The Utilities and Management of Companies and Enterprises industries both increased their average annual payroll per employee by about \$3,000 each. These are significant per person annual increases, which will continue to grow as years pass.

2004 Pennsylvania Number of Establishments by Employment-size class											
Code	Industry Code Description	Total Estb.	1-4	5-9	10-19	20-49	50-99	100-249	250-499	500-999	1000 or more
-----	Total	301,557	156,139	61,282	39,447	27,113	9,601	5,613	1,463	587	312
11----	Forestry, Fishing, Hunting, and Agriculture Support	609	462	79	46	15	5	2	0	0	0
21----	Mining	887	365	176	149	117	56	12	6	6	0
22----	Utilities	716	246	127	110	91	63	50	15	11	3
23----	Construction	29,377	19,069	4,962	2,880	1,719	466	217	51	9	4
31----	Manufacturing	15,915	4,999	2,753	2,649	2,683	1,302	1,043	305	140	41
42----	Wholesale Trade	15,818	7,661	3,125	2,415	1,748	532	252	62	15	8
44----	Retail Trade	47,430	20,254	12,165	7,698	4,669	1,494	978	148	22	2
48----	Transportation and Warehousing	7,688	3,922	1,129	1,017	893	381	245	52	35	14
51----	Information	5,239	2,518	919	675	568	287	181	54	28	9
52----	Finance and Insurance	19,059	10,021	4,978	2,269	1,076	325	216	82	62	30
53----	Real Estate and Rental and Leasing	9,472	6,069	1,837	1,005	398	101	47	12	3	0
54----	Professional, Scientific and Technical Services	29,279	19,291	4,453	2,906	1,682	556	250	91	34	16
55----	Management of Companies and Enterprises	1,921	533	292	305	343	188	131	71	35	23
56----	Admin, Support, Waste Mgt, Remediation Services	13,822	7,835	2,174	1,481	1,199	567	386	123	37	20
61----	Educational Services	3,112	1,287	499	392	488	226	111	37	37	35
62----	Health Care and Social Assistance	33,419	14,264	8,271	5,290	3,278	1,006	856	258	94	102
71----	Arts, Entertainment and Recreation	4,664	2,603	721	562	449	206	82	28	10	3
72----	Accommodation and Food Services	25,749	11,213	4,540	4,005	4,066	1,461	412	43	8	1
81----	Other Services (except public administration)	36,183	22,394	8,036	3,580	1,626	378	142	25	1	1
99----	Unclassified Establishments	1,198	1,133	46	13	5	1	0	0	0	0

The Retail Trade industry is Pennsylvania's top industry in terms of total business establishments; the industry reached 47,430 business establishments in 2004. The Other Services (except public administration) and Health Care and Social Assistance industries followed, with 36,183 and 33,419 business establishments, respectively. Pennsylvania business establishments employing 1-4 people totaled 156,139 – representing 51.7% of the state's total establishments. This Other Services (except public administration) industry dominated this category, with 22,394 establishments employing 1-4 people, followed by the Retail Trade industry, with 20,254 establishments employing 1-4 people. The Professional, Scientific and Technical industry also had a high number of business establishments employing 1-4 people (19,291). In 2004, Pennsylvania's Forestry, Fishing, Hunting and Agriculture Support industry lost 222 business establishments, which is quite significant for such a small industry.

2005 BUSINESS PATTERNS

Luzerne County

2005 Luzerne County Business Patterns					
Code	Industry Code Description	# of Employees for week including March 12	1st Quarter Payroll (\$1,000)	Annual Payroll (\$1,000)	Total Establishments
-----	Total	125,643	847,295	3,663,914	7,790
11----	Forestry, Fishing, Hunting, and Agriculture Support	0-19	D	D	1
21----	Mining	271	2,663	11,012	18
22----	Utilities	1,052	14,775	63,585	25
23----	Construction	5,248	41,854	213,242	710
31----	Manufacturing	18,936	169,542	707,854	347
42----	Wholesale Trade	6,198	53,677	230,340	354
44----	Retail Trade	19,293	89,883	383,049	1,350
48----	Transportation and Warehousing	6,864	41,934	191,880	252
51----	Information	4,012	38,393	153,294	139
52----	Finance and Insurance	5,004	55,908	225,834	470
53----	Real Estate and Rental and Leasing	1,610	10,100	45,801	229
54----	Professional, Scientific and Technical Services	4,987	41,006	173,085	618
55----	Management of Companies and Enterprises	1,724	21,655	84,197	47
56----	Admin, Support, Waste Mgt, Remediation Services	7,126	33,432	160,636	376
61----	Educational Services	3,921	19,298	80,451	73
62----	Health Care and Social Assistance	22,284	162,249	715,874	1,036
71----	Arts, Entertainment and Recreation	1,871	4,854	24,100	96
72----	Accommodation and Food Services	10,682	26,532	114,980	756
81----	Other Services (except public administration)	4,533	19,432	84,489	883
99----	Unclassified Establishments	20-99	D	D	10

In 2005, Luzerne County experienced a slight drop in its number of paid employees. The county recorded 125,643 employees with an average annual payroll of \$3.6 billion and 7,790 business establishments. The Health Care and Social Assistance industry had the highest number of paid employees (22,284), and this industry surpassed the Manufacturing industry for the highest annual payroll at \$715.8 million Or \$44.6 million more than the prior year. The Manufacturing industry experienced a drop in employees to 18,936, but an increase in annual payroll to \$707.8 million.

2005 Luzerne County Number of Establishments by Employment-size class											
Code	Industry Code Description	Total Estb.	1-4	5-9	10-19	20-49	50-99	100-249	250-499	500-999	1000 or more
-----	Total	7,790	4,074	1,558	1,017	674	234	173	40	14	6
11----	Forestry, Fishing, Hunting, and Agriculture Support	1	1	0	0	0	0	0	0	0	0
21----	Mining	18	5	4	3	5	1	0	0	0	0
22----	Utilities	25	8	2	6	1	5	2	1	0	0
23----	Construction	710	477	109	56	52	10	6	0	0	0
31----	Manufacturing	347	104	50	49	57	31	42	10	2	2
42----	Wholesale Trade	354	166	64	73	27	13	8	2	1	0
44----	Retail Trade	1,350	605	327	222	125	36	30	5	0	0
48----	Transportation and Warehousing	252	113	37	34	44	14	5	2	2	1
51----	Information	139	58	20	26	17	9	7	1	1	0
52----	Finance and Insurance	470	251	141	49	19	5	3	0	2	0
53----	Real Estate and Rental and Leasing	229	154	42	26	3	2	1	1	0	0
54----	Professional, Scientific and Technical Services	618	415	111	50	23	13	5	1	0	0
55----	Management of Companies and Enterprises	47	17	8	7	4	7	2	2	0	0
56----	Admin, Support, Waste Mgt, Remediation Services	376	200	62	50	31	14	15	4	0	0
61----	Educational Services	73	30	11	8	15	4	2	0	2	1
62----	Health Care and Social Assistance	1,036	469	233	168	94	28	29	9	4	2
71----	Arts, Entertainment and Recreation	96	53	8	16	12	4	1	2	0	0
72----	Accommodation and Food Services	756	353	116	118	122	35	12	0	0	0
81----	Other Services (except public administration)	883	586	213	55	23	3	3	0	0	0
99----	Unclassified Establishments	10	9	0	1	0	0	0	0	0	0

In 2005, Luzerne County's Retail Trade industry included 1,350 total business establishments, which was about the same as the prior year. The Health Care and Social Assistance industry had the county's second highest number of business establishments. In 2005, the number of business establishments employing 1-4 workers did not change much from 2004. There was, however, a slight increase to six business establishments employing 1,000 or more people; these establishments were dominated the Manufacturing, Health Care and Social Assistance, Transportation and Warehousing and Educational Services industries.

Lackawanna County

2005 Lackawanna County Business Patterns					
Code	Industry Code Description	# of Employees for week including March 12	1st Quarter Payroll (\$1,000)	Annual Payroll (\$1,000)	Total Establishments
-----	Total	93,372	622,364	2,679,681	5,452
11----	Forestry, Fishing, Hunting, and Agriculture Support	8	29	106	4
21----	Mining	68	443	3,144	9
22----	Utilities	250-499	D	D	9
23----	Construction	2,643	19,649	107,043	505
31----	Manufacturing	11,763	98,284	417,366	257
42----	Wholesale Trade	4,646	44,791	187,857	261
44----	Retail Trade	13,819	59,008	254,530	973
48----	Transportation and Warehousing	3,313	24,830	108,862	147
51----	Information	2,116	16,740	67,066	74
52----	Finance and Insurance	7,093	79,744	277,011	331
53----	Real Estate and Rental and Leasing	857	4,724	21,926	153
54----	Professional, Scientific and Technical Services	3,474	31,790	151,904	480
55----	Management of Companies and Enterprises	1,669	15,419	64,124	30
56----	Admin, Support, Waste Mgt, Remediation Services	4,914	20,595	98,427	214
61----	Educational Services	5,935	29,355	123,263	54
62----	Health Care and Social Assistance	17,759	133,069	609,195	717
71----	Arts, Entertainment and Recreation	696	2,087	12,611	73
72----	Accommodation and Food Services	8,224	20,366	85,981	536
81----	Other Services (except public administration)	4,066	17,182	71,940	609
99----	Unclassified Establishments	20-99	D	D	16

A number of noteworthy changes occurred in Lackawanna County during 2005. The county recorded 93,372 employees for the year, a decrease of 2,515 employees from 2004; in addition, it experienced a slight increase in annual payroll to over \$2.6 billion. . The Construction, Information, and Transportation and Warehousing industries were among the industries that lost considerable numbers of employees in 2005. Interesting patterns occurred in the Wholesale Trade industry, which incurred an increase in paid employees and a rise in annual payroll from \$156.7 million in 2004 to \$187.8 million in 2005. The most significant patterns occurred in Lackawanna County's three largest industries. The Health Care and Social Assistance industry had 17,759 paid employees who earned an annual payroll of \$609.1 million – a 4% increase over 2004. The Retail Trade industry experienced a drop in its number of employees to 13,819, but recorded a higher annual payroll of \$254.5 million. The Manufacturing industry recorded 11,763 workers – a loss of 1,108 from 2004, and a decrease in annual payroll to \$417.3 million. The Retail Trade industry recorded 13,819 workers with an annual payroll of \$254.5 million.

2005 Lackawanna County Number of Establishments by Employment-size class											
Code	Industry Code Description	Total Estb.	1-4	5-9	10-19	20-49	50-99	100-249	250-499	500-999	1000 or more
-----	Total	5,452	2,829	1,086	701	503	173	112	29	14	5
11----	Forestry, Fishing, Hunting, and Agriculture Support	4	4	0	0	0	0	0	0	0	0
21----	Mining	9	5	1	2	1	0	0	0	0	0
22----	Utilities	9	5	1	1	1	0	1	0	0	0
23----	Construction	505	356	74	42	30	2	1	0	0	0
31----	Manufacturing	257	79	38	38	46	27	21	5	2	1
42----	Wholesale Trade	261	110	56	39	35	13	6	2	0	0
44----	Retail Trade	973	403	258	168	89	34	19	1	1	0
48----	Transportation and Warehousing	147	71	24	23	17	4	6	1	1	0
51----	Information	74	35	13	7	9	3	5	2	0	0
52----	Finance and Insurance	331	167	84	44	17	7	7	1	4	0
53----	Real Estate and Rental and Leasing	153	99	32	15	5	2	0	0	0	0
54----	Professional, Scientific and Technical Services	480	316	82	44	29	5	4	0	0	0
55----	Management of Companies and Enterprises	30	8	4	4	7	1	4	2	0	0
56----	Admin, Support, Waste Mgt, Remediation Services	214	122	30	24	14	14	6	3	1	0
61----	Educational Services	54	15	4	11	14	1	3	2	3	1
62----	Health Care and Social Assistance	717	330	164	97	67	29	17	8	2	3
71----	Arts, Entertainment and Recreation	73	50	4	7	10	2	0	0	0	0
72----	Accommodation and Food Services	536	246	87	77	90	27	8	1	0	0
81----	Other Services (except public administration)	609	395	128	57	22	2	4	1	0	0
99----	Unclassified Establishments	16	13	2	1	0	0	0	0	0	0

While the Retail Trade industry held Lackawanna County's greatest number of business establishments at 973, it actually lost establishments from the prior year. Other industries, such as Health Care and Social Assistance, Accommodation and Food Services, and Other Services (except public administration), witnessed minor increases in business establishments. For 2005, 2,829 of the county's 5,452 total establishments (52%) employed between 1-4 people. While many of the county's industries did not significantly grow or shrink in size in 2005, the Construction and Professional, Scientific, and Technical Services industries experienced remarkable increases. The Construction industry experienced an increase of 16 establishments from 2004. Likewise, the Professional, Scientific, and Technical Services grew by 21 establishments over the prior year. The number of business establishments employing 1,000 or more people remained the same as 2004, with the exception of the Information industry losing one establishment that fell into this range.

Pennsylvania

2005 Pennsylvania Business Patterns					
Code	Industry Code Description	# of Employees for week including March 12	1st Quarter Payroll (\$1,000)	Annual Payroll (\$1,000)	Total Establishments
-----	Total	5,082,630	45,841,397	189,692,284	303,333
11----	Forestry, Fishing, Hunting, and Agriculture Support	2,538	15,162	68,327	563
21----	Mining	17,451	210,291	905,500	882
22----	Utilities	33,510	784,187	2,724,637	709
23----	Construction	242,100	2,368,106	11,463,841	29,828
31----	Manufacturing	663,605	6,918,572	28,643,809	15,624
42----	Wholesale Trade	238,710	2,852,894	11,945,383	15,890
44----	Retail Trade	668,973	3,314,647	14,205,271	47,223
48----	Transportation and Warehousing	195,581	1,493,210	6,288,931	7,779
51----	Information	133,519	1,829,852	6,965,474	5,315
52----	Finance and Insurance	295,538	5,085,501	17,612,704	18,645
53----	Real Estate and Rental and Leasing	69,248	580,950	2,506,857	9,747
54----	Professional, Scientific and Technical Services	304,291	4,268,732	18,452,450	29,777
55----	Management of Companies and Enterprises	133,429	3,265,869	11,785,204	2,042
56----	Admin, Support, Waste Mgt, Remediation Services	295,723	1,705,893	7,639,549	14,136
61----	Educational Services	220,531	1,581,452	6,634,848	3,242
62----	Health Care and Social Assistance	837,643	6,752,230	29,533,070	34,222
71----	Arts, Entertainment and Recreation	74,435	398,439	1,902,342	4,749
72----	Accommodation and Food Services	404,683	1,150,742	5,053,740	26,115
81----	Other Services (except public administration)	250,423	1,262,011	5,349,986	36,305
99----	Unclassified Establishments	699	2,657	10,361	540

In 2005, Pennsylvania had nearly 5.1 million people in its workforce. Although the number of workers was slightly less than the prior year, the state experienced a tremendous increase in annual payroll – to well over \$189 billion. The Health Care and Social Assistance industry recorded the greatest number of employees and the highest annual payroll; this industry recorded 14,819 more employees than in 2004, to total 837,643, an annual payroll of \$29.5 billion. The Manufacturing industry continued its period of employment decline, which dipped to 663,605 employees; regardless, its annual payroll increased slightly to \$28.6 billion. From 2004 to 2005, the number of employees in the Unclassified Establishments industry dropped from 1,523 to 699; more significant was the industry’s dramatic decrease in annual payroll from \$27.8 million to \$10.3 million – a staggering change for such a small industry. . The Retail Trade industry also experienced a loss of 9,263 employees in 2005; however its annual payroll increased to slightly over \$14 billion. The average annual payroll per employee continued to skyrocket for the Management of Companies and Enterprises and the Utilities industries, which reached \$88,325 and \$81,308, respectively.

2005 Pennsylvania Number of Establishments by Employment-size class											
Code	Industry Code Description	Total Estb.	1-4	5-9	10-19	20-49	50-99	100-249	250-499	500-999	1000 or more
-----	Total	303,333	157,916	61,170	39,737	26,891	9,641	5,643	1,451	574	310
11----	Forestry, Fishing, Hunting, and Agriculture Support	563	443	68	35	9	5	3	0	0	0
21----	Mining	882	347	189	146	128	51	13	4	4	0
22----	Utilities	709	253	113	108	95	60	50	16	11	3
23----	Construction	29,828	19,535	5,069	2,809	1,687	447	224	43	10	4
31----	Manufacturing	15,624	4,875	2,695	2,579	2,663	1,307	1,036	305	120	44
42----	Wholesale Trade	15,890	7,740	3,134	2,433	1,705	536	249	67	19	7
44----	Retail Trade	47,223	20,517	11,892	7,777	4,402	1,498	970	147	17	3
48----	Transportation and Warehousing	7,779	4,006	1,180	979	873	381	257	57	33	13
51----	Information	5,315	2,646	913	662	566	263	178	49	29	9
52----	Finance and Insurance	18,645	9,708	4,965	2,272	1,026	307	187	95	55	30
53----	Real Estate and Rental and Leasing	9,747	6,238	1,913	1,006	427	101	48	10	3	1
54----	Professional, Scientific and Technical Services	29,777	19,712	4,495	2,926	1,702	548	257	87	37	13
55----	Management of Companies and Enterprises	2,042	643	301	304	349	191	129	67	37	21
56----	Admin, Support, Waste Mgt, Remediation Services	14,136	8,200	2,124	1,456	1,179	570	410	130	46	21
61----	Educational Services	3,242	1,354	479	446	507	235	112	37	36	36
62----	Health Care and Social Assistance	34,222	14,712	8,282	5,501	3,326	1,063	887	254	97	100
71----	Arts, Entertainment and Recreation	4,749	2,614	784	560	468	202	86	23	10	2
72----	Accommodation and Food Services	26,115	11,505	4,416	4,127	4,122	1,490	407	38	8	2
81----	Other Services (except public administration)	36,305	22,356	8,139	3,603	1,656	386	140	22	2	1
99----	Unclassified Establishments	540	512	19	8	1	0	0	0	0	0

In 2005, Pennsylvania experienced an increase of 1,776 business establishments, which reached a total of 303,333. With 47,223 total establishments, the Retail Trade industry maintained a significant lead over the Other Services (except public administration) industry (36,305) and the Health Care and Social Assistance (34,333) industry. The majority of Pennsylvania industries experienced a slight increase in number of establishments. Of Pennsylvania's 303,333 total business establishments, 157,916 employed 1- people. The number of establishments employing 1,000 or more people remained relatively the same from 2004 to 2005, and was led by the Health Care and Social Assistance industry, one-third of whose establishments fell into this employment category.

2006 BUSINESS PATTERNS

Luzerne County

2006 Luzerne County Business Patterns					
Code	Industry Code Description	# of Employees for week including March 12	1st Quarter Payroll (\$1,000)	Annual Payroll (\$1,000)	Total Establishments
-----	Total	129,972	926,312	3,841,074	7,684
11----	Forestry, Fishing, Hunting, and Agriculture Support	0-19	D	D	1
21----	Mining	252	2,338	11,636	19
22----	Utilities	1,124	19,013	69,997	25
23----	Construction	5,348	43,030	207,667	699
31----	Manufacturing	18,854	182,322	745,872	357
42----	Wholesale Trade	6,229	57,442	231,988	358
44----	Retail Trade	19,039	92,436	382,480	1,279
48----	Transportation and Warehousing	8,680	45,990	203,561	255
51----	Information	3,614	38,797	154,832	150
52----	Finance and Insurance	5,471	65,866	236,047	491
53----	Real Estate and Rental and Leasing	1,591	10,569	47,813	229
54----	Professional, Scientific and Technical Services	5,138	46,025	181,850	594
55----	Management of Companies and Enterprises	2,022	24,381	99,455	47
56----	Admin, Support, Waste Mgt, Remediation Services	8,154	41,920	191,690	392
61----	Educational Services	3,955	21,167	86,620	71
62----	Health Care and Social Assistance	23,506	183,605	767,139	992
71----	Arts, Entertainment and Recreation	1,934	5,554	29,812	94
72----	Accommodation and Food Services	10,680	27,550	116,052	749
81----	Other Services (except public administration)	4,363	18,263	76,334	870
99----	Unclassified Establishments	0-19	D	D	12

Luzerne County experienced a number of significant changes in 2006, when there were 129,972 paid employees – a 4,329 increase over 2005. The first quarter payroll exceeded \$926.3 million and the annual payroll exceeded \$3.8 billion. The Health Care and Social Assistance industry grew in terms of its number of paid employees and annual payroll, which reached 23,506 employees and \$767.1 million, respectively – earning it the top spot for both categories. The Manufacturing industry experienced a decrease in employees to 18,854, but a raise in the annual payroll to nearly \$746 million. The Retail Trade industry actually encountered a drop in employees, annual payroll and total business establishments. In 2006, the Retail Trade industry had 19,039 workers earning \$382.4 million annually working in 1,279 business establishments.

2006 Luzerne County Number of Establishments by Employment-size class											
Code	Industry Code Description	Total Estb.	1-4	5-9	10-19	20-49	50-99	100-249	250-499	500-999	1000 or more
-----	Total	7,684	3,886	1,582	1,030	711	232	176	46	16	5
11----	Forestry, Fishing, Hunting, and Agriculture Support	1	1	0	0	0	0	0	0	0	0
21----	Mining	19	5	6	4	4	0	0	0	0	0
22----	Utilities	25	8	3	5	1	5	2	1	0	0
23----	Construction	699	444	122	64	51	13	5	0	0	0
31----	Manufacturing	357	114	47	53	61	25	40	13	3	1
42----	Wholesale Trade	358	166	68	66	33	13	9	2	1	0
44----	Retail Trade	1,279	543	325	209	132	33	31	6	0	0
48----	Transportation and Warehousing	255	114	38	33	46	13	6	2	2	1
51----	Information	150	70	19	27	16	11	5	1	1	0
52----	Finance and Insurance	491	254	147	57	24	3	3	1	2	0
53----	Real Estate and Rental and Leasing	229	146	53	21	5	3	0	1	0	0
54----	Professional, Scientific and Technical Services	594	391	110	45	30	11	5	2	0	0
55----	Management of Companies and Enterprises	47	14	7	10	4	6	3	3	0	0
56----	Admin, Support, Waste Mgt, Remediation Services	392	211	63	48	38	9	18	4	1	0
61----	Educational Services	71	29	8	12	11	6	2	0	2	1
62----	Health Care and Social Assistance	992	400	237	174	104	27	36	8	4	2
71----	Arts, Entertainment and Recreation	94	51	9	15	9	7	1	2	0	0
72----	Accommodation and Food Services	749	333	125	121	117	45	8	0	0	0
81----	Other Services (except public administration)	870	581	194	66	25	2	2	0	0	0
99----	Unclassified Establishments	12	11	1	0	0	0	0	0	0	0

In 2006, Luzerne County recorded 7,684 total business establishments — a 106 establishment decrease from the prior year. Those business establishments employing 1-4 people numbered 3,886 of 7,684 total business establishments – or about 50.5%. And while the Retail Trade industry had the greatest number of business establishments, just 543 (or 42% of the total) employed 1-4 people. The Other Services (except public administration) industry had 581 of 870 total establishments (or 67% of the total) that employed 1-4 people. Five business establishments employed 1,000 or more people; two were in the Health Care and Social Assistance industry, while the remaining three were in the Manufacturing, Transportation and Warehousing, and Educational Services industries. As detailed in the table above, the three largest employment-size categories comprise just a small part of the whole.

Lackawanna County

2006 Lackawanna County Business Patterns					
Code	Industry Code Description	# of Employees for week including March 12	1st Quarter Payroll (\$1,000)	Annual Payroll (\$1,000)	Total Establishments
-----	Total	96,136	684,073	2,845,236	5,477
11----	Forestry, Fishing, Hunting, and Agriculture Support	5	21	95	3
21----	Mining	100	533	3,508	10
22----	Utilities	395	6,575	24,003	10
23----	Construction	2,784	22,142	117,195	512
31----	Manufacturing	12,684	112,493	456,695	255
42----	Wholesale Trade	4,202	42,562	169,734	259
44----	Retail Trade	14,037	63,414	264,890	964
48----	Transportation and Warehousing	3,413	28,556	127,060	153
51----	Information	2,178	19,741	77,111	77
52----	Finance and Insurance	6,829	89,049	290,391	336
53----	Real Estate and Rental and Leasing	844	5,232	23,250	157
54----	Professional, Scientific and Technical Services	4,014	35,118	174,087	485
55----	Management of Companies and Enterprises	1,363	13,006	53,179	32
56----	Admin, Support, Waste Mgt, Remediation Services	5,172	22,653	103,135	221
61----	Educational Services	6,076	33,235	132,959	57
62----	Health Care and Social Assistance	18,552	145,404	638,693	714
71----	Arts, Entertainment and Recreation	813	2,371	13,158	75
72----	Accommodation and Food Services	8,523	22,654	96,696	538
81----	Other Services (except public administration)	4,137	19,272	79,155	605
99----	Unclassified Establishments	15	42	242	14

In 2006, Lackawanna County experienced significant improvements over 2005. The county recorded 96,136 paid employees – an increase of 2,764 over 2005. The first-quarter payroll increased from \$622.3 million to \$684 million, and the total annual payroll exceeded \$2.8 billion. Almost all of the county's 20 industries experienced worker and annual payroll increases. The Health Care and Social Assistance industry maintained its top positions for number of employees (18,552) and annual payroll (\$638.6 million). The Retail Trade industry recorded 14,037 employees earning \$264.8 million annually, and the Manufacturing industry employed 12,684 people earning \$456.6 million annually – a nearly \$40 million increase over the prior year. In 2006, the Mining and Arts, Entertainment, and Recreation industries also grew. The Mining industry, which had experienced employment declines over several years, experienced an increase in its number of paid employees — from 68 to 100; in addition, the industry experienced an 11% increase in total payroll, which exceeded \$3.5 million for the year. The Arts, Entertainment, and Recreation industry also experienced a jump in employees from 696 to 813.

2006 Lackawanna County Number of Establishments by Employment-size class											
Code	Industry Code Description	Total Estb.	1-4	5-9	10-19	20-49	50-99	100-249	250-499	500-999	1000 or more
-----	Total	5,477	2,782	1,123	679	553	173	117	32	12	6
11----	Forestry, Fishing, Hunting, and Agriculture Support	3	3	0	0	0	0	0	0	0	0
21----	Mining	10	4	3	1	2	0	0	0	0	0
22----	Utilities	10	4	0	3	1	1	1	0	0	0
23----	Construction	512	356	78	44	31	3	0	0	0	0
31----	Manufacturing	255	71	38	35	49	31	22	6	2	1
42----	Wholesale Trade	259	109	56	38	37	12	6	1	0	0
44----	Retail Trade	964	393	259	157	99	33	20	2	1	0
48----	Transportation and Warehousing	153	78	24	23	17	5	3	2	1	0
51----	Information	77	34	14	9	11	2	5	2	0	0
52----	Finance and Insurance	336	161	96	41	20	8	5	2	2	1
53----	Real Estate and Rental and Leasing	157	103	34	15	3	2	0	0	0	0
54----	Professional, Scientific and Technical Services	485	313	83	44	35	3	6	1	0	0
55----	Management of Companies and Enterprises	32	9	4	5	7	3	3	1	0	0
56----	Admin, Support, Waste Mgt, Remediation Services	221	120	34	27	17	12	7	3	1	0
61----	Educational Services	57	19	8	4	13	5	2	2	3	1
62----	Health Care and Social Assistance	714	319	161	98	78	23	22	8	2	3
71----	Arts, Entertainment and Recreation	75	47	6	6	14	1	1	0	0	0
72----	Accommodation and Food Services	538	244	85	73	98	27	10	1	0	0
81----	Other Services (except public administration)	605	382	139	56	21	2	4	1	0	0
99----	Unclassified Establishments	14	13	1	0	0	0	0	0	0	0

Of Lackawanna County's 5,477 business establishments in 2006, 2,782 (50.1%) employed 1-4 people. Overall, the county's various industries remained similar to 2005 statistics. Six business establishments in Lackawanna County employed 1,000 or more people; three were in the Health Care and Social Assistance industry, while the other three were in the Educational Services, Manufacturing and Finance and Insurance industries.

Pennsylvania

2006 Pennsylvania Business Patterns					
Code	Industry Code Description	# of Employees for week including March 12	1st Quarter Payroll (\$1,000)	Annual Payroll (\$1,000)	Total Establishments
-----	Total	5,189,949	49,891,166	200,537,253	304,058
11----	Forestry, Fishing, Hunting, and Agriculture Support	2,679	16,948	71,408	526
21----	Mining	18,290	244,321	1,035,487	945
22----	Utilities	31,475	810,511	2,721,187	679
23----	Construction	257,300	2,669,349	12,214,188	29,701
31----	Manufacturing	663,812	7,464,591	29,913,140	15,430
42----	Wholesale Trade	241,755	3,104,407	12,600,159	15,805
44----	Retail Trade	679,188	3,582,029	14,873,208	46,660
48----	Transportation and Warehousing	208,113	1,689,136	6,899,238	7,958
51----	Information	129,718	1,966,971	7,242,318	5,396
52----	Finance and Insurance	306,427	5,644,337	18,997,048	19,551
53----	Real Estate and Rental and Leasing	69,069	620,612	2,596,404	9,867
54----	Professional, Scientific and Technical Services	316,047	4,702,923	19,624,584	29,942
55----	Management of Companies and Enterprises	129,545	3,424,994	12,246,576	2,069
56----	Admin, Support, Waste Mgt, Remediation Services	306,181	1,903,301	8,205,328	14,346
61----	Educational Services	231,686	1,712,769	7,106,606	3,268
62----	Health Care and Social Assistance	860,829	7,317,005	31,205,707	34,707
71----	Arts, Entertainment and Recreation	77,828	428,632	2,042,618	4,678
72----	Accommodation and Food Services	411,031	1,254,407	5,419,937	26,218
81----	Other Services (except public administration)	248,483	1,332,013	5,511,081	35,801
99----	Unclassified Establishments	493	1,910	11,031	511

In 2006, the Commonwealth of Pennsylvania experienced more than a 5% increase in annual payroll, which reached \$200.5 billion. The state recorded 5.1 million workers employed in 304,058 business establishments — 75 more establishments than 2005. The Health Care and Social Assistance industry remained at the top, with 860,829 paid employees earning over \$31 billion. The Retail Trade industry ranked second for employment level with 679,188 employees. Likewise, the Manufacturing industry had the second highest payroll at \$29.9 billion and the third highest employment rate – with 663,812 workers. The Professional, Scientific and Technological Services industry had the third highest payroll at \$19.6 billion. The majority of Pennsylvania’s industries grew in terms of employment numbers, with the exception of the Utilities, Information, Real Estate and Retail and Leasing, and Management of Companies and Enterprises industries. The Unclassified Establishments industry plummeted to 493. The Retail Trade industry continued to have the greatest number of business establishments at 46,660, which was a decline from the prior year. The Forestry, Fishing, Hunting and Agriculture Support and Unclassified Establishments industries recorded the fewest number of business establishments.

2006 Pennsylvania Number of Establishments by Employment-size class											
Code	Industry Code Description	Total Estb.	1-4	5-9	10-19	20-49	50-99	100-249	250-499	500-999	1000 or more
-----	Total	304,058	155,666	61,752	40,787	27,974	9,769	5,738	1,483	582	307
11----	Forestry, Fishing, Hunting, and Agriculture Support	526	407	71	26	15	3	3	1	0	0
21----	Mining	945	393	186	166	127	49	17	2	5	0
22----	Utilities	679	230	113	109	96	55	50	15	8	3
23----	Construction	29,701	19,166	5,032	2,915	1,796	474	257	45	8	8
31----	Manufacturing	15,430	4,780	2,675	2,540	2,629	1,311	1,036	298	116	45
42----	Wholesale Trade	15,805	7,577	3,153	2,469	1,698	567	246	73	16	6
44----	Retail Trade	46,660	19,927	11,727	7,760	4,585	1,474	1,003	160	22	2
48----	Transportation and Warehousing	7,958	4,101	1,200	969	912	407	258	57	39	15
51----	Information	5,396	2,680	935	680	578	252	187	53	24	7
52----	Finance and Insurance	19,551	10,185	5,034	2,476	1,148	329	199	94	55	31
53----	Real Estate and Rental and Leasing	9,867	6,261	2,009	1,008	424	109	40	14	2	0
54----	Professional, Scientific and Technical Services	29,942	19,568	4,552	3,013	1,847	552	275	82	40	13
55----	Management of Companies and Enterprises	2,069	642	312	316	347	189	139	69	37	18
56----	Admin, Support, Waste Mgt, Remediation Services	14,346	8,040	2,287	1,557	1,254	599	398	146	50	15
61----	Educational Services	3,268	1,248	541	466	540	251	112	34	37	39
62----	Health Care and Social Assistance	34,707	14,492	8,537	5,718	3,506	1,084	911	257	102	100
71----	Arts, Entertainment and Recreation	4,678	2,509	754	579	496	209	95	23	10	3
72----	Accommodation and Food Services	26,218	11,093	4,574	4,333	4,332	1,461	378	38	8	1
81----	Other Services (except public administration)	35,801	21,881	8,036	3,686	1,644	394	134	22	3	1
99----	Unclassified Establishments	511	486	24	1	0	0	0	0	0	0

Of Pennsylvania's total business establishments, 155,666 (51.2%) employed 1-4 people. With 21,881 business establishments that employed 1-4 people, the Other Services (except public administration) industry lead this category. The Retail Trade industry ranked second with 19,927 establishments that employed 1-4 people. Pennsylvania included 307 business establishments with 1,000 or more employees; such establishments largely fell into the Health Care and Social Assistance industry (100). In terms of employment count, those establishments employing 250-499, 500-99 and 1,000 or more people together comprised just 0.8% of all business establishments, while 85% of all business establishments had fewer than 20 employees.

2007 BUSINESS PATTERNS

Luzerne County

2007 Luzerne County Business Patterns					
Code	Industry Code Description	# of Employees for week including March 12	1st Quarter Payroll (\$1,000)	Annual Payroll (\$1,000)	Total Establishments
-----	Total	128,627	1,040,253	4,211,296	7,705
11----	Forestry, Fishing, Hunting, and Agriculture Support	0-19	D	D	2
21----	Mining	283	2,831	12,537	18
22----	Utilities	1,949	51,593	167,306	26
23----	Construction	5,339	44,777	234,630	701
31----	Manufacturing	18,196	176,805	735,433	350
42----	Wholesale Trade	6,146	59,148	243,435	361
44----	Retail Trade	19,129	97,865	410,527	1,282
48----	Transportation and Warehousing	6,540	48,936	213,433	276
51----	Information	3,896	47,284	174,950	149
52----	Finance and Insurance	4,899	63,290	238,211	489
53----	Real Estate and Rental and Leasing	1,782	12,668	86,105	224
54----	Professional, Scientific and Technical Services	5,019	45,180	192,095	607
55----	Management of Companies and Enterprises	2,474	70,237	155,239	53
56----	Admin, Support, Waste Mgt, Remediation Services	8,426	43,874	193,867	399
61----	Educational Services	3,803	22,308	95,106	72
62----	Health Care and Social Assistance	23,113	195,994	815,414	991
71----	Arts, Entertainment and Recreation	2,260	8,973	40,318	95
72----	Accommodation and Food Services	11,052	30,130	128,465	766
81----	Other Services (except public administration)	4,309	18,333	74,128	841
99----	Unclassified Establishments	0-19	18	58	3

In 2007, Luzerne County experienced a minor decrease in overall number of paid employees, which fell to 128,627. However, with a first quarter payroll of more than \$1 billion and an annual payroll over \$4.2 billion, significant growth occurred from year to year. The Health Care and Social Assistance industry had the most paid employees – 23,113 earning \$815.4 million annually. The Manufacturing industry had 18,196 employees who earned \$735.4 million annually, which was an increase over its 2006 figure. The Retail Trade industry experienced an increase in both paid employees (19,129) and annual payroll (\$410,527), while the Finance and Insurance and Management of Companies and Enterprises industries experienced increases in number of paid employees. Again, when looking at the annual payroll to employees ratio, the Utilities industry paid the highest average annual salary per employee - over \$85,000; this was nearly 2.6 times Luzerne County's average annual payroll per employee.

2007 Luzerne County Number of Establishments by Employment-size class											
Code	Industry Code Description	Total Estb.	1-4	5-9	10-19	20-49	50-99	100-249	250-499	500-999	1000 or more
-----	Total	7,705	3,928	1,545	1,054	690	239	177	51	16	5
11----	Forestry, Fishing, Hunting, and Agriculture Support	2	2	0	0	0	0	0	0	0	0
21----	Mining	18	5	2	4	6	1	0	0	0	0
22----	Utilities	26	9	3	5	0	6	2	0	0	1
23----	Construction	701	458	110	65	50	12	6	0	0	0
31----	Manufacturing	350	100	59	57	55	25	36	14	3	1
42----	Wholesale Trade	361	160	82	61	35	14	7	1	1	0
44----	Retail Trade	1,282	542	313	232	117	44	29	5	0	0
48----	Transportation and Warehousing	276	124	41	35	48	16	7	3	2	0
51----	Information	149	67	20	29	14	10	6	2	1	0
52----	Finance and Insurance	489	269	140	49	21	4	4	0	2	0
53----	Real Estate and Rental and Leasing	224	147	45	23	5	2	0	2	0	0
54----	Professional, Scientific and Technical Services	607	406	95	60	28	11	5	2	0	0
55----	Management of Companies and Enterprises	53	21	7	6	7	4	4	4	0	0
56----	Admin, Support, Waste Mgt, Remediation Services	399	212	65	47	36	14	17	7	1	0
61----	Educational Services	72	29	13	9	12	4	2	0	2	1
62----	Health Care and Social Assistance	991	434	216	166	94	28	38	10	3	2
71----	Arts, Entertainment and Recreation	95	45	17	13	13	4	1	1	1	0
72----	Accommodation and Food Services	766	341	123	130	125	36	11	0	0	0
81----	Other Services (except public administration)	841	555	193	63	24	4	2	0	0	0
99----	Unclassified Establishments	3	2	1	0	0	0	0	0	0	0

Of Luzerne County's 7,705 business establishments, approximately 16.6% fell into the Retail Trade industry. The Health Care and Social Assistance and Other Services (except public administration) industries recorded the second and third greatest number of business establishments. A significant number of business establishments also fell into the Accommodation and Food Services industry. The county included just five business establishments employing 1,000 or more people, two of which were in Health Care and Social Assistance industry, and three of which fell into the Manufacturing, Educational Services and (for the first time) Utilities industries.

Lackawanna County

2007 Lackawanna County Business Patterns					
Code	Industry Code Description	# of Employees for week including March 12	1st Quarter Payroll (\$1,000)	Annual Payroll (\$1,000)	Total Establishments
-----	Total	97,959	711,164	2,963,459	5,554
11----	Forestry, Fishing, Hunting, and Agriculture Support	0-19	D	D	3
21----	Mining	20-99	D	D	9
22----	Utilities	250-499	D	D	9
23----	Construction	3,025	25,556	131,162	516
31----	Manufacturing	12,736	106,894	444,215	265
42----	Wholesale Trade	4,501	45,584	180,238	278
44----	Retail Trade	14,499	68,106	287,098	990
48----	Transportation and Warehousing	3,709	31,023	128,595	162
51----	Information	2,272	20,491	88,745	74
52----	Finance and Insurance	6,306	86,493	287,050	347
53----	Real Estate and Rental and Leasing	823	5,162	22,250	161
54----	Professional, Scientific and Technical Services	3,880	35,747	171,964	479
55----	Management of Companies and Enterprises	1,994	17,027	72,564	33
56----	Admin, Support, Waste Mgt, Remediation Services	4,937	25,156	110,890	232
61----	Educational Services	6,085	31,999	137,199	60
62----	Health Care and Social Assistance	18,705	157,775	675,739	720
71----	Arts, Entertainment and Recreation	1,197	3,478	15,121	79
72----	Accommodation and Food Services	8,714	23,735	100,991	547
81----	Other Services (except public administration)	4,033	19,164	79,752	586
99----	Unclassified Establishments	25	57	168	4

In 2007, Lackawanna County recorded 97,959 paid employees in 5,554 business establishments. The county's total annual payroll exceeded \$2.9 billion. The Health Care and Social Assistance industry had the county's highest employment rate and the highest annual payroll; the industry's 18,705 workers earned more than \$675.7 million annually. The Retail Trade industry followed with 14,499 employees who earned the third highest annual payroll of more than \$287 million. The Manufacturing industry had the second highest payroll of more than \$444.2 million; 12,736 employees worked in this industry.

2007 Lackawanna County Number of Establishments by Employment-size class											
Code	Industry Code Description	Total Estb.	1-4	5-9	10-19	20-49	50-99	100-249	250-499	500-999	1000 or more
-----	Total	5,554	2,791	1,163	693	541	192	123	35	10	6
11----	Forestry, Fishing, Hunting, and Agriculture Support	3	3	0	0	0	0	0	0	0	0
21----	Mining	9	4	0	4	1	0	0	0	0	0
22----	Utilities	9	4	0	2	0	2	1	0	0	0
23----	Construction	516	355	75	53	28	3	2	0	0	0
31----	Manufacturing	265	76	41	44	43	30	21	7	2	1
42----	Wholesale Trade	278	119	58	43	36	14	7	1	0	0
44----	Retail Trade	990	420	248	159	108	32	21	1	1	0
48----	Transportation and Warehousing	162	78	29	24	17	6	5	2	1	0
51----	Information	74	34	9	12	9	3	5	2	0	0
52----	Finance and Insurance	347	175	111	29	14	7	5	3	2	1
53----	Real Estate and Rental and Leasing	161	107	40	8	4	2	0	0	0	0
54----	Professional, Scientific and Technical Services	479	304	89	45	31	4	4	2	0	0
55----	Management of Companies and Enterprises	33	7	2	5	8	5	4	2	0	0
56----	Admin, Support, Waste Mgt, Remediation Services	232	122	40	18	21	15	15	1	0	0
61----	Educational Services	60	15	10	7	16	4	2	2	3	1
62----	Health Care and Social Assistance	720	304	171	108	76	29	19	9	1	3
71----	Arts, Entertainment and Recreation	79	55	4	5	10	3	1	1	0	0
72----	Accommodation and Food Services	547	237	92	81	100	29	7	1	0	0
81----	Other Services (except public administration)	586	370	144	44	19	4	4	1	0	0
99----	Unclassified Establishments	4	2	0	2	0	0	0	0	0	0

In 2007, Lackawanna County's Retail Trade industry had 990 business establishments, keeping it at the top of this category for the tenth and final year examined. The Forestry, Fishing, Hunting and Agriculture Support and Unclassified Establishments industries had the lowest number of business establishments. In Lackawanna County, 2,791 business establishments (or more than half of the total establishments) employed 1-4 people. Six Lackawanna County business establishments employed 1,000 or more people, and were in the Manufacturing, Finance and Insurance, Educational Services, and Health Care and Social Assistance industries.

Pennsylvania

2007 Pennsylvania Business Patterns					
Code	Industry Code Description	# of Employees for week including March 12	1st Quarter Payroll (\$1,000)	Annual Payroll (\$1,000)	Total Establishments
-----	Total	5,195,818	52,015,971	208,045,992	305,345
11----	Forestry, Fishing, Hunting, and Agriculture Support	2,912	18,431	77,421	537
21----	Mining	21,074	275,431	1,123,568	938
22----	Utilities	29,594	858,083	2,863,466	629
23----	Construction	258,832	2,753,758	12,871,706	29,753
31----	Manufacturing	644,994	7,247,553	29,452,822	15,381
42----	Wholesale Trade	236,913	3,202,432	12,819,995	15,875
44----	Retail Trade	682,414	3,698,158	15,290,618	46,328
48----	Transportation and Warehousing	206,207	1,775,624	7,322,330	8,103
51----	Information	133,994	2,154,872	7,683,952	5,366
52----	Finance and Insurance	287,928	5,618,076	18,700,733	19,238
53----	Real Estate and Rental and Leasing	70,935	656,389	2,754,802	9,844
54----	Professional, Scientific and Technical Services	320,169	4,860,627	20,303,193	30,417
55----	Management of Companies and Enterprises	140,905	4,034,656	13,796,449	2,091
56----	Admin, Support, Waste Mgt, Remediation Services	296,085	1,934,809	8,388,316	14,525
61----	Educational Services	233,126	1,818,000	7,514,440	3,448
62----	Health Care and Social Assistance	882,034	7,912,913	33,511,282	35,243
71----	Arts, Entertainment and Recreation	77,573	497,820	2,176,430	4,682
72----	Accommodation and Food Services	420,025	1,311,997	5,645,391	26,815
81----	Other Services (except public administration)	249,864	1,385,694	5,746,152	35,949
99----	Unclassified Establishments	240	648	2,926	183

In 2007, Pennsylvania had 305,345 total business establishments, which employed over five million workers. The state's annual payroll skyrocketed to \$208 billion from \$200.5 billion in the prior year. The state's largest number of employees (882,034) were in the Health Care and Social Assistance industry. Next, the Retail Trade industry employed 682,414 workers, and the Manufacturing industry employed 644,994. The Health Care and Social Assistance and Manufacturing industries had the highest annual payrolls for 2007, at \$33.5 billion and \$29.4 billion, respectively. As of 2007, the Management of Companies and Enterprises industry had an average annual payroll of over \$97,000 per employee, while the Utilities industry had an average annual payroll of more than \$96,000; the Utilities industry marked a \$10,000 increase in average annual payroll from the prior year.

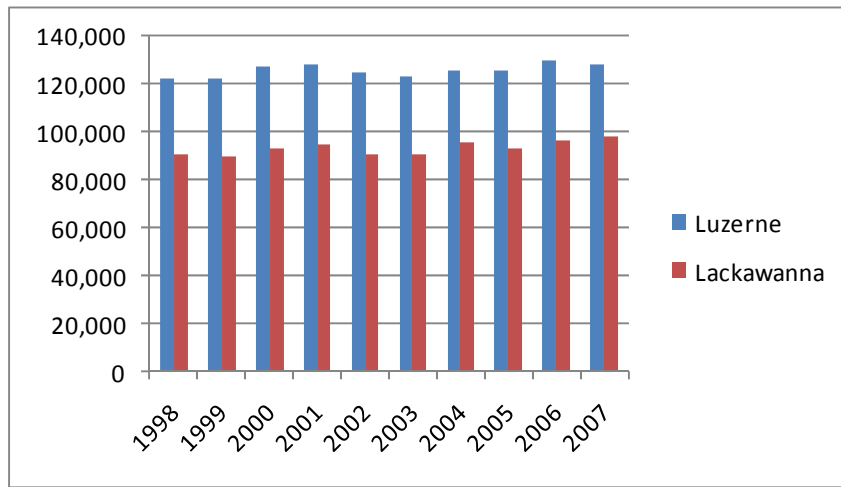
2007 Pennsylvania Number of Establishments by Employment-size class											
Code	Industry Code Description	Total Estb.	1-4	5-9	10-19	20-49	50-99	100-249	250-499	500-999	1000 or more
-----	Total	305,345	156,420	62,164	40,728	28,137	9,823	5,717	1,462	594	300
11----	Forestry, Fishing, Hunting, and Agriculture Support	537	427	60	26	15	5	3	1	0	0
21----	Mining	938	393	170	150	134	54	26	6	4	1
22----	Utilities	629	201	91	108	90	73	44	10	10	2
23----	Construction	29,753	19,349	5,084	2,794	1,725	498	239	49	8	7
31----	Manufacturing	15,381	4,743	2,747	2,513	2,643	1,273	1,002	307	116	37
42----	Wholesale Trade	15,875	7,656	3,215	2,429	1,691	559	242	59	18	6
44----	Retail Trade	46,328	19,772	11,556	7,645	4,757	1,412	1,018	150	16	2
48----	Transportation and Warehousing	8,103	4,179	1,200	996	928	422	264	59	42	13
51----	Information	5,366	2,663	896	705	590	246	183	50	24	9
52----	Finance and Insurance	19,238	10,337	5,040	2,243	975	290	179	86	58	30
53----	Real Estate and Rental and Leasing	9,844	6,277	2,068	911	419	108	40	15	5	1
54----	Professional, Scientific and Technical Services	30,417	19,813	4,653	3,093	1,872	573	279	78	42	14
55----	Management of Companies and Enterprises	2,091	689	291	310	324	200	138	82	38	19
56----	Admin, Support, Waste Mgt, Remediation Services	14,525	8,235	2,260	1,533	1,265	593	441	138	46	14
61----	Educational Services	3,448	1,362	565	482	559	264	99	39	42	36
62----	Health Care and Social Assistance	35,243	14,524	8,612	6,013	3,564	1,146	910	264	106	104
71----	Arts, Entertainment and Recreation	4,682	2,572	755	548	467	212	92	24	9	3
72----	Accommodation and Food Services	26,815	11,089	4,784	4,521	4,506	1,508	374	24	8	1
81----	Other Services (except public administration)	35,949	21,968	8,108	3,706	1,612	387	144	21	2	1
99----	Unclassified Establishments	183	171	9	2	1	0	0	0	0	0

Pennsylvania's Retail Trade industry included the most business establishments at 46,328 – a slight drop from the prior year. The Other Services (except public administration) industry followed with 35,949 business establishments. The fewest business establishments were in the Forestry, Fishing, Hunting and Agriculture and Unclassified Establishments industries. Of Pennsylvania's total business establishments, 156,420 (51%) employed 1-4 people. The greatest number of business establishments were in the Other Services (except public administration) (21,968) and Professional, Scientific and Technical Services (19,813) industries. There were 300 business establishments that employed 1,000 or more people; such establishments were largely in the Health Care and Social Assistance (104) and Manufacturing (37) industries.

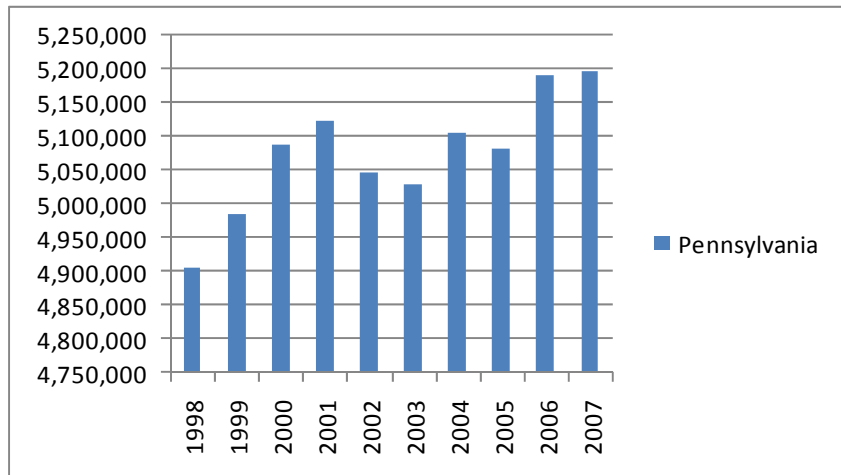
COMPARITIVE ANALYSIS

From 1998 to 2007, Luzerne County, Lackawanna County, and the Commonwealth of Pennsylvania experienced fairly significant increases in number of employees, dramatic annual payroll increases, and a steady climb in total number of business establishments. The following graphs compare the three areas. It should be noted that Luzerne County is double the size of Lackawanna County, and combined, the counties comprise less than 3% of Pennsylvania's total land mass.

Number of Employees in Luzerne and Lackawanna Counties



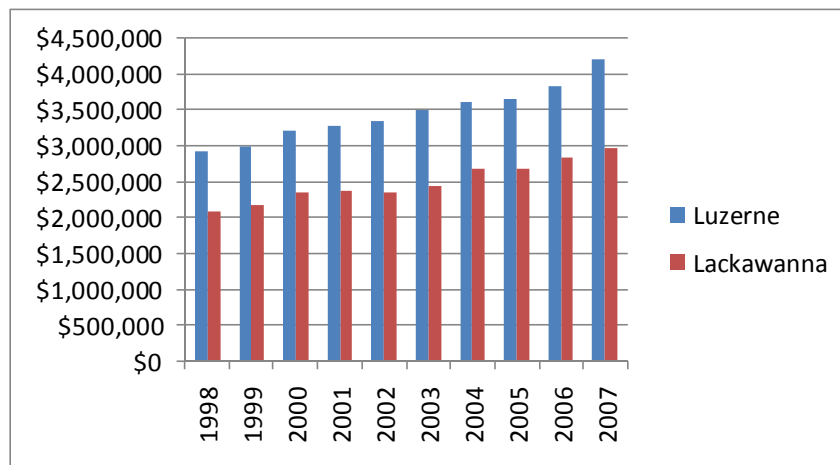
Number of Employees in Pennsylvania



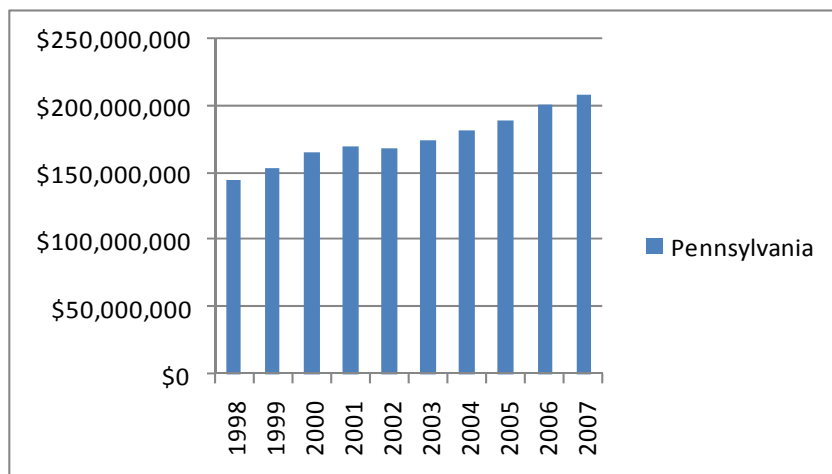
The patterns of growth and decline in number of employees were fairly similar among Luzerne and Lackawanna Counties. Both grew slowly over the ten-year-period, with some fluctuation throughout. The two counties experienced significant employment growth in 2000, 2004 and 2006, and both experienced their greatest employment declines in 2002. Such similarities occurred statewide as well. Employment most significantly increased across Pennsylvania in 1999, 2000, 2004 and 2006. In 2002, 76,000 more people found themselves out of work from the prior year. Lackawanna County experienced the greatest percentage of growth in number of employees of the ten years examined. The county managed to increase employment by 7.87%, compared with 5.9% for Pennsylvania and 5% for Luzerne County.

The top three industries in Lackawanna and Luzerne Counties and Pennsylvania as a whole (although not in the same order) were Manufacturing, Health Care and Social Assistance and Retail Trade. The Commonwealth of Pennsylvania and Luzerne County experienced the exact same trend; the Manufacturing industry employed the most people from 1998-2001, while the Health Care and Social Assistance industry employed the most people from 2002-2007. Also in both areas, the Retail Trade industry surpassed the Manufacturing industry for the second greatest number of employees in 2004. The story was a bit different in Lackawanna County, where the Health Care and Social Assistance industry ranked first for employment in all ten years studied. The Manufacturing industry ranked second for employment from 1998-2001, when it was replaced by the Retail Trade industry from 2002-2007.

Annual Payroll Estimates for Luzerne and Lackawanna Counties



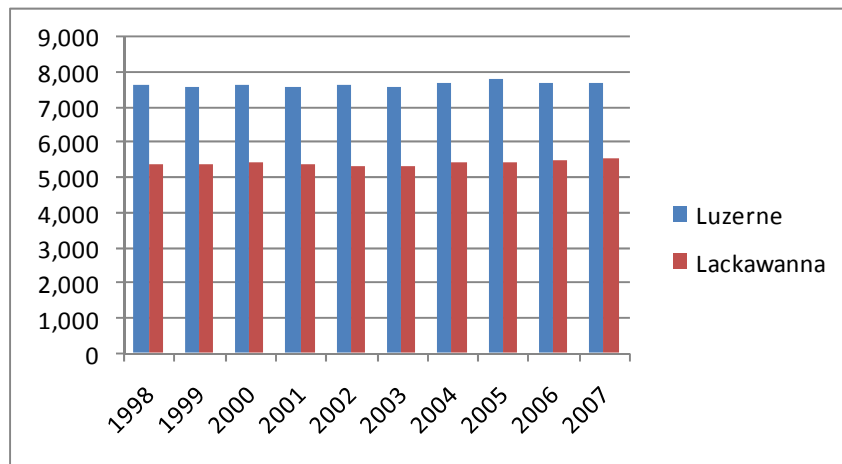
Annual Payroll Estimates for Pennsylvania



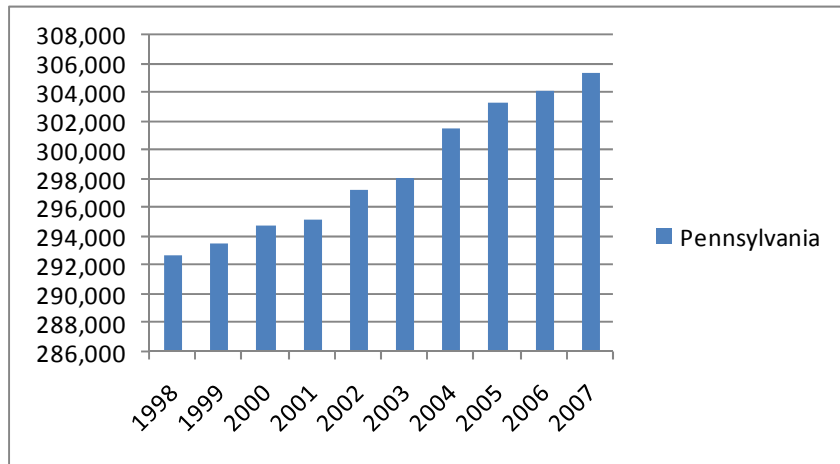
In the ten years examined, annual payroll grew the most. Luzerne County never posted a drop in annual payroll over the ten years examined, while Lackawanna County and Pennsylvania experienced an annual payroll decline from 2001-2002. Luzerne County had the largest percentage increase (44.12%) in annual payroll from 1998-2007, followed by a 42.92% increase for both Lackawanna County and Pennsylvania. In all three regions, the number of employees increased by an average of 6.26%, and payroll increased by an average of 43% over the ten year period. Therefore, there were more workers in the workforce in 2007, and, on average, they were earning much more than at the beginning of the ten-year-period.

During the first four years examined, the Manufacturing industry dominated the top spot for highest annual payroll. This is likely a direct correlation to the Manufacturing industry employing the greatest number of people. In Pennsylvania, the Health Care and Social Assistance industry replaced the Manufacturing industry in 2004 and remained in the top spot for the remainder of the time period examined, while the Professional, Scientific, and Technical Services industry held the third highest payroll for the time period. In Lackawanna County, the Health Care and Social Assistance industry took over two years earlier (in 2002), and the Retail Trade industry ranked third for nine of the ten years examined. In Luzerne County, the Manufacturing industry had the highest annual payroll from 1998-2006, and was topped only in 2007 by the Health Care and Social Assistance industry. Similar to Lackawanna County, the Retail Trade industry ranked third in Luzerne County for annual payroll over all ten years examined.

Number of Establishments in Luzerne and Lackawanna Counties



Number of Establishments in Pennsylvania



Over the ten-year-period, Luzerne County increased its number of business establishments by 0.90%, while Lackawanna County increased its number of business establishments by 2.99. During the period, there were four years when Luzerne County's number of establishments decreased from the prior year, compared with two such years for Lackawanna County. Statewide, there was an increase in the number of business establishments during each year examined. In the end, the state experienced a 4.33% increase in business establishments. It is also noteworthy to mention that, in all three areas, the percentage of establishments with fewer than 50 employees did not change drastically over the ten years examined – hovering around 93-94%. This shows that although more people joined the workforce, the 20-21 major industries remained small employers.

The top three industries for number of establishments were almost identical across the board: the Retail Trade industry included the most business establishments in both counties and statewide; the Health Care and Social Assistance and Other Services (except Public Administration) industries alternated between second and third over the time period examined. Although it was not the case in the two counties, the Other Services (except Public Administration) industry had Pennsylvania's second highest number of business establishments over the ten years examined, followed by the Health Care and Social Assistance industry. In Lackawanna County, the Health Care and Social Assistance industry ranked second in terms of business establishments over the ten years, while the Other Services (except Public Administration) industry ranked third. In Luzerne County, the Other Services (except Public Administration) industry ranked second for number of business establishments in just three years, while the Health Care and Social Assistance industry held that spot for seven years. It is interesting to point that in all three regions over all ten years, the same top three industries accounted for about 40.5% of all business establishments in each year examined.

In the end, Lackawanna County had the greatest percentage increase in the number of employees, Luzerne County had the largest percentage increase in annual payroll, and

Pennsylvania had the greatest percentage increase in number of business establishments. It may be assumed that such increases in employment, payroll, and business establishments are the result of overall growth. The changes were likely signs of expansion in the years to come and for in the development future professions.

CONCLUSION

Luzerne

Luzerne County Business Patterns 1998-2007						
Year	Number of Employees	Change	Annual Payroll	Change	Total Estb.	Change
1998	122,507	-	\$2,922,120,000	-	7,636	-
1999	122,554	47	\$2,998,186,000	\$76,066,000	7,606	-30
2000	127,328	4,774	\$3,203,758,000	\$205,572,000	7,661	55
2001	127,970	642	\$3,286,880,000	\$83,122,000	7,580	-81
2002	124,838	-3,132	\$3,348,498,000	\$61,618,000	7,634	54
2003	123,599	-1,239	\$3,502,182,000	\$153,684,000	7,599	-35
2004	125,682	2,083	\$3,605,352,000	\$103,170,000	7,711	112
2005	125,643	-39	\$3,663,914,000	\$58,562,000	7,790	79
2006	129,972	4,329	\$3,841,074,000	\$177,160,000	7,684	-106
2007	128,627	-1,345	\$4,211,296,000	\$370,222,000	7,705	21
Total Change		6,120		\$1,289,176,000		69
Percent Change		5.00%		44.12%		0.90%

Luzerne County's business patterns over the ten years studied changed in the long run, but did so slowly. In the ten year span, the county's number of employees rose from 122,507 to 128,627 – an increase of 6,120. The county's annual payroll grew consistently throughout the ten years, from just over \$2.9 billion in 1998 to more than \$4.2 billion in 2007; this represented more than a \$1.2 billion growth over ten years. It may be helpful to examine the annual payroll to number of employees ratio. When calculated, in 1998, Luzerne County's industries averaged an annual payroll of \$23,852 per employee. Ten years later, that grew to \$32,740. During the period from 1998-2007 the top three industries with the greatest number of business establishments accounted for about 41% of the all of Luzerne County's business establishments. It is also noteworthy that over the ten year span, about 94% of all of Luzerne County's business establishments employed fewer than 50 people.

The greatest employment increase occurred in the Health Care and Social Assistance industry (2,412). Only six industries decreased their number of employees over the ten years. The county's Manufacturing industry lost 4,800 workers throughout the time period. Likewise, four industries significantly increased their annual payrolls by more than \$100 million, including the Utilities, Retail Trade, Transportation and Warehousing, and Health Care and Social Assistance industries. Three industries increased their number of business establishments by more than 50, including the Health Care and Social Assistance (98), Professional, Scientific, and Technical Services (87) and Transportation and Warehousing (50) industries. The major decreases occurred in the

Other Services (except Public Administration) (86), Retail Trade (110) and Construction (117) industries.

Lackawanna

Lackawanna County Business Patterns 1998-2007						
Year	Number of Employees	Change	Annual Payroll	Change	Total Estb.	Change
1998	90,808	-	\$2,073,488,000	-	5,393	-
1999	89,771	-1,037	\$2,180,815,000	\$107,327,000	5,393	0
2000	93,383	3,612	\$2,356,781,000	\$175,966,000	5,422	29
2001	94,447	1,064	\$2,379,979,000	\$23,198,000	5,397	-25
2002	90,351	-4,096	\$2,358,481,000	-\$21,498,000	5,336	-61
2003	90,855	504	\$2,435,516,000	\$77,035,000	5,336	0
2004	95,887	5,032	\$2,677,704,000	\$242,188,000	5,440	104
2005	93,372	-2,515	\$2,679,681,000	\$1,977,000	5,452	12
2006	96,136	2,764	\$2,845,236,000	\$165,555,000	5,477	25
2007	97,959	1,823	\$2,963,459,000	\$118,223,000	5,554	77
Total Change		7,151		\$889,971,000		161
Percent Change		7.87%		42.92%		2.99%

Lackawanna County experienced trends similar to Luzerne County. The county's total number of employees increased over 7,000 over the time period. Lackawanna County's greatest workforce decline occurred from 2001-2002, when more than 4,000 people became jobless within a year. This drop was offset just a year later, when the county experienced the largest employee growth spurt and more than 5,000 people found work. Lackawanna County's annual payroll also increased significantly. Looking at the annual payroll to employees ratio, in 1998, all the county's industries averaged an annual payroll per employee of \$22,833. Ten years later, that grew to \$30,252. In essence, the number of employees grew 7.87% over the ten years, while annual payroll increased an incredible 42.92%. Lackawanna County experienced a steady five-year growth in business establishments from 2003-2007, and a 161 total business establishment increase over the entire ten years examined. Similar to Luzerne County, Lackawanna County's industries with the greatest number of business establishments accounted for about 42% of all business establishments. Also like Luzerne County, about 94% of all of Lackawanna County's business establishments employed fewer than 50 people.

The Health Care and Social Assistance industry experienced the greatest jump (\$235 million) in annual payroll, while the Professional, Scientific, and Technical Services industry added the greatest number of business establishments (101). The county's Finance and Insurance industry grew significantly in annual payroll, number of business establishments and annual payroll. The Manufacturing industry experienced the lowest annual payroll and number of business establishments, which declined by \$29.5 million 47 establishments, respectively.

Pennsylvania

Commonwealth of Pennsylvania Business Patterns 1998-2007						
Year	Number of Employees	Change	Annual Payroll	Change	Total Estb.	Change
1998	4,906,190	-	\$145,569,019,000	-	292,659	-
1999	4,986,591	80,401	\$154,388,369,000	\$8,819,350,000	293,491	832
2000	5,087,237	100,646	\$165,108,378,000	\$10,720,009,000	294,741	1,250
2001	5,123,111	35,874	\$169,850,265,000	\$4,741,887,000	295,096	355
2002	5,046,442	-76,669	\$169,236,446,000	-\$613,819,000	297,257	2,161
2003	5,029,324	-17,118	\$174,513,098,000	\$5,276,652,000	298,081	824
2004	5,107,044	77,720	\$181,784,478,000	\$7,271,380,000	301,557	3,476
2005	5,082,630	-24,414	\$189,692,284,000	\$7,907,806,000	303,333	1,776
2006	5,189,949	107,319	\$200,537,253,000	\$10,844,969,000	304,058	725
2007	5,195,818	5,869	\$208,045,992,000	\$7,508,739,000	305,345	1,287
Total Change		289,628		\$62,476,973,000		12,686
Percent Change		5.90%		42.92%		4.33%

The Commonwealth of Pennsylvania shared many similarities with Lackawanna and Luzerne Counties. The state's overall number of employees grew. The state experienced a strong increase in the annual payroll.

In terms of number of business establishments, the Retail Trade, Other Services (except Public Administration) and Health Care and Social Assistance industries ranked first, second and third during the entire ten-year span.

The Commonwealth of Pennsylvania increased its number of employees by 289,628, its annual payroll by over \$62 billion, and its total business establishments by 12,686 over the ten-year-period. Five of the state's industries increased their workforces by more than 50,000 workers; the greatest employment increase occurred in the Health Care and Social Assistance (141,701) industry. As in Luzerne and Lackawanna Counties, Pennsylvania's Manufacturing industry experienced an employment loss of nearly 8,000 workers in the ten-year period. Four of the state's industries increased their annual payrolls by more than \$5 billion, while fourteen increased their annual payrolls by more than \$1 billion. The industries with the most payroll growth included: Health Care and Social Assistance (\$12.5 billion increase); Professional, Scientific and Technical Services (\$7.7 billion increase); and Finance and Insurance (\$7.1 billion increase). As for number of business establishments, nine Pennsylvania industries experienced growth exceeding 1,000 new establishments, while four experienced declines of more than 1,000 establishments. The Professional, Scientific and Technical Services industry experienced the most growth in business establishments (increase of 4,910), while the Retail Trade industry experienced the greatest loss (decrease of 3,143).

The state's employment growth and decline patterns were fairly similar for Luzerne and Lackawanna Counties. All regions demonstrated slow growth over the ten-year-period, with some fluctuations throughout.

The top three industries in all three regions (although not in the same order) were Manufacturing, Health Care and Social Assistance, and Retail Trade. The

Commonwealth of Pennsylvania and Luzerne County experienced the exact same trend; the Manufacturing industry employed the most people from 1998-2001, while the Health Care and Social Assistance took the top spot 2002-2007. Also, in 2004, the Retail Trade industry surpassed the Manufacturing industry for the second greatest number of employees. In Lackawanna County, the Health Care and Social Assistance industry ranked first for employment during all ten years; the Manufacturing ranked second from 1998-2001, and the Retail Trade industry moved into second place from 2002-2007.

In the end, Lackawanna County experienced the greatest percent increase in number of employees, Luzerne County had the greatest percent increase in annual payroll, and Pennsylvania had the greatest percent increase in number of business establishments. We can assume that such increases in employment, payroll, and establishments are the result of overall growth in all three regions. For the most part, the changes pointed to signs of expansion in the years to come and for the development of the professions needed in the future.