

The **INSTITUTE** for
 Public Policy & Economic Development
 at Wilkes University

"TURNING INFORMATION INTO INSIGHT"

A collaboration among Geisinger Commonwealth School of Medicine, Keystone College, King's College, Lackawanna College, Luzerne County Community College, Marywood University, Misericordia University, Penn State Scranton, Penn State Wilkes-Barre, Scranton, The Wright Center, University of Scranton, and Wilkes University

Fall
 2017
 Vol. 14
 Issue 1

Save the Date!

Indicators 2018

May 10, 8:30am
 Mohegan Sun Pocono

**Your Chance to
 BE IN THE KNOW!**

A collaboration among Geisinger Commonwealth School of Medicine, Keystone College, King's College, Lackawanna College, Luzerne County Community College, Marywood University, Misericordia University, Penn State Wilkes-Barre, Penn State Scranton, The Wright Center, University of Scranton, & Wilkes University

Indicators Forum 2018

BE IN THE KNOW!
 NEPA's economic and social trends
 and data you need to know!

- Regional Job and Economic Growth
- Transportation & Infrastructure
- Education & Workforce Development
- Healthcare
- Housing
- Demographics

The only event of its kind in NEPA

In This Issue...

- >We welcome Greater Hazleton CAN DO as our new research partner
- >Northeastern PA's economic trends and data you need..
- > Transportation gaps affect region's economy
- >Student poll: Public Policy Issues

A Special Thank You To our Newest Research Partner!



Much sincere thanks to Kevin O'Donnell of Greater Hazleton **CAN DO**. We are so excited to have this wonderful organization as our new research partner. CAN DO's support is helping The Institute continue to support the region's data and research needs. Thank you to Kevin, Joe, and everyone at CAN DO for all you do for Northeastern Pennsylvania!

Institute Releases Northeastern PA's Latest Economic Data & Trends

Fall 2017

The INSTITUTE for
Public Policy & Economic Development
at Wilkes University

Quarterly Economy Tracker

Migration Trends: County to County Population Changes

In This Issue:

- Regional Migration 1-2
- Transportation and Employment 3
- Tourism Statistics 4
- Selected Economic Indicators 5-7
- Labor Market at a Glance 8

Migration Trends: County to County Population Changes

In the summer 2017 edition of The Institute's Quarterly Economy Tracker, data was presented on state to state migration trends. The data showed a net negative migration for the two county region compared with many southeastern states, New England states, Arizona, and Texas. These are the states to which area residents are moving fastest relative to migration into the region from those locations. This provides a way to see how well the region competes with other regions.

In this edition of the QET, data is presented on county to county migration within Pennsylvania. Only migration data to and from the region from other counties within the Commonwealth is presented because in-state migration represents the largest share of total migration both into and out of the region. The map below shows net migration for counties with significant movement of people into and/or out of the two counties. In green are counties with net positive migration, meaning that residents of those counties are moving to the region at a higher rate than leaving Lackawanna and Luzerne to move to those counties. Net negative migration is shown in red, indicating counties.

The highest net negative migration is Centre County, followed by Philadelphia and Lycoming Counties. Philadelphia also has the highest total outbound migration.

(continued on the next page.)

Net Migration To/From Lackawanna & Luzerne County Region

■ Net Negative: -150 or more
■ Net Negative: -50 to -150
■ Net Positive: +150 or more
■ Net Positive: +50 to +150
■ Minimal Net Effect: 00 to +50 (insufficient migration on net data)

Subscribe to the Tracker at www.institutepa.org

In This Issue of the QET...

- Regional economy continues to improve
- Transportation issues affecting economy
- Migration trends by county...
- Fastest growing industries:
Transportation & Warehousing

Access the **Quarterly Economy Tracker** here.

The Institute wants to hear from YOU!

Let us know what is important to you...

What do you see as the region's most pressing challenges?

How can Institute research initiatives help your personal mission?

What would you like to hear at the Indicators event in May?

[Email us Today!](#)



Transportation Issues Impacting Regional Economy

The Institute recently partnered with the Federal Reserve Bank of Philadelphia in a Scranton Area Foundation initiative to address the region's transportation issues. Findings presented at the Equitable Transit Summit show that a lack of transportation options in the region are negatively impacting our economy in several ways:

- As a barrier to employment
- Affects access to healthcare and childcare
- Impedes educational opportunities
- Makes shopping a challenge

Northeastern Pennsylvania's Equitable Transit Study



Institute Polling Program, Fall 2017

The Institute along with our 12 higher education partners conducts a quarterly polling program within our organization. The intent is to poll college and professional students on a variety of topics in order to better understand what our future leaders think is important. Students respond to issues of public policy, government and civic engagement.

Welcome to our Newest Board Members

The Institute would like to extend a warm welcome to **Dr. Linda Thomas-Hemak, President/CEO of The Wright Center**. Dr. Thomas will be replacing Brian Ebersole, formerly Vice President at The Wright Center.

We also warmly welcome **Tara Mugford Wilson, President of Power Engineering Corporation**. Tara will replace Mary Ellen Monacelli.

We would like to thank both Brian and Mary Ellen for their years of service and dedication to The Institute!

The Institute Welcomes Duncan Mayer, MSW, Research Analyst



Duncan recently joined The Institute as a research assistant. As such he is charged with data collection, qualitative research and analysis. Mayer has worked on both community based research studies conducting analysis such as the college student poll and several projects requiring field work such as stakeholder interviews, focus group facilitation and project evaluation.

As a student Duncan completed practicums at Prevention Point Philadelphia, the United Neighborhood Centers of Northeast Pennsylvania, The United Way of Lackawanna and Wayne counties, and at The Institute. While at The Institute he contributed to the annual Indicators report, analysis of survey data, and collaborative grant writing.

Duncan is a graduate of Marywood University in Scranton Pennsylvania with a Bachelor of Science and a Master's degree in Social Work.

Congratulations to Andrew Chew On receiving his AICP Certification!



The Institute congratulates Senior Research and Policy Analyst, Andrew Chew, on receiving his AICP certification.

The American Institute of Certified Planners, is a professional certification given by the American Planning Association to professionals in the urban and regional planning field. Planners with an AICP certification have demonstrated the academic qualifications, relevant work experience, and mastery of essential skills required to serve communities effectively. Certified planners are also committed to a high standard of ethical practice.

Andrew also holds a Master's in City and Regional Planning from the Bloustein School of Planning and Public Policy at Rutgers University. His graduate studies included coursework in community and economic development, urban economics, land use planning, and GIS. He earned a Bachelor's Degree in Political Science from Muhlenberg College.

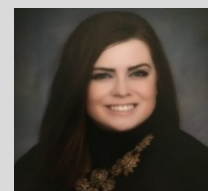
The Institute Wishes You a Healthy and Happy Holiday Season!



Institute Seeking Spring, Summer and Fall, 2018 Student Interns

The Institute is accepting applications for spring, summer and fall, 2018 sessions. Students of all majors may qualify for both academic credit and a stipend of up to \$599.

For more information or to apply, contact Erin McCormick at 570-408-9850 or mccormick@instituteapa.org.



Who We Are

The Institute is a non-profit research organization dedicated to empowering business and community leaders with researched based strategies for informed decision making.

We conduct independent, empirical research to identify the opportunities, issues and challenges unique to our region and offer innovative solutions for the problems facing our communities. This research is funded by our generous academic partners and sponsors who share our vision for a strong regional economy and vibrant communities.

Be in the Know!

Access the latest regional research on the Institute's website. www.institutepa.org

Regional Indicators Data & Research

Indicators data tracks the region's progress over time on the economy, healthcare, environment, education and infrastructure measures.

<http://www.institutepa.org/PDF/Indicators/2017/indicators17.pdf>.

Task Force Research

Recent and archived topical research studies identify and address the region's challenges. This research has been a driving force behind many important economic development and community revitalization initiatives that have produced positive outcomes for our region.

http://www.institutepa.org/Regional_Indicators.htm

Quarterly Economic Tracker

This quarterly electronic publication explores the region's economic and business trends.

<http://www.institutepa.org/PDF/EconomyTracker/qetsp17.pdf>

Polling Program

Better understand what our local college students and future leaders think is important, their perceptions of the region, and interest in civic engagement.

http://institutepa.org/community_research_polls.html

Thank you to our Research Sponsors!

The Institute would like to sincerely thank our generous stakeholders who share our vision for a strong regional economy and healthy communities. Your support makes our work possible!

Signature Underwriters

Andrew J. Sordoni Foundation
Luzerne County
Moses Taylor Foundation
PPL Electric Utilities
Sordoni Family Foundation
The Willary Foundation

Contributing Underwriters

BlackOut Design
Borton-Lawson
Commonwealth Health Systems
Geisinger Health System
Luzerne County Housing Partnership
Mohegan Sun Pocono

Supporting Underwriters

Berkshire Asset Management
Greater Hazleton CANDO
Highmark Blue Cross Blue Shield
NET Credit Union
OneSource Staffing
PNC Foundation
Prudential Retirement Services
Sanofi Pasteur
UGI Utilities
Wells Fargo Foundation

Public Media Partner

WVIA Public Media

Client Solutions

The Institute also offers a wide array of research, consulting and support services to help organizations boost productivity, increase profitability and be successful in their missions.

Economic Development Strategies
Economic Impact Studies
Industry/Workforce/Housing/Education Studies
Strategy Development
Needs Assessments
Policy Analysis

Surveys
Market & Feasibility Studies
Grant/Program Evaluation
Site Selection Research
Strategy Development/Planning
Indicators/Indexes

Locations in:

Scranton and Wilkes-Barre, PA

Mailing Address:

85 South Main Street
Wilkes-Barre, PA 18701

www.institutepa.org

Follow us on Twitter and Facebook



Teri Ooms – Executive Director

ooms@institutepa.org

Andrew Chew – Research Analyst

chew@institutepa.org

Erin McCormick – Research Assistant

mccormick@institutepa.org

Susan Magnotta – Director of Community Outreach

magnotta@institutepa.org

Duncan Mayer – Research Assistant

mayer@institutepa.org

Christopher Ritter – Research Associate

ritter@institutepa.org

Saidat Sanni – Graduate Research Assistant- Statistician

saidat.sanni@wilkes.edu

info@institutepa.org

Advisory Board

Chairman - Patrick Leahy, Ed.D, Wilkes University

Vice-Chairman – Frank Joanlanne, Borton Lawson

Heather Acker — Gentex Corporation

Congressman Lou Barletta

Ron Beer – Geisinger Health System

Thomas Botzman, Ph.D. — Misericordia University

Terry Casey — Chancellor Financial Group

Cornelio Catena — Commonwealth Health Systems

John Cefaly — Cushman & Wakefield

David Coppola, Ph.D. — Keystone College

Thomas Curra — WVIA Public Media

Robert Durkin — Greater Scranton Chamber of Commerce

Linda Thomas-Hemak, M.D. – The Wright Center

Dale Jones, Ph.D. — Penn State University Wilkes-Barre

Charles Kasko — Wyoming Valley Motors

Rev. Herbert Keller, S.J. — University of Scranton

Thomas E. Lawson — Borton-Lawson

Thomas Leary — Luzerne County Community College

Robert Luciani — Prudential Retirement Services

Mary Persico, IHM, Ph.D. — Marywood University

Eugene Roth — Rosenn, Jenkins, & Greenwald

John J. Ryan, C.S.C., Ph.D. — King's College

Steven Scheinman, MD — Geisinger Commonwealth School of Medicine

Bill Sordoni — Sordoni Construction

Matthew Sordoni — Upland Corporation

Marleen Troy, Ph.D., — Wilkes University

Wico van Genderen—Greater Wilkes-Barre Chamber of Business & Industry

Lucyann Vierling — Wayne Pike Workforce Alliance

Mark Volk — Lackawanna College

John T. Yudichak — Pennsylvania State Senate

Marwan Wafa — Penn State University Scranton

Tara Mugford Wilson - Power Engineering Corporation

William B. Sordoni—Emeritus, Founding Member & Officer
Sordoni Construction