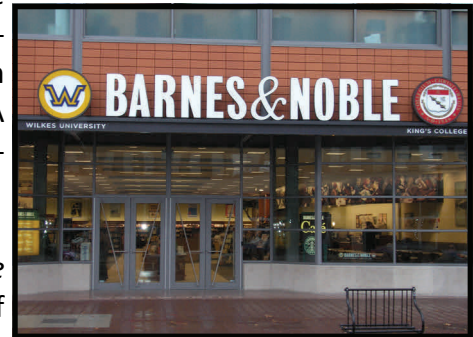


**Downtown Bloomsburg, Inc., - April 2015** Conduct a downtown strategic plan to define a community's vision and identify priority projects to revitalize the Downtown. An examination of existing conditions and data collection and analysis leading to physical land use plan with livability/design guidelines, designs specific redevelopment sites and projects, and identifies sustainable implementation strategies and funding sources for Downtown's future physical improvements, economic uses, and regulations.

**Wyoming County & Wyoming County Chamber of Commerce—May 2014** Preparation of a county-wide economic development strategy for the County as part of their updated Comprehensive Plan and the Chamber's updated strategic plan.

**Carbon County Business Needs Assessment June 2013**—The purpose of the study is to identify resources needs, as determined by the local business community in order to help them to grow and sustain their businesses within Carbon County. A strategic plan to be executed by the county's economic development organization will be developed.



**Forum for Pennsylvania's Heartland Talent Strategy June 2011**— The purpose of this study was to support the mission of the Forum for Pennsylvania's Heartland which is to transform Montour, Columbia, Northumberland, Snyder, and Union Counties through the quality of its workforce through talent attraction. An assessment and corresponding strategic initiatives were developed.

**Borough of Factoryville October 2010** – Preparation of an economic development strategy based upon demographic, economic, and business trends and a market study of the surrounding competitive communities.

**Lackawanna Workforce Investment Board Workforce & Economic Development Assessment October 2009** — An assessment of workforce and economic development implications of Marcellus Shale in northeastern Pennsylvania.

**Central Pennsylvania Regional Economic Development Strategy June 2009** – This study was conducted for a regional consortium serving 11 counties. Assets were mapped in higher education, quality of life, K-12 education, demographics, business and government. Also included was a SWOT

analysis and recommendations.



**Keystone Opportunity Zone (KOZ) Analysis** *May 2009* — A review of the KOZ sites in Luzerne County was conducted for the purpose of presenting the economic impact generated by the business beneficiaries to be used to support renewal and expansion of the KOZ program by the city and school district.

**Wilkes—Barre Business Asset Map** *July 2006* — Mapping of assets in a 10 block radius . Included detailed evaluation of properties, recommendations , and a strategy for a targeted business development program

focusing on retail, hospitality, and entertainment as well as environmental factors conducive to business growth and sustainability. Recommended ordinances were prepared.

**Wilkes-Barre City Economic Development Strategy** *July 2006* – Strategy for a small city in northeastern Pennsylvania that included detailed focus on strategies for improving housing stock that would encourage more people to seek downtown living; and a strategy for creating a college town atmosphere. All aspects of economic development (business attraction, retention, creation an incubation).

**South Valley Regional Economic Development Strategy** *October 2005* — Evaluation of several communities in the Nanticoke region which have undergone declines in population, business attraction and retention, and political turmoil. Strategy provided steps become more inclusive of higher education partners in the community, and steps to improve business attraction and retention and improve quality of place.

**Wyoming County Economic Development Strategy** *October 2014* — An economic development study and plan encompassing all areas of the county’s economy and business environment also including a number of potential strategies to enhance economic development in the county as a part of implementation of the county’s Comprehensive Plan.